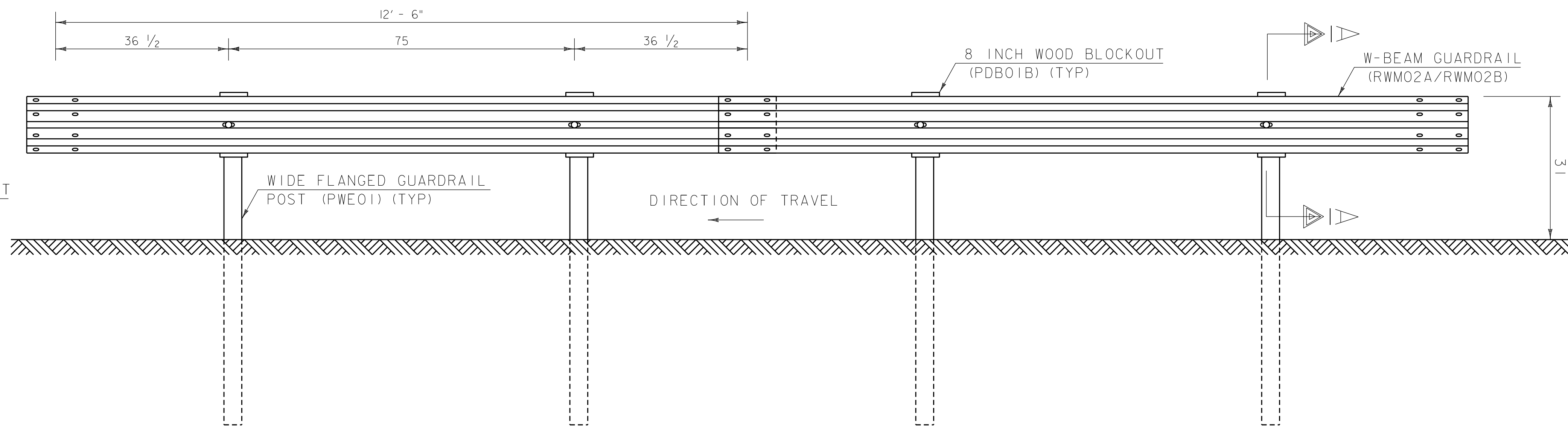
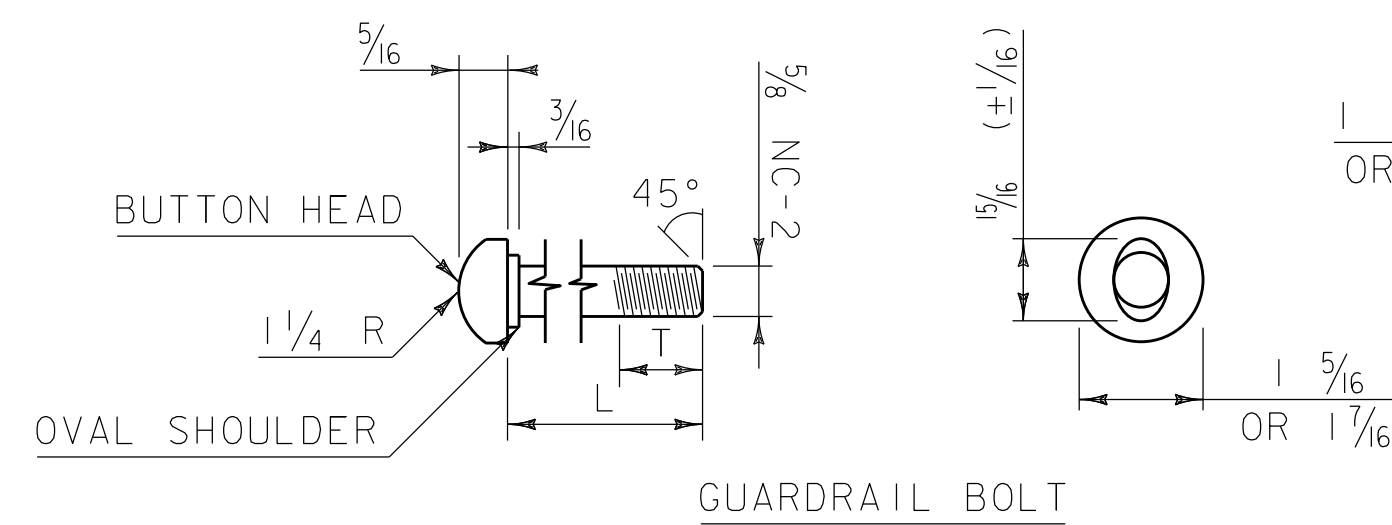


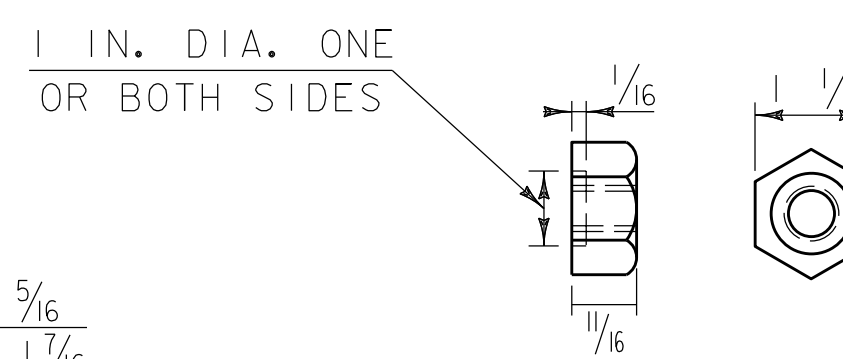
TYPICAL GUARDRAIL DETAIL  
SECTION A-A



GUARDRAIL ELEVATION

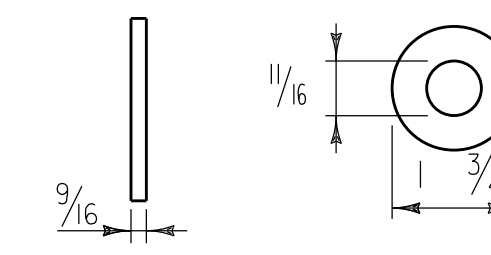


GUARDRAIL BOLT



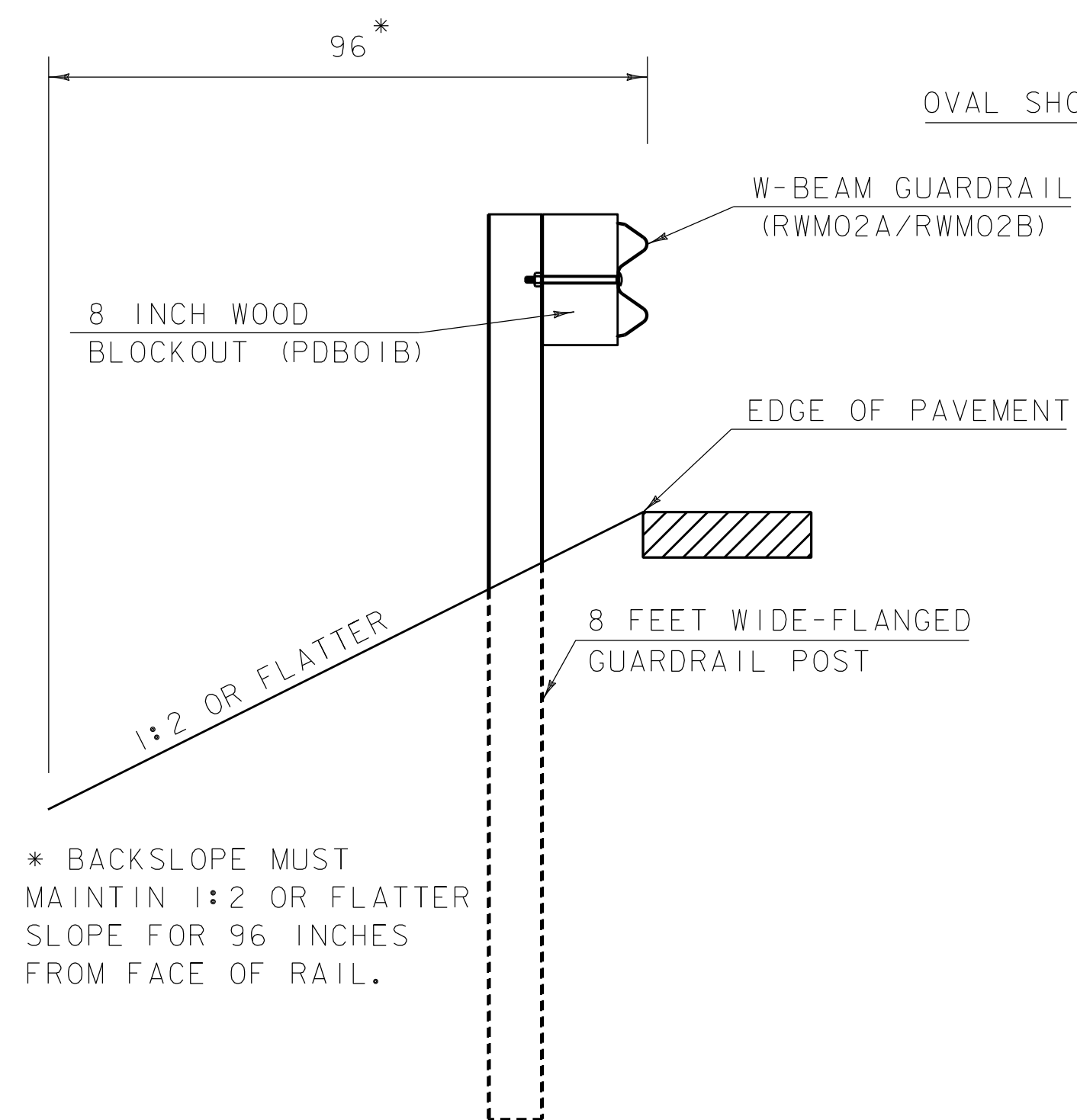
RECESSED NUT FOR GUARDRAIL BOLT

NOTE: WASHER IS USED UNDER RECESSED NUT WHERE GUARDRAIL BOLT IS USED WITH WOOD POSTS.



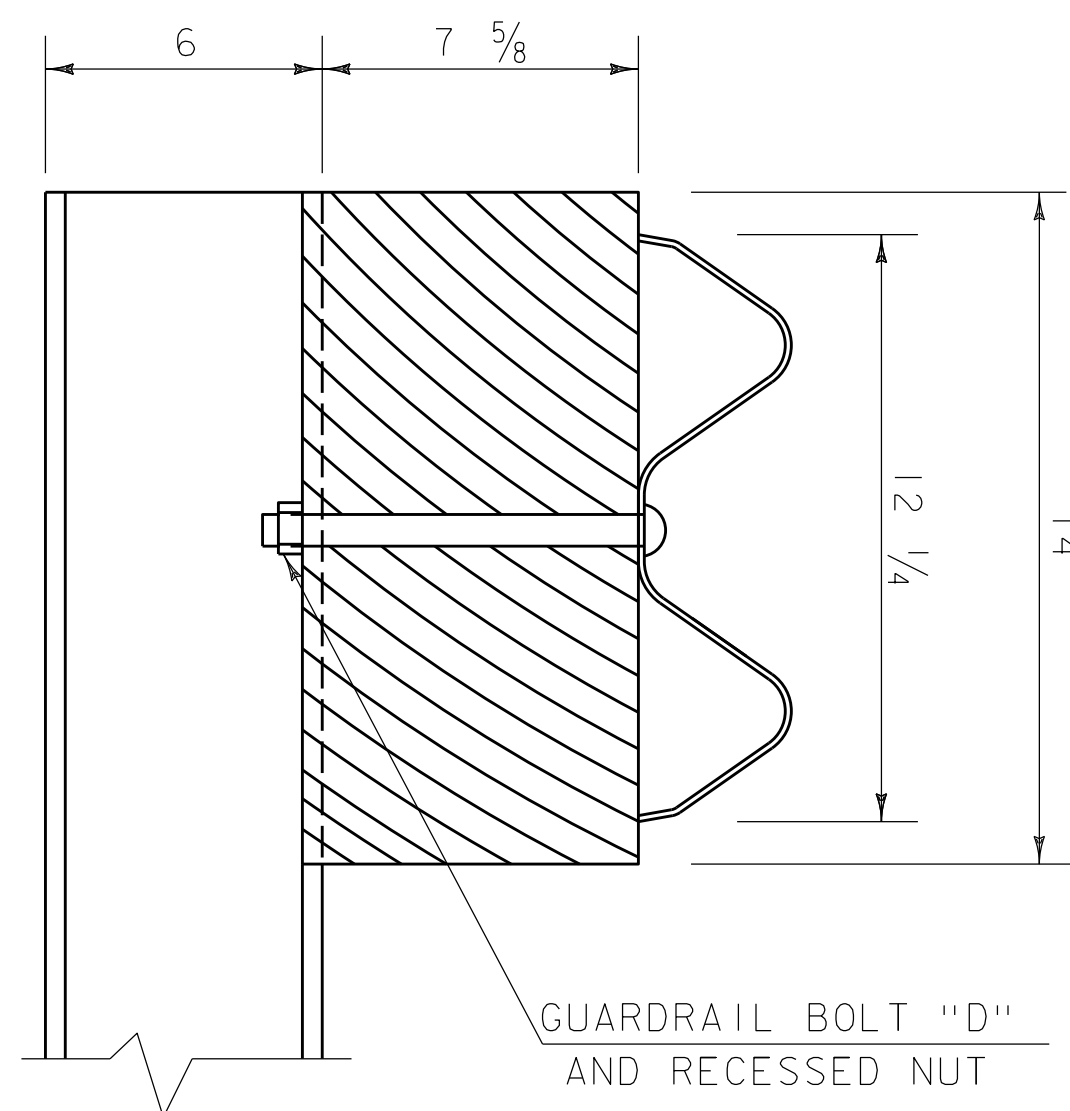
WASHER FOR 5/8" BOLTS  
ARTBA F-13-73

GUARDRAIL BOLTS				FASTENER USED IN	
BOLT DES.	ARTBA REF. NO.	L	T (MIN.)	STEEL POSTS	WOOD POSTS
"A"	F-3[1 1/4]-76	1 1/4"	1"	X	X
"C"	F-3[9 1/2]-76	9 1/2"	1 3/4"	X	
"D"	F-3[18]-76	18"	2 1/2"		X
"F"	F-3[25]-76	25"	2"		X

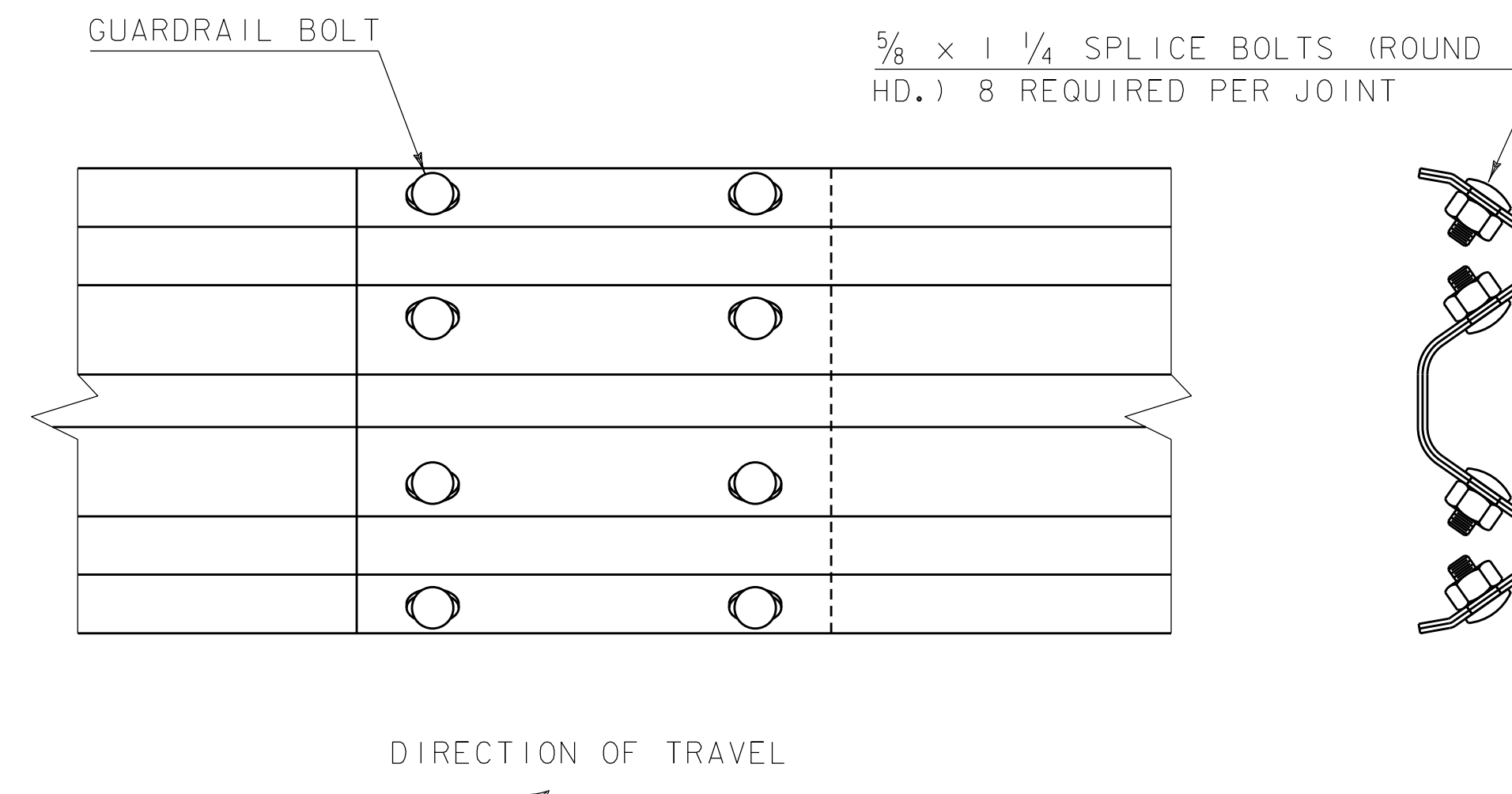


8 FEET POSTS GUARDRAIL DETAIL  
SECTION A-A

\* BACKSLOPE MUST MAINTAIN 1:2 OR FLATTER SLOPE FOR 96 INCHES FROM FACE OF RAIL.



POST ATTACHMENT DETAIL



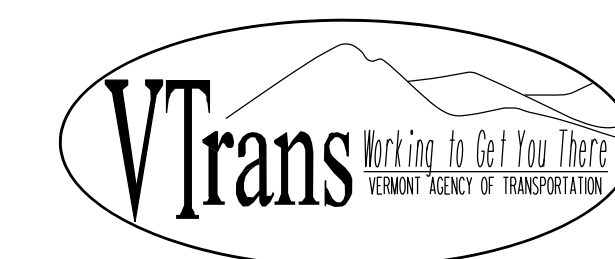
SPLICE DETAIL

GENERAL NOTES

- DESIGNATIONS ARE AS IDENTIFIED IN "A GUIDE TO STANDARDIZED HIGHWAY BARRIER HARDWARE" AS PUBLISHED BY THE "AMERICAN ASSOCIATION OF STATE AND HIGHWAY TRANSPORTATION OFFICIALS" (AASHTO), "ASSOCIATED GENERAL CONTRACTORS OF AMERICA" (AGC) AND THE "AMERICAN ROAD AND TRANSPORTATION BUILDERS ASSOCIATION" (ARTBA).
- MATERIALS SHALL BE IN ACCORDANCE WITH SECTION 728 OF THE CURRENT STANDARD SPECIFICATIONS FOR CONSTRUCTION, AND ITS LATEST REVISIONS, AS APPLICABLE.
- WHEN W-BEAM GUARDRAIL, 8 FEET POSTS IS SPECIFIED ON THE PLANS, WIDE FLANGED GUARDRAIL POST (PWE01) SHALL BE INCREASED FROM 72 INCHES TO 96 INCHES, SEE DETAIL HSD-621.07B.
- THE DYNAMIC DEFLECTION DISTANCE OF 57 INCHES FOR W BEAM GUARDRAIL SHALL BE MAINTAINED CLEAR OF OBSTACLES, TO BE MEASURED FROM THE BACK OF POST.
- FOR TEST LEVEL 3 APPLICATIONS, AS APPROVED IN THE FEDERAL HIGHWAY ADMINISTRATION'S ELIGIBILITY LETTER, HSST/B-240, DATED NOVEMBER 8, 2012.
- ALL DIMENSION IN INCHES, UNLESS OTHERWISE NOTED.

REV.	DATE	DESCRIPTION
--	APR. 17, 2019	ORIGINAL APPROVAL
I	JAN. 4, 2021	CORRECTED REFERENCE IN NOTE 3
OTHER DETAILS REQUIRED:		621.07B
DETAILS APPROVED FOR USE BY HIGHWAY SAFETY & DESIGN		

MIDWEST GUARDRAIL SYSTEM (MGS)



HIGHWAY SAFETY  
& DESIGN DETAIL  
HSD-621.07A