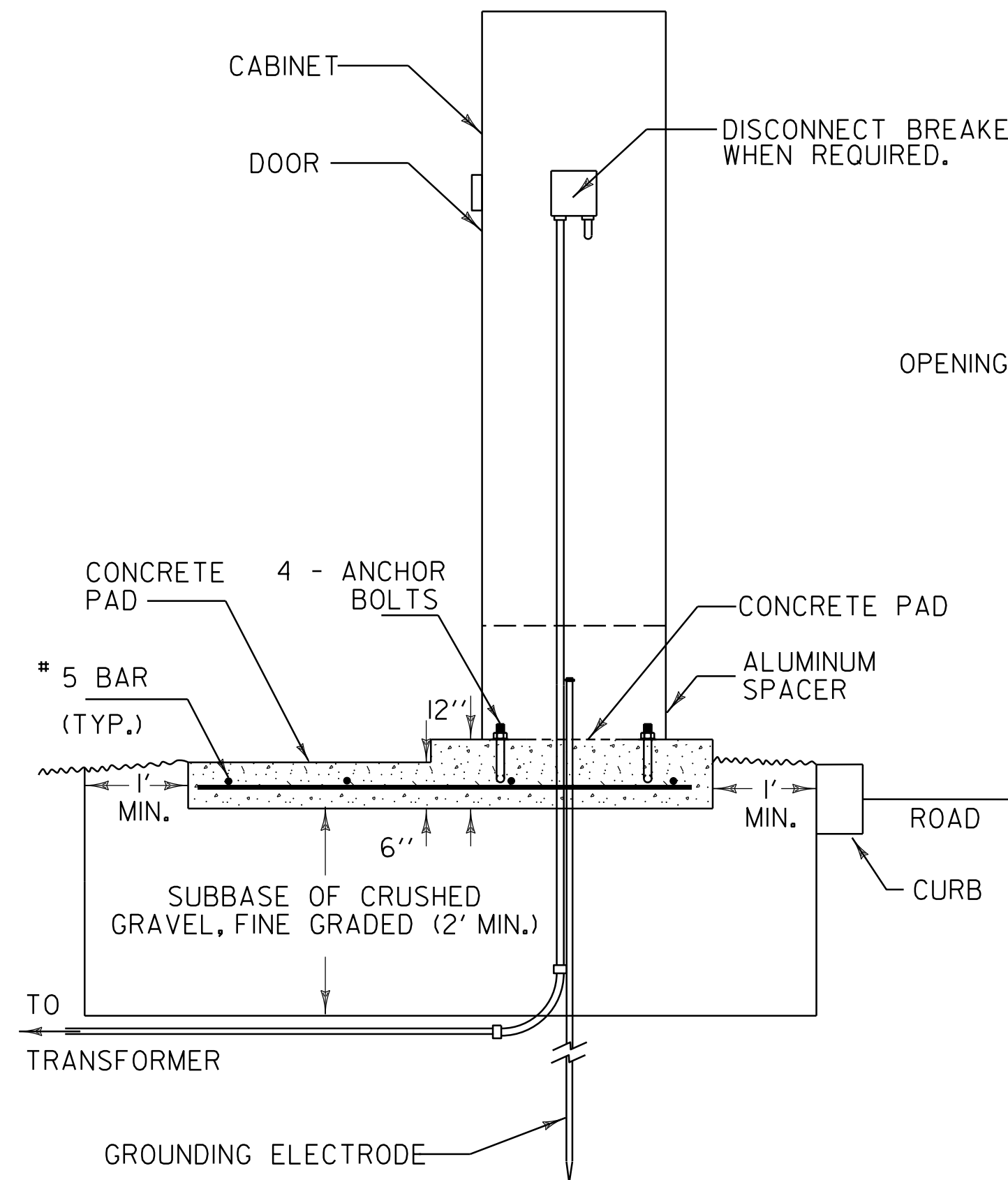
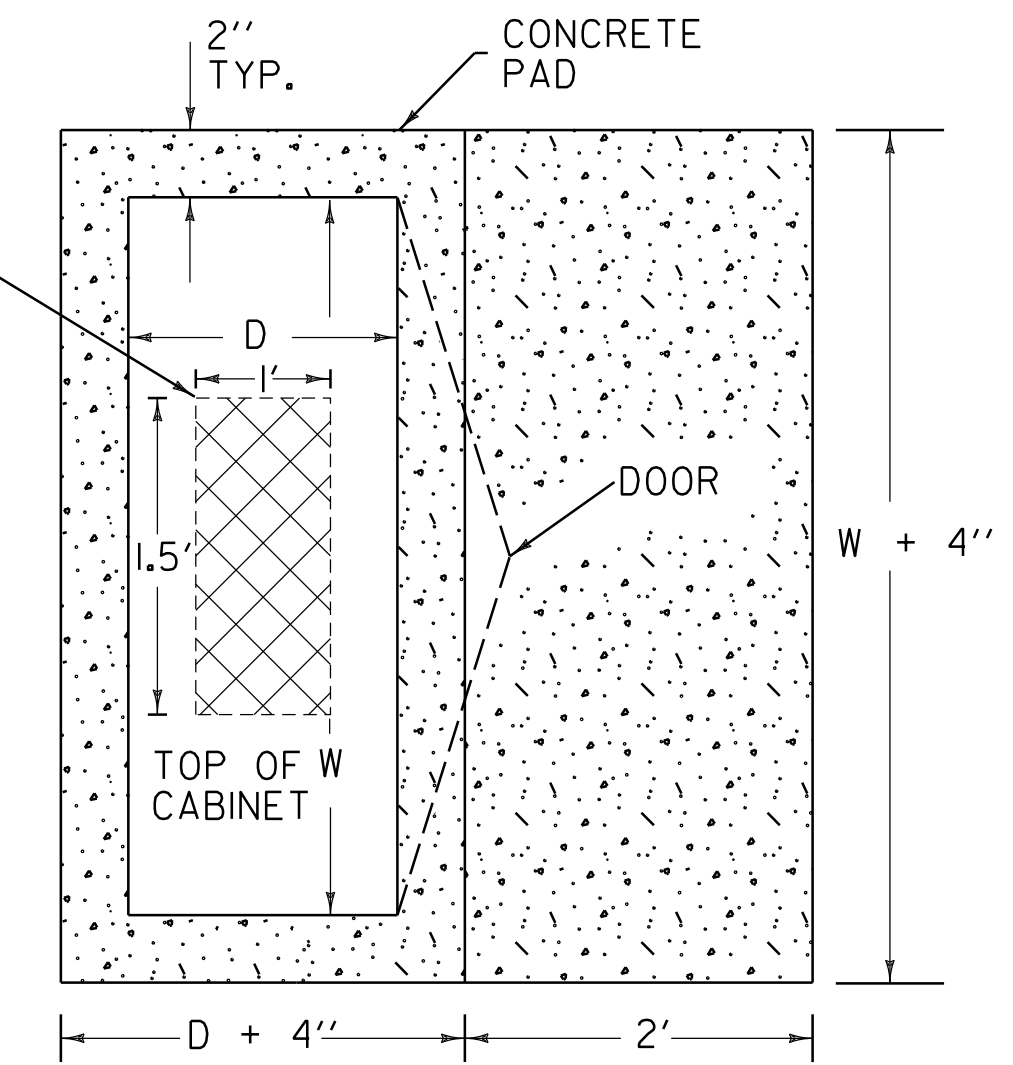


**FRONT VIEW
NOT TO SCALE**



**SIDE VIEW
NOT TO SCALE**



**TOP VIEW
NOT TO SCALE**

THE CABINET DIMENSIONS "D" AND "W" VARY WITH MANUFACTURER. A TYPICAL "P" CABINET HAS DIMENSIONS OF D = 26" AND W = 46".

 CABINET FOUNDATION TO HAVE A 1.5' X 1' OPENING FOR CONDUIT PASS THROUGH.

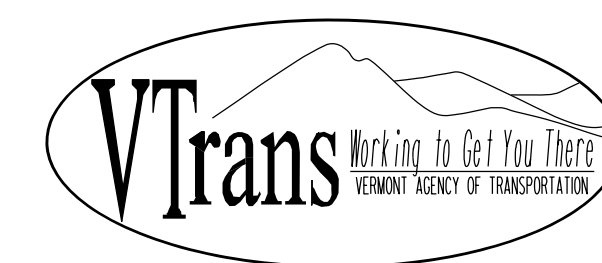
GROUND MOUNTED CONTROLLER CABINET

NOTES:

1. THE CONCRETE PAD SURFACE SHALL HAVE A BRUSHED FINISH.
2. A BOND BREAKER SHALL BE USED BETWEEN THE CONTROLLER PAD AND ADJACENT SIDE-WALK, WHERE APPLICABLE.
3. EXCAVATION AND BACKFILL MATERIAL SHALL BE INCIDENTAL TO THE TRAFFIC CONTROL SIGNAL SYSTEM ITEM.
4. FOR GROUND MOUNTED CABINET INSTALLATIONS:
 - A. REINFORCEMENT SHALL BE SPACED 16" CENTER TO CENTER WITH A MINIMUM OF 3" COVER TO THE GROUND. THEY SHALL RUN BOTH NORMAL AND TRANSVERSE IN THE CONCRETE PAD.
 - B. ANCHOR BOLT SHALL BE GALVANIZED AND OF THE DIMENSIONS SPECIFIED BY THE CABINET MANUFACTURER.
5. CABINET DOOR SHALL FACE AWAY FROM THE ROADWAY.

REV.	DATE	DESCRIPTION
0	DEC. 21, 2022	ORIGINAL APPROVAL
1	MARCH 14, 2024	UPDATE TO THE GROUND MOUNTED CONTROLLER CABINET DETAIL. IN REGARDS TO THE CONDUIT PASS THROUGH.
OTHER DETAILS REQUIRED: DETAILS APPROVED FOR USE BY HIGHWAY SAFETY & DESIGN		

**GROUND MOUNTED
CONTROLLER CABINET**



**HIGHWAY SAFETY
& DESIGN DETAIL
HSD-678.02**