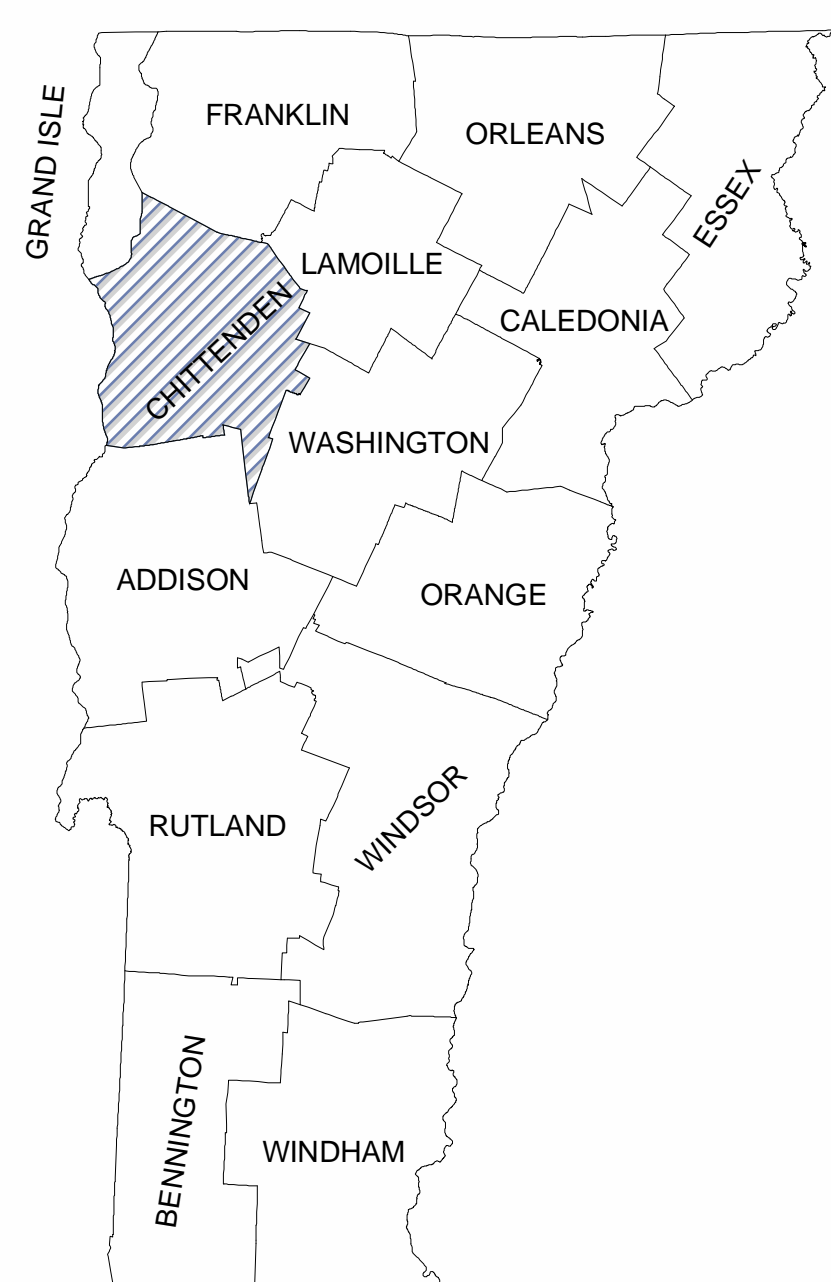
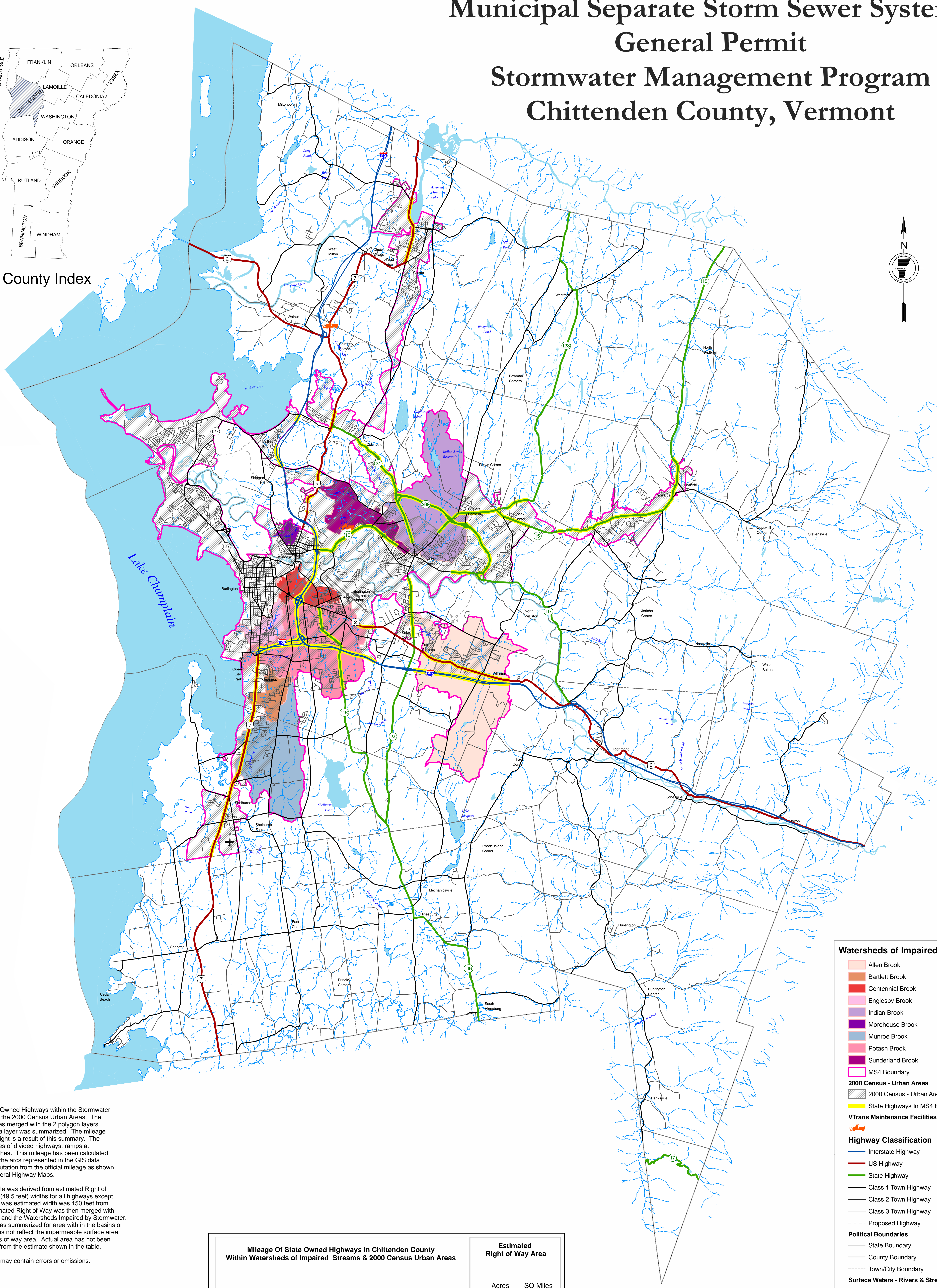
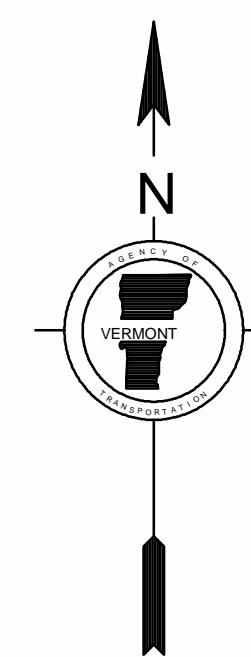


# Municipal Separate Storm Sewer Systems General Permit Stormwater Management Program Chittenden County, Vermont



County Index



**Note:**

This map highlights State Owned Highways within the Stormwater Impaired Watersheds and the 2000 Census Urban Areas. The VTrans RDS data layer was merged with the 2 polygon layers and the resulting road data layer was summarized. The mileage shown in the table to the right is a result of this summary. The mileage includes both lanes of divided highways, ramps at interchanges and approaches. This mileage has been calculated using the actual length of the arcs represented in the GIS data layer as opposed to computation from the official mileage as shown on the Route Logs or General Highway Maps.

The area shown in the table was derived from estimated Right of Way boundaries of 3 Rod (49.5 feet) widths for all highways except the Interstate System that was estimated width was 150 feet from each centerline. This estimated Right of Way was then merged with the Urban Area data layer and the Watersheds Impaired by Stormwater. The resultant data layer was summarized for area within the basins or urban area. This data does not reflect the impermeable surface area, solely an estimate of rights of way area. Actual area has not been calculated and may differ from the estimate shown in the table.

Please note that this map may contain errors or omissions.

**Sources:**

Stormwater Impaired Watersheds - Acquired from ANR DEC  
2000 Census Urban Areas - Acquired from ANR DEC  
Highways - VTrans 1:5,000 RDS data layer  
Maintenance Facilities - VTrans 1:5,000 point data layer  
Airports - VTrans 1:5,000 point data layer  
Surface Water - 1:5,000 VHD from VCGI

Mileage Of State Owned Highways in Chittenden County Within Watersheds of Impaired Streams & 2000 Census Urban Areas		Estimated Right of Way Area	
		Acres	SQ Miles
Area Outside Basins - But Within Urban Area	33.045	261	0.408
Allen Brook- From 1 mile above mouth upstream 5.5 miles	9.494	133	0.208
Bartlett Brook	0.603	4	0.006
Centennial Brook (2 miles)	3.224	59	0.092
Indian Brook- From lake upstream 9.8 miles to Butlers Corners(VT15)	7.119	43	0.067
Munroe Brook	3.389	20	0.031
Potash Brook- From mouth to 5 miles upstream	15.517	240	0.375
Sunderland Brook (6.5 miles)	1.806	11	0.017
Total Mileage of State Owned Highway	74.197	Total 771	1.204

(See Note)

Map Produced by the  
Vermont Agency of Transportation  
Policy & Planning Division  
Mapping Unit

In Cooperation with the  
Vermont Agency of Natural Resources  
Department of Environmental Conservation

**Watersheds of Impaired Streams**

- Allen Brook
- Bartlett Brook
- Centennial Brook
- Englesby Brook
- Indian Brook
- Morehouse Brook
- Munroe Brook
- Potash Brook
- Sunderland Brook
- MS4 Boundary

- 2000 Census - Urban Areas
- 2000 Census - Urban Areas
- State Highways In MS4 Boundary
- VTrans Maintenance Facilities

**Highway Classification**

- Interstate Highway
- US Highway
- State Highway
- Class 1 Town Highway
- Class 2 Town Highway
- Class 3 Town Highway
- Proposed Highway

**Political Boundaries**

- State Boundary
- County Boundary
- Town/City Boundary

**Surface Waters - Rivers & Streams**

- Surface Waters - Rivers & Streams

**Surface Waters - Lakes & Ponds**

- Surface Waters - Lakes & Ponds

**Airports**

- State
- Municipal
- Private

