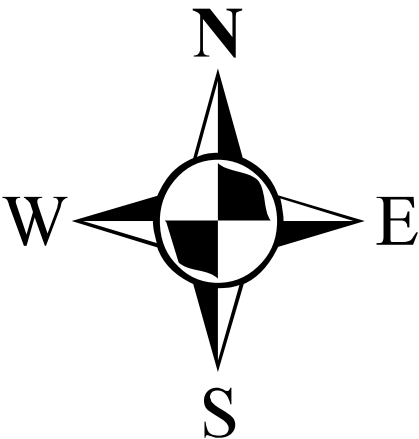
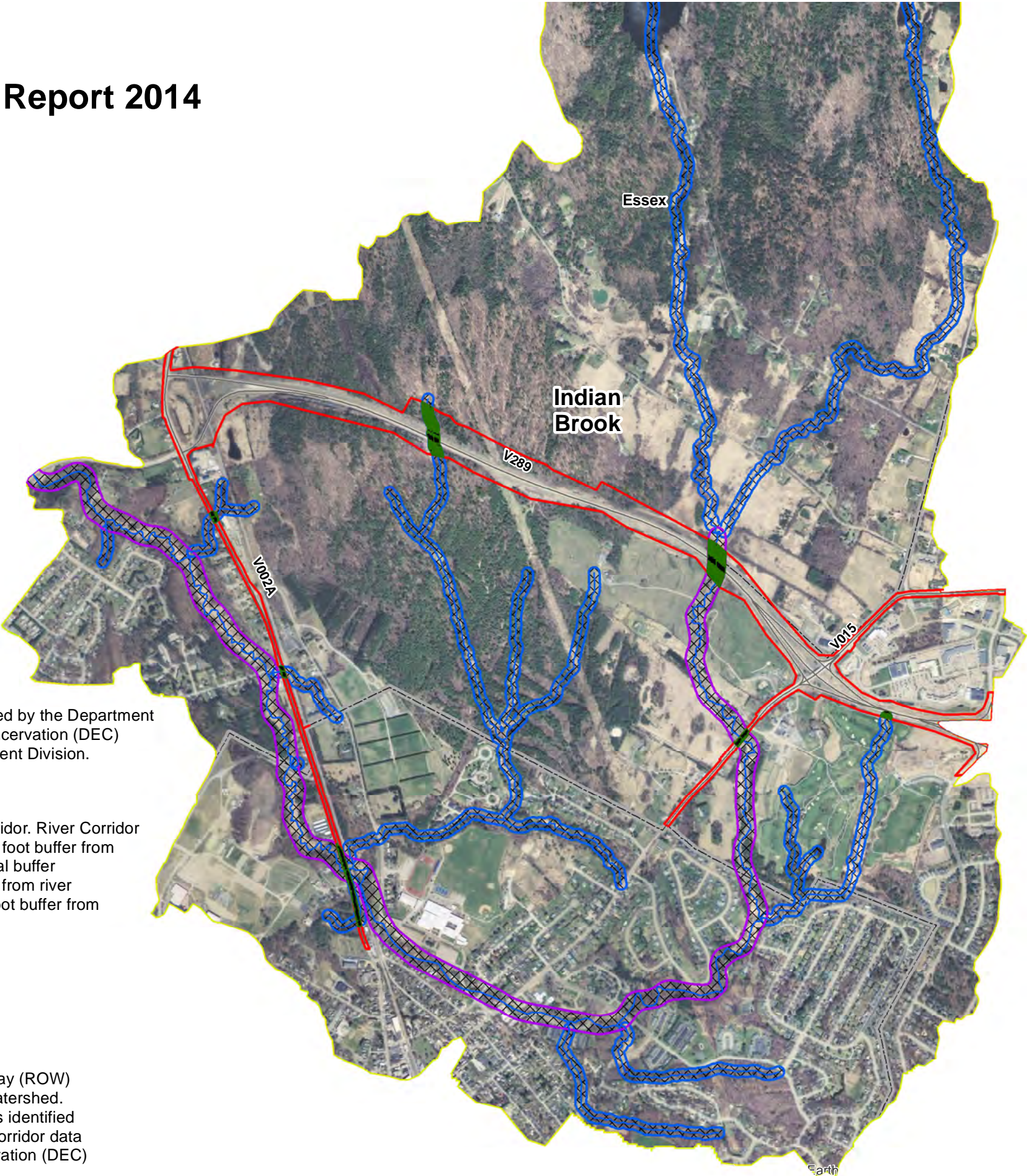


VTrans Stream Corridor Report 2014

Indian Brook



 River Corridor

River Corridor provided by the Department of Environmental Conservation (DEC) Watershed Management Division.

 River Corridor*

Generated River Corridor. River Corridor generated using a 50 foot buffer from waterway (75 foot total buffer using a 25 foot buffer from river centerline and a 50 foot buffer from stream edge).

 River or Stream

 State Route


 Right Of Way (ROW)

 Impervious Area Within River Corridor

 Undeveloped Land Within River Corridor

 River Corridor

 River Corridor*

 Stormwater Impaired Watershed

Map created to show where VTrans owned Right of Way (ROW) is within the river corridor of a stormwater impaired watershed. Furthermore, impervious area and undeveloped land is identified where VTrans ROW is within the river corridor. River corridor data provided by the Department of Environmental Conservation (DEC) Watershed Management Division.

