

# COLCHESTER

## EXIT 17

### PROJECT



#### PROJECT OVERVIEW

The Vermont Agency of Transportation (VTrans) is improving the interchange at Exit 17 and the Chimney Corner intersection of U.S. Route 2 (U.S. 2) and U.S. Route 7 (U.S. 7) to enhance safety and mobility in Colchester, Vermont. This project will:

#### REPLACE

aging and deteriorating infrastructure through the full replacement of the existing U.S. 2 bridge over I-89 to be constructed adjacent to existing bridge

#### EXTEND

the deceleration lane of the I-89 northbound off-ramp

#### IMPROVE

the intersection of the I-89 northbound off-ramp at U.S. 2, including adding a U.S. 2 eastbound left-turn-only lane to increase capacity and reduce queuing and backups on the interstate

#### RECONSTRUCT

the I-89 southbound off-ramp to make space for a new I-89 southbound on-ramp for U.S. 2 westbound

#### ELIMINATE

the left-turn conflict point for westbound vehicles accessing I-89 southbound and reduce queuing and backups on U.S. 2 with a new I-89 southbound on-ramp

#### WIDEN

the roadway to accommodate additional turning lanes on U.S. 2 eastbound and U.S. 7 northbound, to address queuing and delays at the U.S. 2 and U.S. 7 intersection

#### PROJECT QUICK FACTS

- **Contract Award**  
February 22, 2024
- **Target Construction Schedule**  
Spring 2024 through Summer 2026
- **Designer**  
VHB
- **Contractor**  
Kubricky-Jointa Lime LLC
- **Estimated Project Cost**  
\$31,760,442.50
- **Funding**  
100% federal funding from U.S. Department of Transportation Federal Highway Administration's Programs

#### CONSTRUCTION SCHEDULE AND TRAFFIC IMPACTS:

During construction, travelers can expect shoulder and lane closures on U.S. 2 and U.S. 7. The project team will avoid major impacts to traffic on U.S. 2, U.S. 7, and I-89 during peak traffic hours to the extent possible.



#### Daytime work

Monday to Friday, 6 a.m. - 8 p.m.



#### Nighttime work

Sunday to Thursday, 8 p.m. - 6 a.m.

#### Nighttime single-lane closures

I-89 northbound (NB) and southbound (SB) for 5 nights for bridge erection and demolition - *maximum 5 nights of closures in each direction*

#### Nighttime I-89 Exit 17 ramp closures

Traffic will be detoured from I-89 to U.S. 2 and U.S. 7 via Exits 16 and 18, as needed.

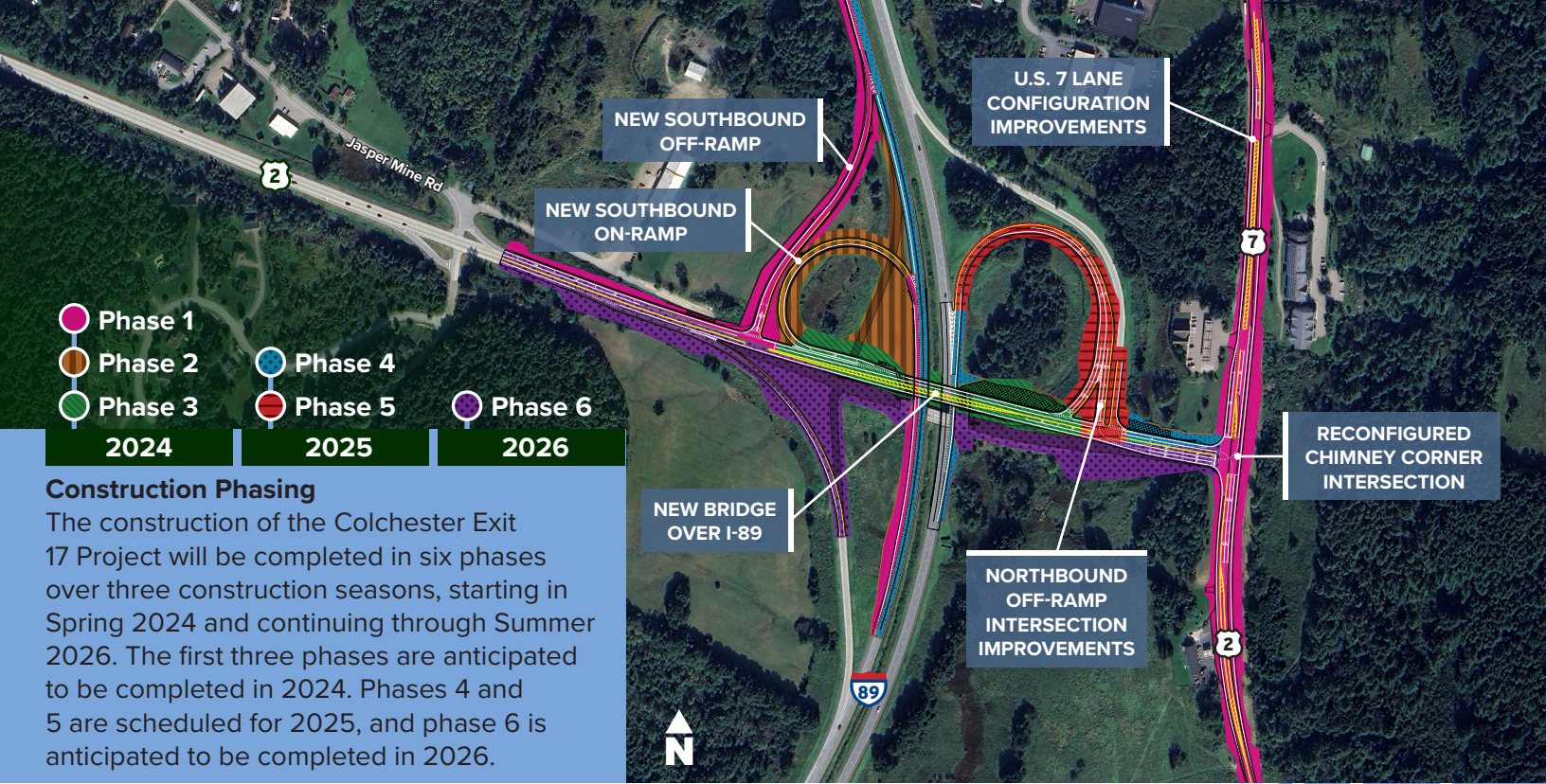
#### PROJECT AREA

The segment of U.S. 2 starting just east of Jasper Mine Road and extending just under a half mile east to its intersection with U.S. 7 at Chimney Corner and the segment of U.S. 7 starting just south of the Shell Gas Station/Simon's Chimney Corner Store and extending just over a half mile north to its intersection with Wiley Road. The Exit 17 interstate ramps and the portion of Interstate 89 (I-89) bounded by them.



Flaggers and uniformed traffic officers will be present to guide travelers safely through the project area.





Phase 1	Phase 4
Phase 2	Phase 5
Phase 3	Phase 6
2024	2025
2024	2026

**Construction Phasing**  
 The construction of the Colchester Exit 17 Project will be completed in six phases over three construction seasons, starting in Spring 2024 and continuing through Summer 2026. The first three phases are anticipated to be completed in 2024. Phases 4 and 5 are scheduled for 2025, and phase 6 is anticipated to be completed in 2026.

**Phase 1: Spring – Late Summer 2024**

**Impacts: Moderate traffic impacts along U.S. 2 and 7. Minimal disruptions to I-89 SB.**

- ➔ Mobilization and preparatory work for the start of construction.
- ➔ Widening on both sides of U.S. 7 within the project limits and of U.S. 2 near the I-89 SB ramps.
- ➔ Construction of the new I-89 SB off-ramp to U.S. 2 and the new deceleration lane from I-89 SB to the new off-ramp.
- ➔ Reconstruction of the acceleration lane from the new I-89 SB on-ramp from U.S. 2 WB.

**Phase 2: Mid-Summer – Mid-Fall 2024**

**Impacts: Moderate traffic impacts along U.S. 2.**

- ➔ Construction of the new gravel wetland along U.S. 2.
- ➔ Removal of the existing I-89 SB off-ramp and construction of the new I-89 SB on-ramp from U.S. 2 WB.

**Phase 3: Mid-Summer – Late Fall 2024**

**Impacts: Construction of the new bridge will occur off the existing alignment, next to the existing bridge, resulting in limited traffic impacts. Moderate traffic impacts at U.S. 2/U.S. 7 intersection.**

- ➔ Construction of portions of the new U.S. 2 bridge over I-89, focusing on the substructure. This work will include pile installation, bridge abutments and piers construction, and geotechnical work.

**Phase 4: Spring – Fall 2025**

**Impacts: Construction of the new bridge will occur off the existing alignment, next to the existing bridge, resulting in limited traffic impacts. Bridge work will require night shutdowns on I-89, limited to 5 days in each direction, with detours. Minimal impacts along I-89 NB and U.S. 2. Moderate traffic impacts at the U.S. 2/U.S. 7 intersection.**

- ➔ Reconstruction of the deceleration lane from I-89 NB to the existing off-ramp.
- ➔ Construction of a portion of the roadway for the realignment of U.S. 2.
- ➔ Continued construction of the new U.S. 2 bridge over I-89, focusing on the superstructure including the concrete deck.
- ➔ Milling and paving of portions of I-89 SB within the project limits.

**Phase 5: Spring – Late Fall 2025**

**Impacts: Moderate impacts to I-89. Nightwork with I-89 northbound ramp closures and detours in April. Minimal impacts on U.S. 2.**

- ➔ Reconstruction of the existing I-89 NB on-ramp from U.S. 2 and the existing I-89 NB off-ramp from I-89 to U.S. 2.
- ➔ Reconstruction of U.S. 2 and the existing I-89 SB on-ramp. Removal of the existing I-89 SB on-ramp from U.S. 2.
- ➔ Install permanent traffic signals at U.S. 2 and the I-89 ramps.
- ➔ Open the new U.S. 2 bridge over I-89 and close the existing bridge.

**Phase 6: Spring – Mid-Summer 2026**

**Impacts: Minimal impacts to U.S. 2. Final paving will take place at night under lane closures. Final bridge work will require night shutdowns on I-89 with detours. Shutdowns are limited to 5 days in each direction.**

- ➔ Demolition and removal of the existing U.S. 2 bridge over I-89.
- ➔ Final paving and pavement markings along U.S. 2, U.S. 7, and the interstate ramps.
- ➔ Final site clean-up and restoration.

**Contact Our Public Information Team**  
 24-Hour Project Hotline: 802-595-4399  
 Email: [info@ColchesterExit17.com](mailto:info@ColchesterExit17.com)



➔ **Join our Project Update Mailing List**  
 Scan the QR code or visit us at [lp.constantcontactpages.com/sl/JqQ3mdi](http://lp.constantcontactpages.com/sl/JqQ3mdi) to join our project update email list



➔ **Visit the Project Website**  
 Scan the QR code or visit us at [vtrans.vermont.gov/projects/colchester-exit17](http://vtrans.vermont.gov/projects/colchester-exit17) to learn more about the Exit 17 Project