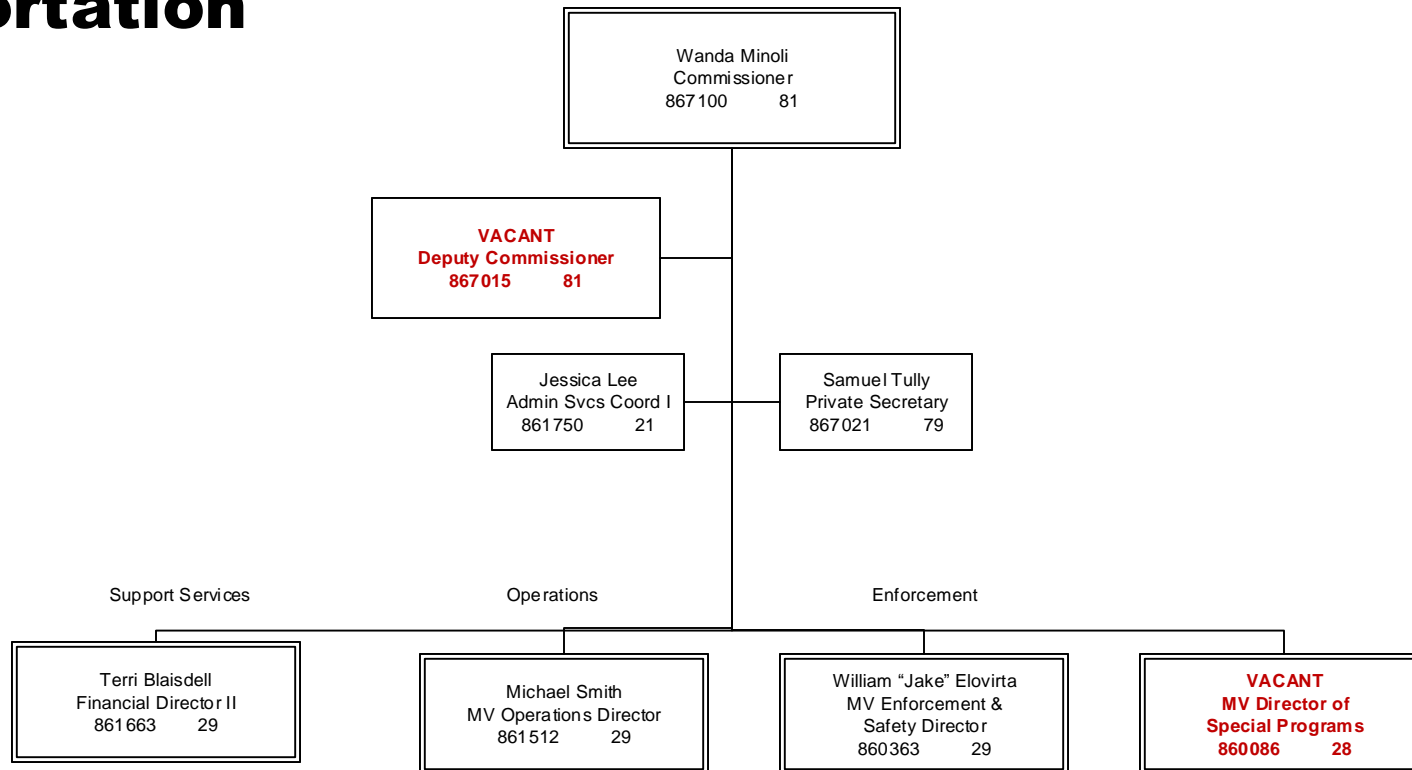


Agency of Transportation

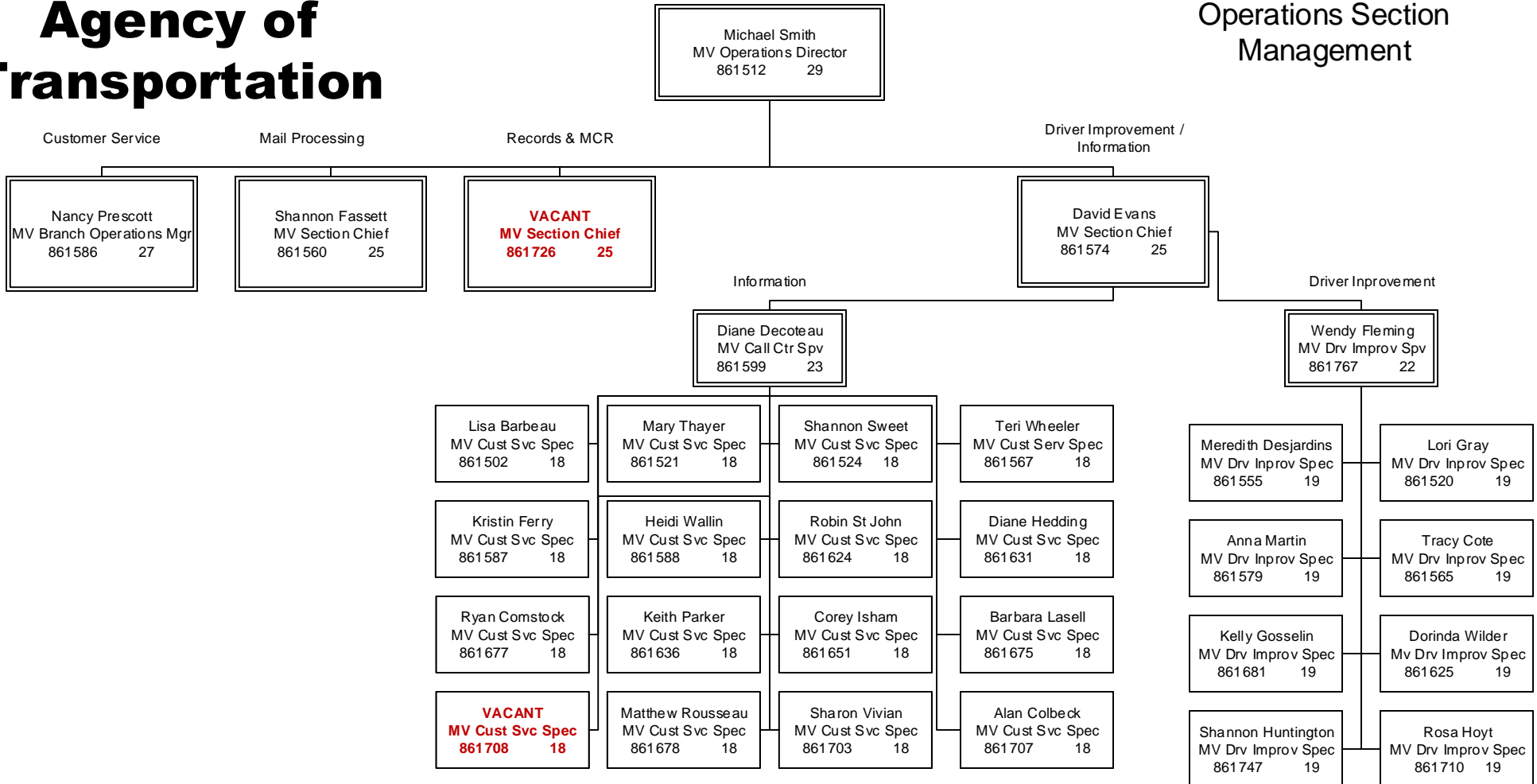
Department of Motor
Vehicles

Commissioner



Agency of Transportation

Operations Section
Management

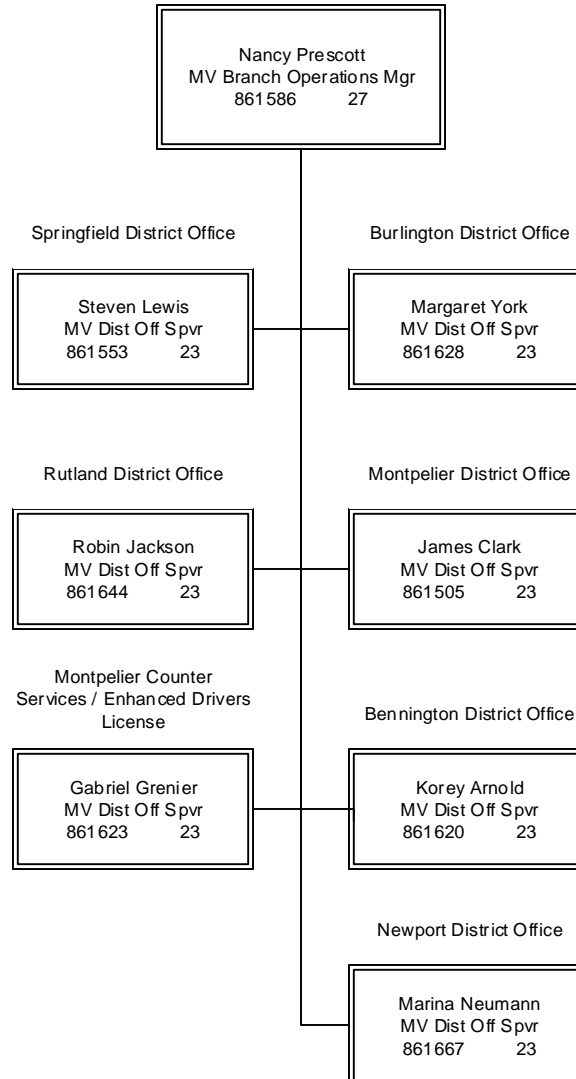




Agency of Transportation

Department of Motor Vehicles

Operations Section Customer Services Units



FY19

Updated 09 09 2019



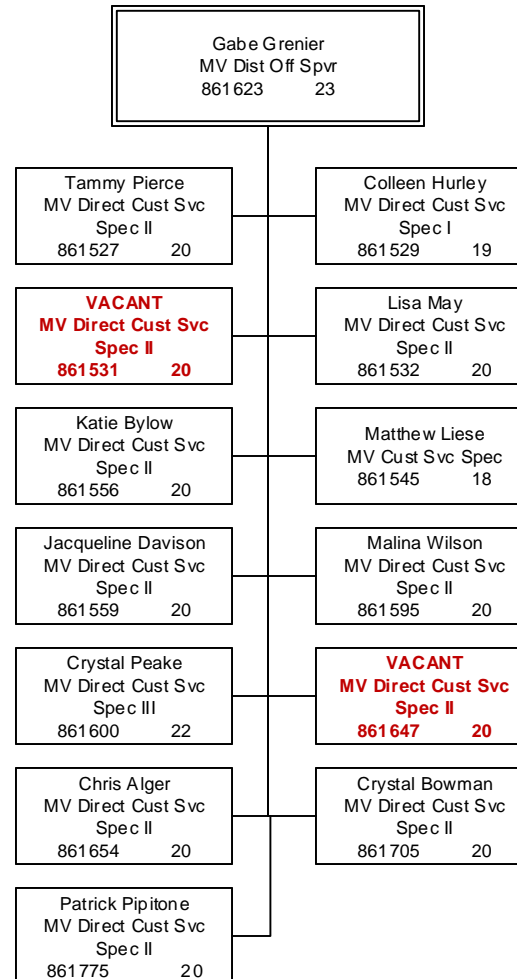
Agency of Transportation

Department of Motor Vehicles

Operations Section
Customer Services Units

Montpelier Office

Counter Services / Enhanced Drivers License



FY19

Updated 09 09 2019



Agency of Transportation

Department of Motor Vehicles Operations Section Customer Services Units Branch Offices

Springfield District Office

Stephan Lewis
MV Dist Off Spvr
861553 23

Douglas Keleher
MV Exam II
861511 19

Kevin Vancor
MV Direct Cust Svc
Spec II
861546 20

Luann Jenkins
MV Direct Cust Svc
Spec II
861596 20

Michelle Rumrill
MV Direct Cust Svc
Spec III
861629 22

Marissa Stack
MV Direct Cust Svc
Spec I
861731 19

Bennington District Office

Korey Arnold
MV Dist Off Spvr
861620 23

Nicholas Nahodil
MV Exam II
861509 19

Shannon McDermott
MV Direct Cust Svc
Spec I
861557 19

Gisele Cadoret
MV Direct Cust Svc
Spec II
861732 20

Mary Hickey
MV Direct Cust Svc
Spec II
861744 20

So. Burlington District Office

Margaret York
MV Dist Off Spvr
861628 23

Justin McLane
MV Exam II
861590 19

Vicki Catella
MV Direct Cust Svc
Spec II
860110 20

Flo Damon/
Karen Keelty
MV Direct Cust Svc Spec
II
861517 20

Autumn Nobel
MV Direct Cust Svc
Spec II
861536 20

Anne Chagnon
MV Direct Cust Svc
Spec II
861609 20

Mark Roberts
MV Direct Cust Svc
Spec I
861621 19

Raymond Jablonski
MV Direct Cust Svc
Spec I
861701 19

Cynthia Emmons
MV Direct Cust Svc
Spec II
861714 20

Tucker Krause
MV Direct Cust Svc
Spec I
861771 19

Edward Martin Jr
MV Exam II
861698 19

Melissa Wood
MV Direct Cust Svc
Spec II
861507 20

Paul Chun
MV Direct Cust Svc
Spec III
861523 20

Patricia Goyet
MV Direct Cust Svc
Spec II
861581 20

Pamela Conant/
Asima Cosabic
MV Direct Cust Svc Spec I
861612 19

Asmir Barucic
MV Direct Cust Svc
Spec I
861689 19

Kristie Martell
MV Direct Cust Svc
Spec I
861712 19

Diana Woodruff
MV Direct Cust Svc
Spec I
861768 19

Maryeugenia St Peter
MV Direct Cust Svc
Spec I
861777 19

Rutland District Office

Robin Jackson
MV Dist Off Spvr
861644 23

Southern Mobile Unit

Donna Thomson
MV MU Coord
861766 20

Deborah Sheldon
MU Cust Svc Tech
861763 19

Tami Walker
MU Cust Svc Tech
861764 19

Gretchen Monez
MU Cust Svc Tech
861765 19

Rutland

Hannah Whittemore
MV Exam II
861697 19

Kaitlin Keefe
MV Cust Svc Spec
861522 18

Andrew Baccei
MV Direct Cust Svc
Spec II
861528 20

Kara Eaton
MV Direct Cust Svc
Spec III
861564 22

Rachel Brzoza
MV Direct Cust Svc
Spec II
861568 20

Joseph Caliguiri
MV Direct Cust Svc
Spec II
861575 20

Malia Baker
MV Direct Cust Svc
Spec II
861674 20

Montpelier District Office

James Clark
MV Dist Off Spvr
861505 23

Charlene Govea
MV Exam II
861571 19

Steven Sicard
MV MU Coord
861592 20

Cameron Lawson
MU Cust Svc Tech
860068 19

Lisa Fletcher
MU Cust Svc Tech
861566 19

Vicki Woodard
MU Cust Svc Tech
861709 19

Pamela Scully
MU Cust Svc Tech
861715 19

Maria Baker
MV Direct Cust Svc
Spec II
861674 20

Newport District Office

Marina Neumann
MV Dist Off Spvr
861667 23

Sean Quinn
MV Exam II
861591 19

Ali Thurston
MV Direct Cust Svc
Spec I
861503 19

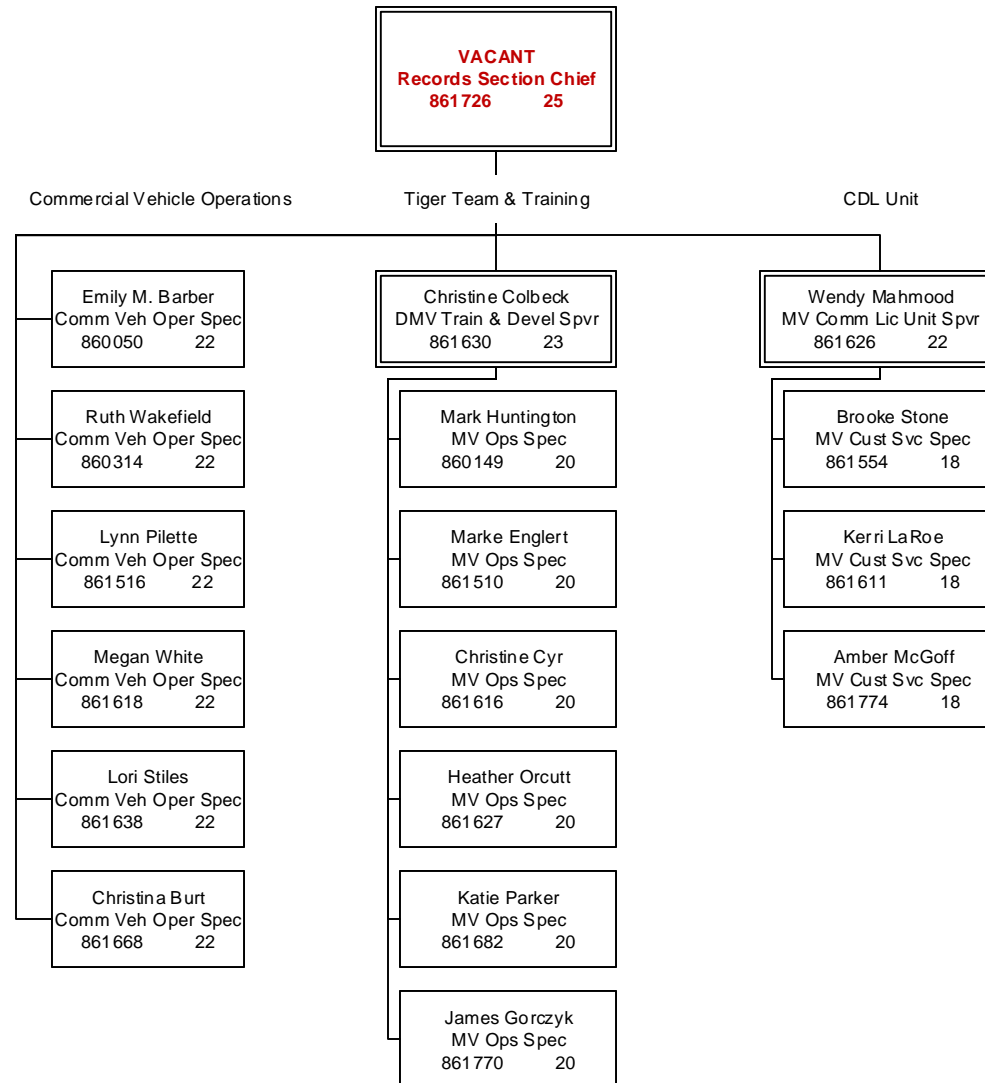
Candy Mayhew
MV Direct Cust Svc
Spec II
861662 20

Marie Blodgett
MV Direct Cust Svc
Spec II
861743 20



FY19

Updated 09 09 2019

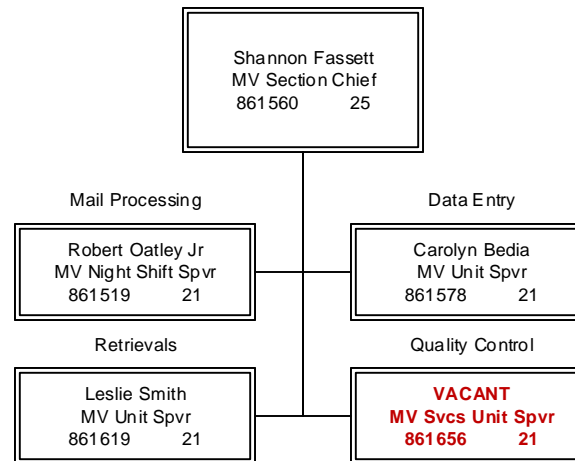




Agency of Transportation

Department of Motor Vehicles

Operations Section
Mail Processing Units



FY19

Updated 09 09 2019



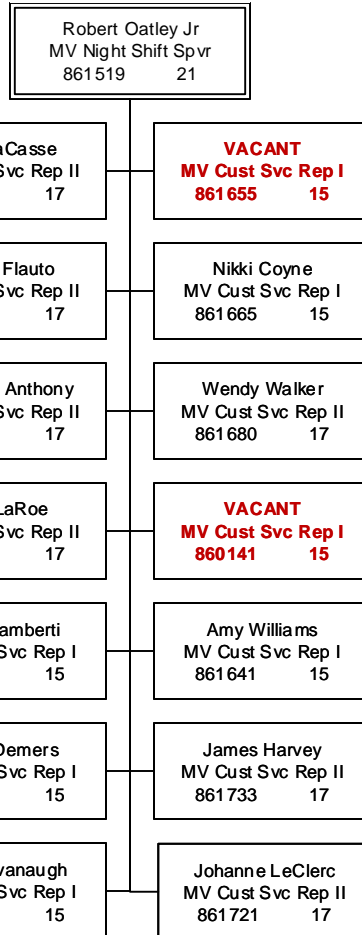
Agency of Transportation

Department of Motor Vehicles

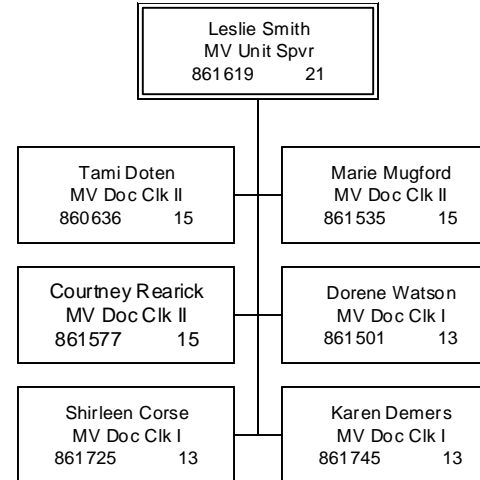
Operations Section Mail Processing

Mail Processing & Retrievals

Mail Processing



Retrievals



FY19

Updated 09 09 2019



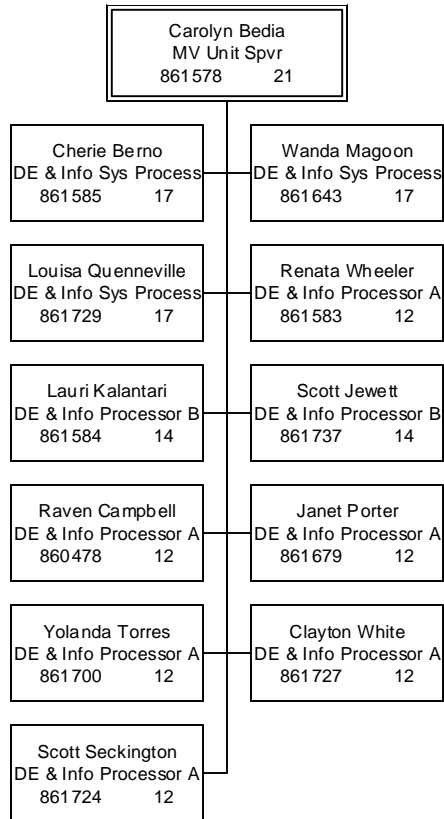
Agency of Transportation

Department of Motor Vehicles

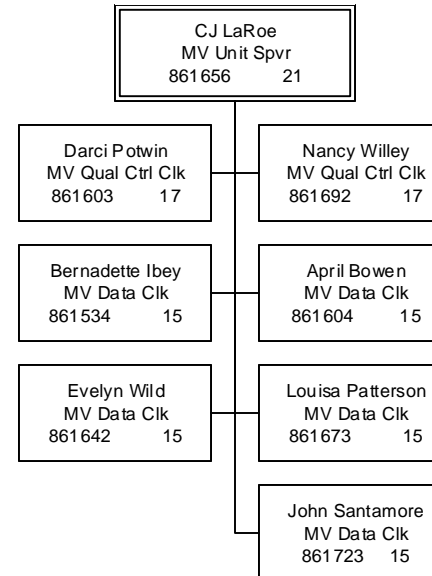
Operations Section Mail Processing

Data Entry & Quality Control

Data Entry



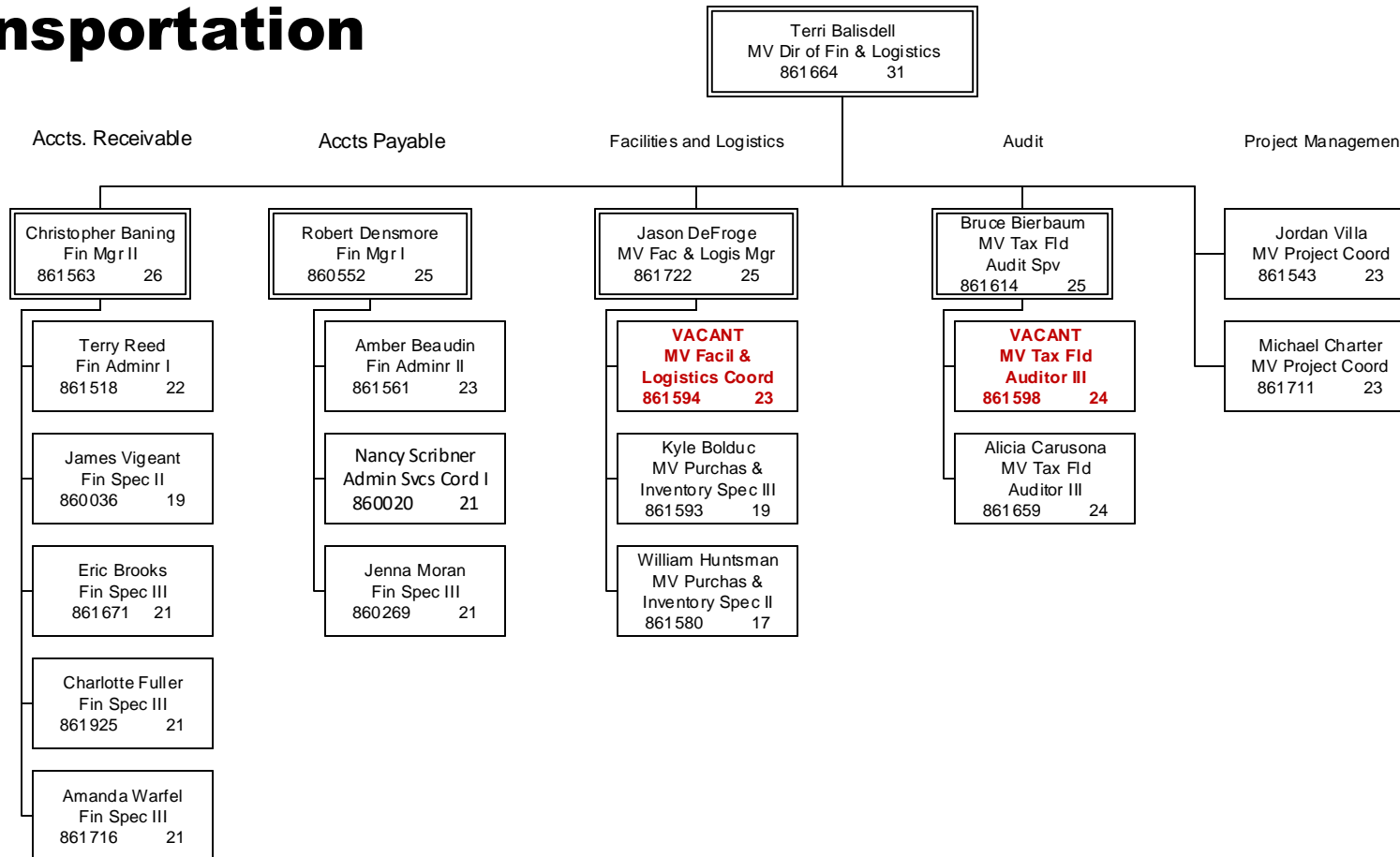
Quality Control



FY19

Updated 09 09 2019

Agency of Transportation



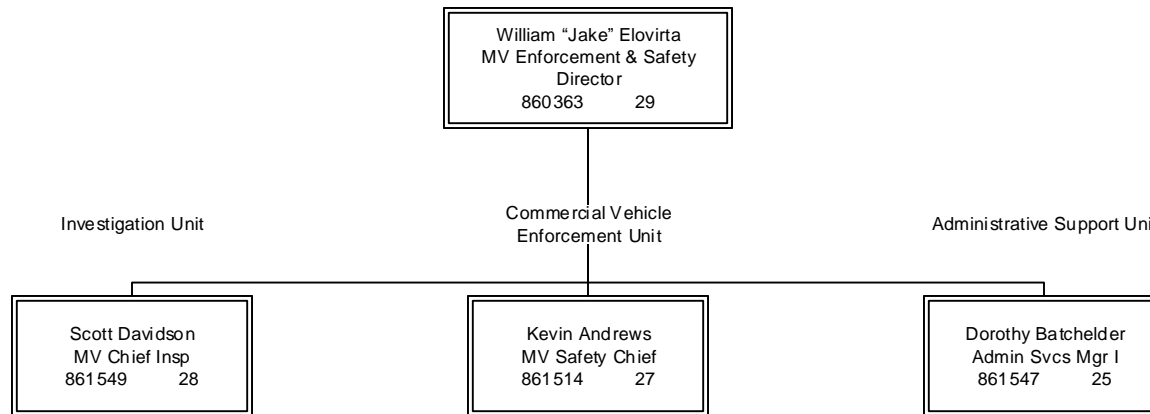


Agency of Transportation

Department of Motor Vehicles

Motor Vehicle Enforcement & Safety

Office of the Director



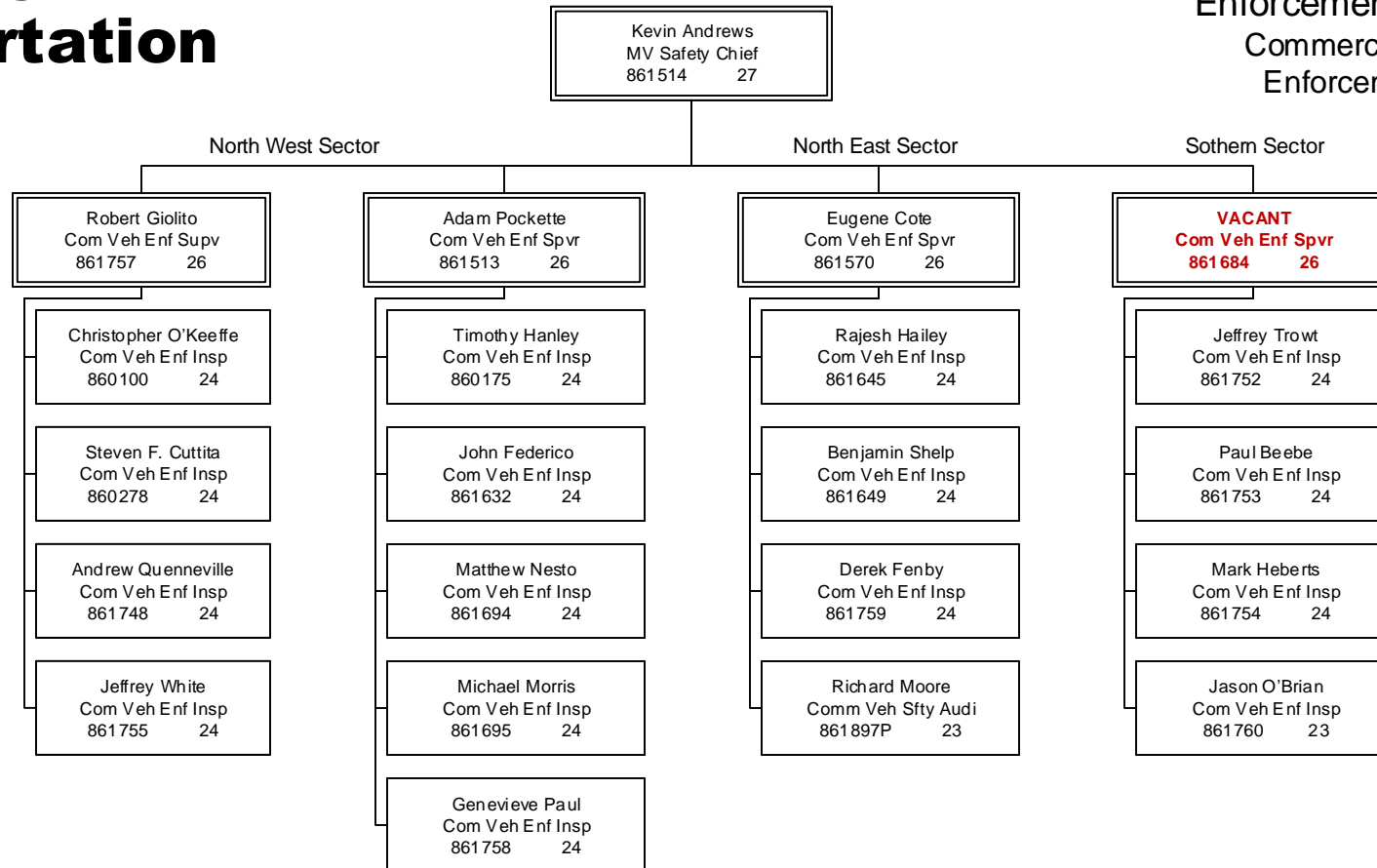
FY19

Updated 09 09 2019

Agency of Transportation

Department of Motor Vehicles

Motor Vehicle Enforcement & Safety Commercial Vehicle Enforcement Unit



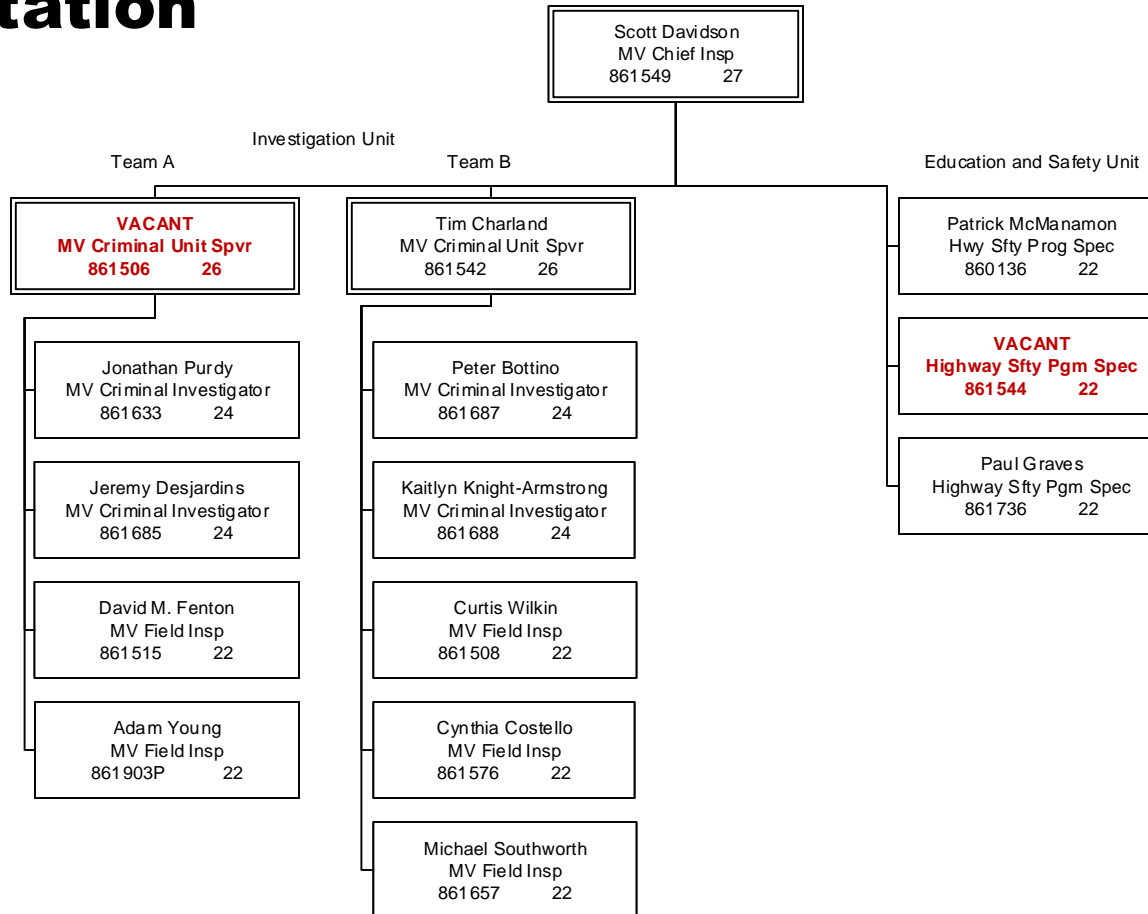


Agency of Transportation

Department of Motor Vehicles

Motor Vehicle Enforcement & Safety

Investigation Unit



FY19

Updated 09 09 2019



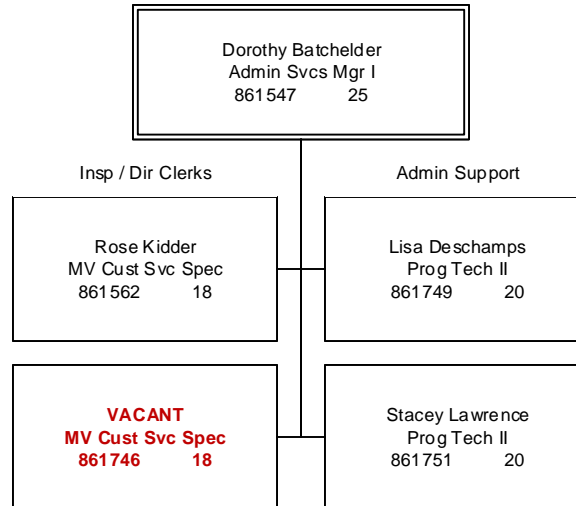
VERMONT

Agency of Transportation

Department of Motor Vehicles

Motor Vehicle Enforcement & Safety

Administrative Support Unit



FY19

Updated 09 09 2019