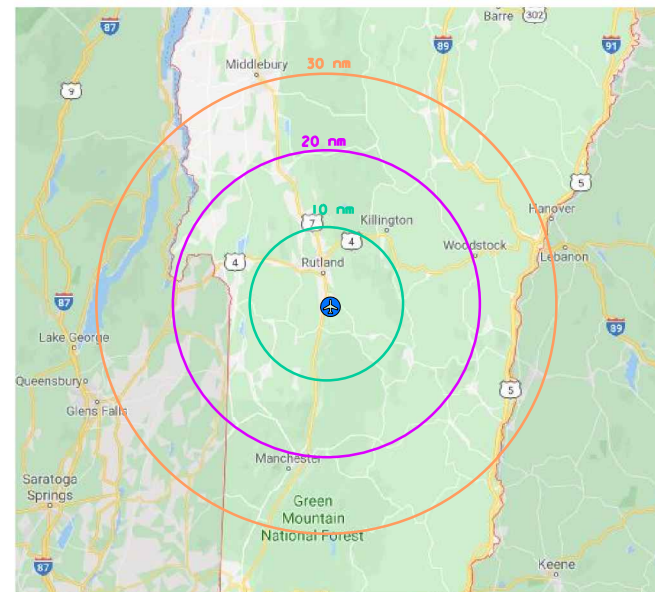
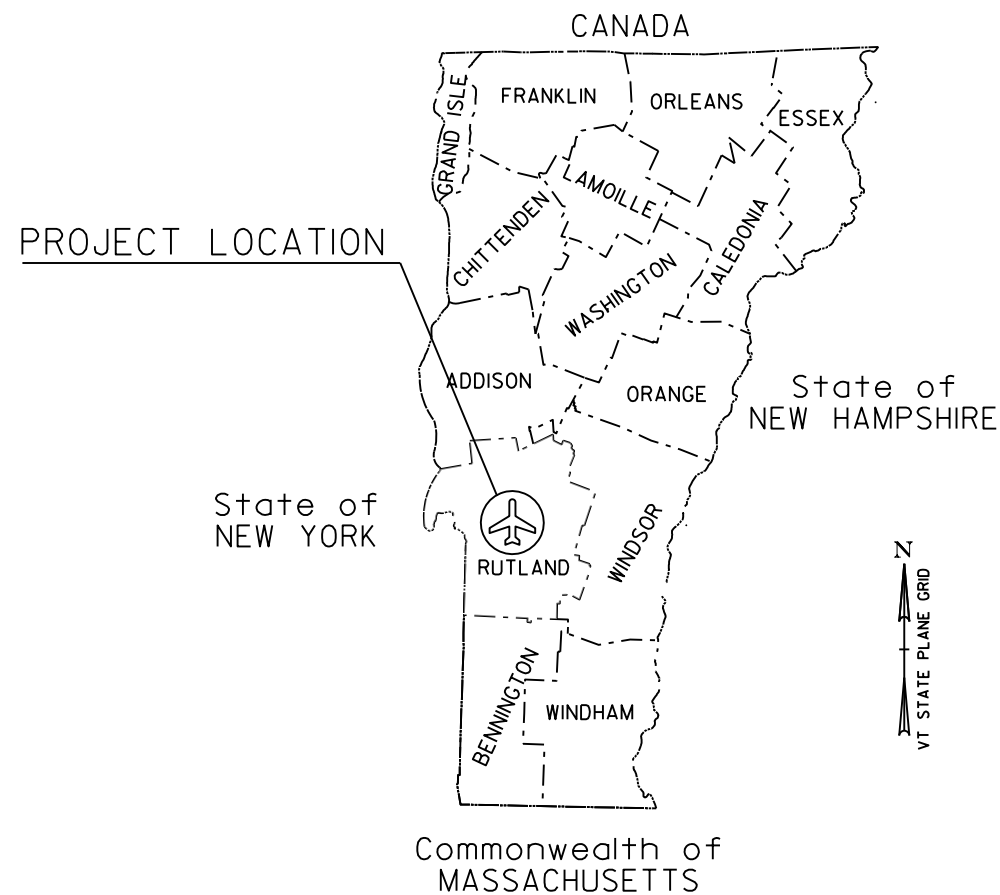


VERMONT AGENCY OF TRANSPORTATION RUTLAND - SOUTHERN VERMONT REGIONAL AIRPORT AIRPORT LAYOUT PLAN SEPTEMBER 2021

SPACE RESERVED FOR FAA APPROVAL



VICINITY MAP

SHEET INDEX		
SHEET NO.	DESCRIPTION	REVISION DATE
1	TITLE SHEET	
2	AIRPORT DATA SHEET	
3	EXISTING AIRPORT LAYOUT PLAN	
4	FUTURE AIRPORT LAYOUT PLAN	
5	AIRPORT AIRSPACE PLAN	
6	RUNWAY 1 INNER PORTION OF APPROACH	
7	RUNWAY 19 INNER PORTION OF APPROACH	
8	RUNWAY 13 INNER PORTION OF APPROACH	
9	RUNWAY 31 INNER PORTION OF APPROACH	
10	RUNWAY OBSTRUCTION DATA OBSTRUCTION	
11	TERMINAL AREA PLAN	
12	LAND USE PLAN	
13	AIRPORT PROPERTY MAP	

REVISIONS			
NO.	Description	Date	By

VERMONT AGENCY OF TRANSPORTATION

APPROVED _____ DATE _____
Daniel Delabriere
RAIL AND AVIATION BUREAU DIRECTOR

PROJECT NAME: AIRPORT LAYOUT PLAN
PROJECT NUMBER: CLARENDON-AV-FY17-007

FILE NAME: z16h171.cov.dgn
PROJECT LEADER: POM
DESIGNED BY: CJK/AJF
TITLE SHEET

PLOT DATE: 9/10/2021
DRAWN BY: MED
CHECKED BY: RTL
SHEET 1 OF 13



FILE NAME = N:\p\objects\ANY\K5_36086\CADD\MSTIN16h171\Consult\trans\Aviation\z16h171.cov.dgn
 DATE/TIME = 9/10/2021 10:40:00
 USER = 4066

AIRPORT DATA		
RUTLAND - SOUTHERN VERMONT REGIONAL AIRPORT 1002 Airport Road North Clarendon, VT 05759		
ITEM	Existing	Future
AIRPORT OWNER	Vermont Agency of Transportation	
STATE SERVICE LEVEL	National Service ¹	
NPIAS SERVICE LEVEL	Regional	
AIRPORT REFERENCE CODE / CRITICAL AIRCRAFT	C-II / Challenger 300	C-II / Challenger 300
MEAN MAXIMUM TEMPERATURE OF HOTTEST MONTH	80.2° F (July)	
AIRPORT ELEVATION (MSL) NAVD 88	787.3 FT	
MAGNETIC DECLINATION	13° 48' W ± 0° 23' changing by 0° 4' E per year ²	
AIRPORT REFERENCE POINT (NAD 83)	LAT: 43° 31' 47.03"N Long: 72° 56' 58.65"W	LAT: 43° 31' 47.03"N Long: 72° 56' 58.65"W
AIRPORT NAVIGATIONAL AIDS AND MISCELLANEOUS FACILITIES	ILS, GPS, MALS, PAPI-4, AWOS-3, Rotating Beacon	

Note 1: 2007 Vermont Airport System and Policy Plan

Note 2: NOAA National Centers for Environmental Information, August 2021

RUNWAY SAFETY AREA DATA					
DESCRIPTION		RUNWAY 1-19		RUNWAY 13-31	
		EXISTING/FUTURE		EXISTING/FUTURE	
		1	19	13	31
RUNWAY SAFETY AREA (RSA)	(R) LENGTH BEYOND RUNWAY END	600 FT	1,000 FT	300 FT	300 FT
	(P) LENGTH PRIOR TO RUNWAY END	600 FT	600 FT	300 FT	300 FT
	(C) WIDTH	400 FT	400 FT	150 FT	150 FT
RUNWAY OBJECT FREE AREA (ROFA)	(R) LENGTH BEYOND RUNWAY END	1,000 FT	1,000 FT	300 FT	300 FT
	(P) LENGTH PRIOR TO RUNWAY END	600 FT	600 FT	300 FT	300 FT
	(Q) WIDTH	800 FT	800 FT	500 FT	500 FT
APPROACH RUNWAY PROTECTION ZONE (RPZ)	(L) LENGTH	1,700 FT	2,500 FT	1,000 FT	1,000 FT
	(U) INNER WIDTH	500 FT	1,000 FT	500 FT	500 FT
	(V) OUTER WIDTH	1,010 FT	1,750 FT	700 FT	700 FT
DEPARTURE RUNWAY PROTECTION ZONE (RPZ)	(L) LENGTH	1,700 FT	1,700 FT	1,000 FT	1,000 FT
	(U) INNER WIDTH	500 FT	500 FT	500 FT	500 FT
	(V) OUTER WIDTH	1,010 FT	1,010 FT	700 FT	700 FT
RUNWAY OBSTACLE FREE ZONE (ROFZ)	LENGTH BEYOND RUNWAY END	400 FT.	400 FT.	200 FT.	200 FT.
	WIDTH	400 FT	400 FT	250 FT	250 FT
PRECISION OBSTACLE FREE ZONE (POFZ)	LENGTH	N/A	200 FT	N/A	N/A
	WIDTH	N/A	800 FT	N/A	N/A

ALL WEATHER WIND COVERAGE			
RUNWAY	10.5 KNOTS	13 KNOTS	16 KNOTS
1-19	92.90%	96.53%	99.06%
13-31	97.89%	99.16%	N/A
COMBINED	99.18%	99.80%	N/A

VFR WEATHER WIND COVERAGE			
RUNWAY	10.5 KNOTS	13 KNOTS	16 KNOTS
1-19	92.60%	96.40%	99.06%
13-31	97.80%	99.12%	N/A
COMBINED	99.13%	99.79%	N/A

IFR WEATHER WIND COVERAGE			
RUNWAY	10.5 KNOTS	13 KNOTS	16 KNOTS
1-19	96.41%	97.90%	99.04%
13-31	98.90%	97.90%	N/A
COMBINED	99.71%	99.88%	N/A

Data Source:
NOAA National Climatic Center Asheville, NC
Rutland - Southern Vermont Regional Airport
North Clarendon, VT 05759
Station 725165
20011- 2020

RUNWAY DATA						
DESCRIPTION	RUNWAY 1-19		FUTURE		RUNWAY 13-31	
	1	19	1	19	13	31
RUNWAY LENGTH	5,304 FT				3,169 FT	
RUNWAY WIDTH	100 FT				75 FT	
PAVEMENT TYPE / SURFACE TYPE	ASPHALT / GROOVED				ASPHALT	
PAVEMENT CONDITION	GOOD				GOOD	
PAVEMENT CONDITION NUMBER	73 (CY 2012)				87 (CY 2012)	
PAVEMENT STRENGTH (SINGLE)	40,000 LBS				30,000 LBS	
PAVEMENT STRENGTH (DUAL)	68,000 LBS				-	
EFFECTIVE RUNWAY GRADIENT	0.14%				0.00%	
MAXIMUM RUNWAY GRADIENT	< 0.5%				< 0.5%	
RUNWAY MEETS LINE OF SIGHT REQUIREMENTS? (YES/NO)	NO (TERRAIN)				NO (TERRAIN)	
APPROACH TYPE	NON-PRECISION		PRECISION		VISUAL	
APPROACH VISIBILITY MINIMUM	1 ¼ MILE		½ MILE ¹		VISUAL	
RUNWAY CATEGORY (14 CFR PART 77) / SLOPE	NON-PRECISION / 34:1		PRECISION / 50:1		VISUAL / 20:1	
DESIGN AIRCRAFT	CHALLENGER 300				BEECH KING AIR 200	
RUNWAY DESIGN CODE (RDC)	C-II-2400				B-II-VIS	
APPROACH RUNWAY REFERENCE CODE (APRC)	B / III / 4000 D / II / 4000 B / II / 2400	B / III / 5000 D / II / 5000	SAME AS EXISTING		B / II / VIS	
DEPARTURE RUNWAY SURFACE	YES		YES		NO	
OBSTACLE CLEARANCE SURFACE (TABLE 3-2)	SEE OCS TABLE		SEE OCS TABLE		SEE OCS TABLE	
TOUCHDOWN ZONE ELEVATION	787.3 FT		787.3 FT		784.5 FT	
HORIZONTAL / VERTICAL DATUM	NAD 83 / NAVD 88		NAD 83 / NAVD 88		NAD 83 / NAVD 88	
AERONAUTICAL SURVEY	VGS		VGS		NVGS	
RUNWAY MARKINGS	NON-PRECISION		PRECISION		VISUAL	
RUNWAY LIGHTING	MIRL		MIRL		MIRL	
APPROACH LIGHTING	NONE		MALS		NONE	
INSTRUMENT & NAVIGATIONAL AIDS	GPS		ILS, GPS, PAPI-4		REIL	
DISPLACED THRESHOLD COORDINATES & ELEVATIONS	LATITUDE	43° 31' 29.61"N	N/A		N/A	
	LONGITUDE	72° 56' 58.21"W	N/A		N/A	
	DISTANCE	300 FT	N/A		N/A	
	ELEVATION	782.6 FT	N/A		N/A	
RUNWAY END COORDINATES & ELEVATIONS	LATITUDE	43° 31' 26.65"N	43° 32' 19.01"N		43° 31' 29.82"N	
	LONGITUDE	72° 56' 58.11"W	72° 56' 59.96"W		72° 57' 16.90"W	
	ELEVATION	781.3 FT	774.0 FT		782.2 FT	
DECLARED DISTANCES	TORA	5,303 FT	5,303 FT		N/A	
	TODA	5,303 FT	5,303 FT		N/A	
	ASDA	4,900 FT	5,303 FT		N/A	
	LDA	4,600 FT	5,303 FT		N/A	
	CLEARWAY	N/A	N/A		N/A	
	STOPWAY	N/A	N/A		N/A	

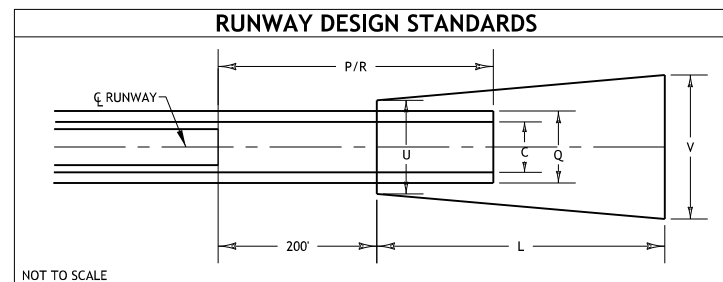
Note 1: Visibility Minimum for Runway 19 S-LOC Approach

TAXIWAY DATA						
TAXIWAY NAME	TAXIWAY LIGHTING	TAXIWAY DESIGN GROUP	TAXIWAY WIDTH	TAXIWAY SAFETY AREA	TAXIWAY OBJECT FREE AREA	TW to RW CENTERLINE SEPERATION
EXISTING/FUTURE	EXISTING/FUTURE	EXISTING/FUTURE	EXISTING/FUTURE	EXISTING/FUTURE	EXISTING/FUTURE	EXISTING/FUTURE
A	MITL	2	50 FT	118 FT	186 FT	238 FT
B	MITL	2	35 FT	79 FT	131 FT	239 FT
C	MITL	2	50 FT	118 FT	186 FT	238 FT
D	NONE	2	35 FT	79 FT	131 FT	240 FT
F	NONE	2	30 FT	79 FT	131 FT	N/A
G	MITL	2	35 FT	79 FT	131 FT	N/A
H	MITL	2	50 FT	118 FT	118 FT	N/A
J	MITL	2	50 FT	118 FT	118 FT	N/A

MODIFICATIONS TO FAA DESIGN STANDARDS			
APPROVAL DATE	AIRSPACE CASE NO.	MODIFIED STANDARD	DESCRIPTION
NONE	NONE	NONE	NONE

OBSTACLE CLEARANCE SURFACES (OCS)							
RUNWAY	ROW/TYPE	SLOPE	A	B	C	D	E
1	4	20:1	200 FT	400 FT	3,400 FT	10,000 FT	0 FT
19	5	34:1	200 FT	400 FT	3,400 FT	10,000 FT	0 FT
	6	30:1	0 FT	300 FT	1,520 FT	10,000 FT	0 FT
13	2	20:1	0 FT	250 FT	700 FT	2,250 FT	2,750 FT
31	2	20:1	0 FT	250 FT	700 FT	2,250 FT	2,750 FT

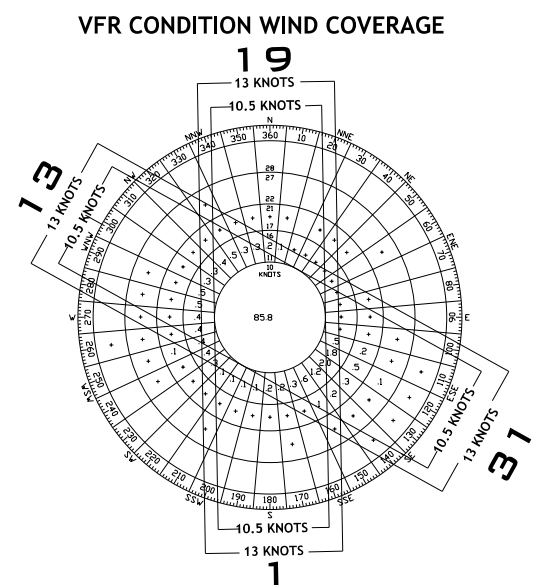
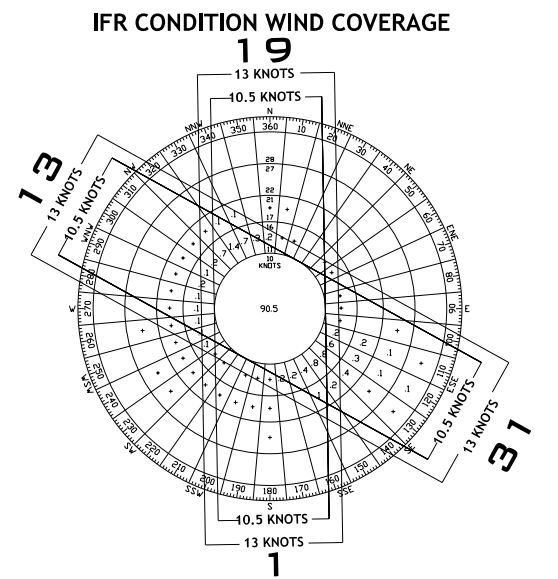
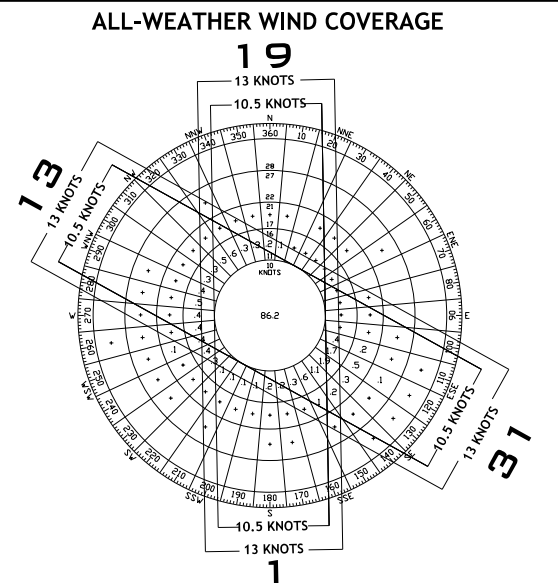
Source: FAA Engineering Brief 99A



REVISIONS			
NO.	Description	Date	By

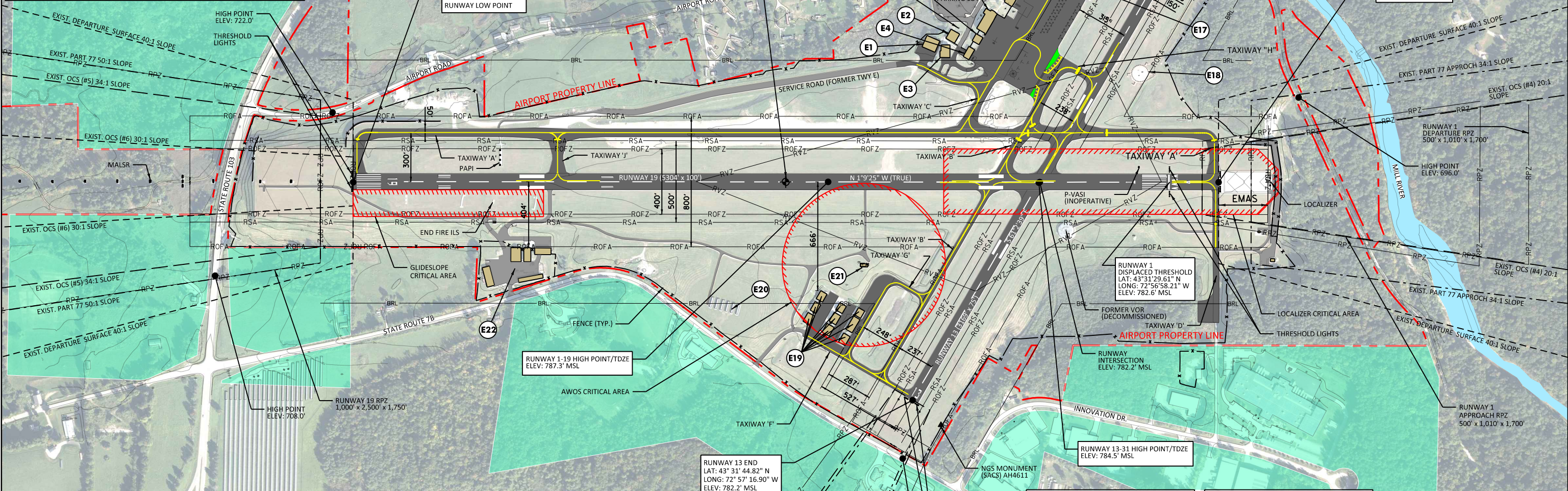
CIA
111 Winners Circle, PO Box 5269 Albany, NY 12205-0269
518.453.4500 • www.chacompanies.com

PROJECT NAME: AIRPORT LAYOUT PLAN
PROJECT NUMBER: CLARENDON-AV-FY17-007
FILE NAME: z16h171.data.sheet.dgn
PROJECT LEADER: POM
DESIGNED BY: CJK/AJF
AIRPORT DATA SHEET
PLOT DATE: 9/10/2021
DRAWN BY: MED
CHECKED BY: RTL
SHEET 2 OF 13



FILE NAME = N:\p\objects\AV\NY\KES_360865.CADD\MSTIN\16h171\Consult\16h171\Avr\station\z16h171.data.sheet.dgn
DATE/TIME = 9/10/2021
USER = 4066

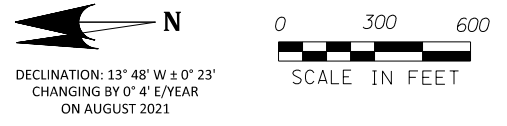
AIRPORT FACILITIES		
IDENTIFIER	FACILITY	TOP ELEVATION (MSL)
E1	CORPORATE HANGAR (OMYA)	816.6'
E2	CIVIL AIR PATROL	801.4'
E3	CORPORATE HANGAR (S.D. AIRCRAFT)	806.6'
E4	ARFF STATION	796.4'
E5	CIVIL AIR PATROL	804.2'
E6	VTRANS HANGAR/SRE STORAGE	813.6'
E7	TERMINAL BUILDING	811.8'
E8	CORPORATE HANGAR (PRIVATE)	802.8'
E9	CORPORATE HANGAR (PRIVATE)	808.8'
E10	CORPORATE HANGAR (COLUMBIA AIR)	812.2'
E11	CORPORATE HANGAR (PRIVATE)	806.4'
E12	CORPORATE HANGAR (COLUMBIA AIR)	814.6'
E13	FBO BUILDING (COLUMBIA AIR)	801' (EST.)
E14	CORPORATE HANGAR (COLUMBIA AIR)	815'
E15	T-HANGAR (5-STALLS)	805.1'
E16	T-HANGAR (7-STALLS)	805.1'
E17	FUEL FARM (LIGHT POLE)	10'
E18	SEGMENTED CIRCLE	785'
E19	CORPORATE HANGARS (PRIVATE)	801.6' - 806.7'
E20	SOLAR ARRAY	791' (EST.)
E21	AWOS-III	825.2'
E22	VTRANS STORAGE FACILITIES	775.2' - 780.3'



FILE NAME = \\snp\projects\AVIATION\MSIN\16171\Consult\16171\Consult\16171\16171_Exist Layout Plan.dgn
 DATE/TIME = 9/10/2021
 USER = 4066

LEGEND

- EX. BUILDING
- AIRFIELD PAVEMENT
- EX. AVIGATION EASEMENTS
- CREEK / WATERWAY
- 800 ELEVATION CONTOURS
- RPZ RUNWAY PROTECTION ZONE (RPZ)
- RSA RUNWAY SAFETY AREA (RSA)
- ROFA RUNWAY OBJECT FREE AREA (ROFA)
- ROFZ RUNWAY OBSTACLE FREE ZONE (ROFZ)
- RVZ RUNWAY VISIBILITY ZONE (RVZ)
- TSA TAXIWAY SAFETY AREA (TSA)
- TOFA TAXIWAY OBJECT FREE AREA (TOFA)
- BRL 35' BUILDING RESTRICTION LINE (BRL)
- NAVAID CRITICAL AREA
- PART 77 APPROACH SURFACE
- OBSTACLE CLEARANCE SURFACE (OCS)
- EX. AIRPORT PROPERTY LINE
- EX. FENCE LINE
- SURVEY MARKER
- AIRPORT REFERENCE POINT (ARP)
- EX. WINDCONE



VERMONT AGENCY OF TRANSPORTATION

APPROVED:
 Daniel DeLabeure
 RAIL AND AVIATION BUREAU DIRECTOR
 DATE _____



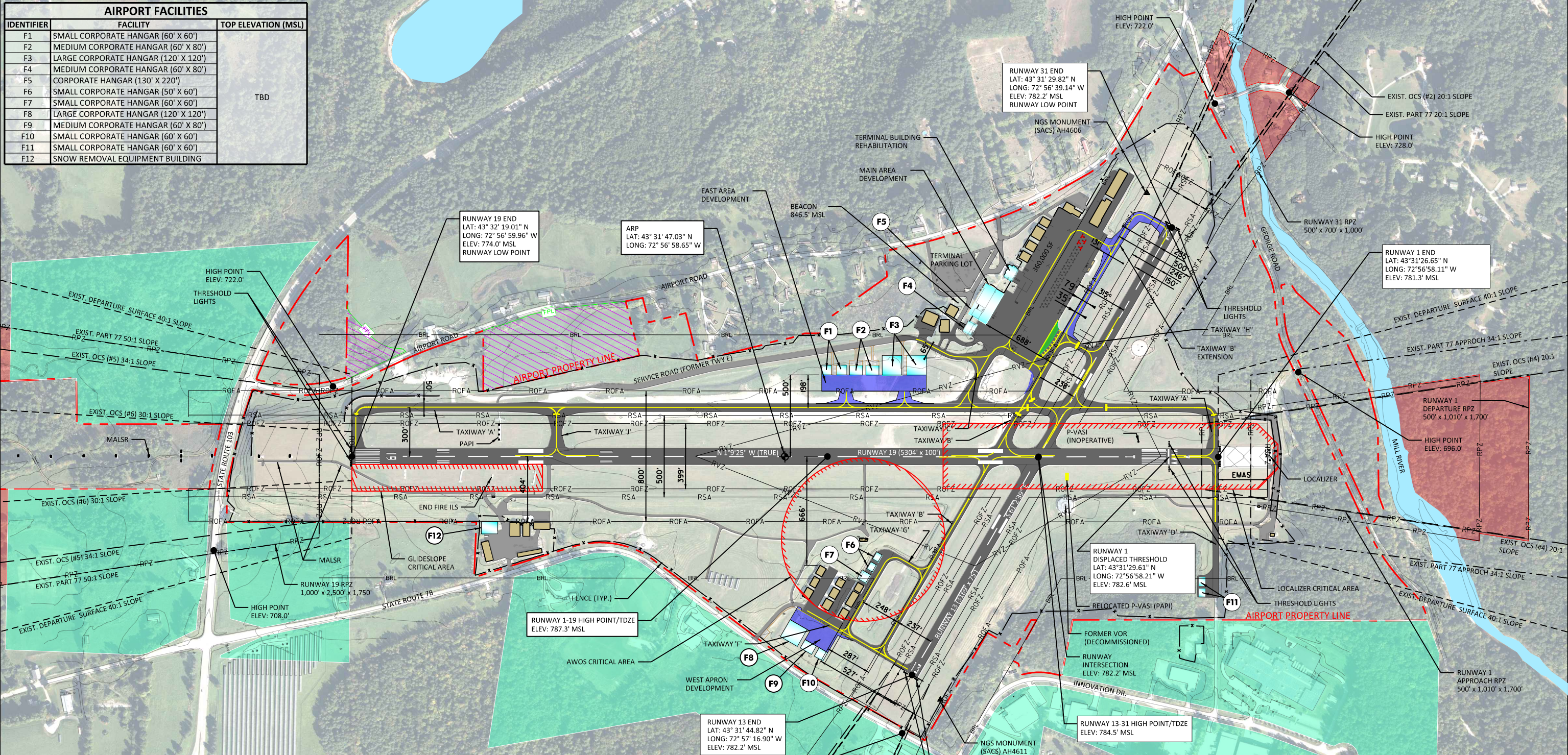
111 Winners Circle, PO Box 5269 Albany, NY 12205-0269
 518.453.4500 • www.chacompanies.com

SPACE RESERVED FOR FAA APPROVAL

REVISIONS			
NO.	Description	Date	By

PROJECT NAME: AIRPORT LAYOUT PLAN
 PROJECT NUMBER: CLARENDON-AV-FY17-007
 FILE NAME: z16171_Exist Layout Plan.dgn
 PROJECT LEADER: POM
 DESIGNED BY: CJK/AJF
 EXISTING AIRPORT LAYOUT PLAN
 PLOT DATE: 9/10/2021
 DRAWN BY: MED
 CHECKED BY: RTL
 SHEET 3 OF 13

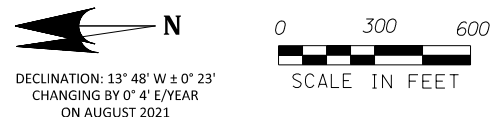
AIRPORT FACILITIES		
IDENTIFIER	FACILITY	TOP ELEVATION (MSL)
F1	SMALL CORPORATE HANGAR (60' X 60')	TBD
F2	MEDIUM CORPORATE HANGAR (60' X 80')	
F3	LARGE CORPORATE HANGAR (120' X 120')	
F4	MEDIUM CORPORATE HANGAR (60' X 80')	
F5	CORPORATE HANGAR (130' X 220')	
F6	SMALL CORPORATE HANGAR (50' X 60')	
F7	SMALL CORPORATE HANGAR (60' X 60')	
F8	LARGE CORPORATE HANGAR (120' X 120')	
F9	MEDIUM CORPORATE HANGAR (60' X 80')	
F10	SMALL CORPORATE HANGAR (60' X 60')	
F11	SMALL CORPORATE HANGAR (60' X 60')	
F12	SNOW REMOVAL EQUIPMENT BUILDING	



FILE NAME = \\P:\projects\AVIATION\CAADD\MSTIN16h171\Consultants\Aviation\z16h171\Future Layout Plan.dgn
 DATE/TIME = 9/10/2021
 USER = 4066

LEGEND

- EX. BUILDING
- AIRFIELD PAVEMENT
- CREEK / WATERWAY
- 800' ELEVATION CONTOURS
- RUNWAY PROTECTION ZONE (RPZ)
- RUNWAY SAFETY AREA (RSA)
- RUNWAY OBJECT FREE AREA (ROFA)
- RUNWAY OBSTACLE FREE ZONE (ROFZ)
- RUNWAY VISIBILITY ZONE (RVZ)
- TAXIWAY SAFETY AREA (TSA)
- TAXIWAY OBJECT FREE AREA (TOFA)
- 35' BUILDING RESTRICTION LINE (BRL)
- PART 77 APPROACH SURFACE
- OBSTACLE CLEARANCE SURFACE (OCS)
- GLIDE SLOPE CRITICAL AREA
- EX. AIRPORT PROPERTY LINE
- EX. FENCE LINE
- SURVEY MARKER
- AIRPORT REFERENCE POINT (ARP)
- EX. WINDCONE
- FUTURE HANGER DEVELOPMENT
- FUTURE APRON/TAXIWAY PAVEMENT/BUILDING REMOVAL
- FUTURE PROPERTY LINE
- FUTURE TAXIWAY/TAXILANE
- OBJECT FREE AREA/SAFETY AREA
- EX. AVIGATION EASEMENTS
- FUTURE AVIGATION EASEMENTS
- FUTURE PROPERTY ACQUISITION



VERMONT AGENCY OF TRANSPORTATION

APPROVED:
 Daniel DeLabeure
 RAIL AND AVIATION BUREAU DIRECTOR

DATE _____



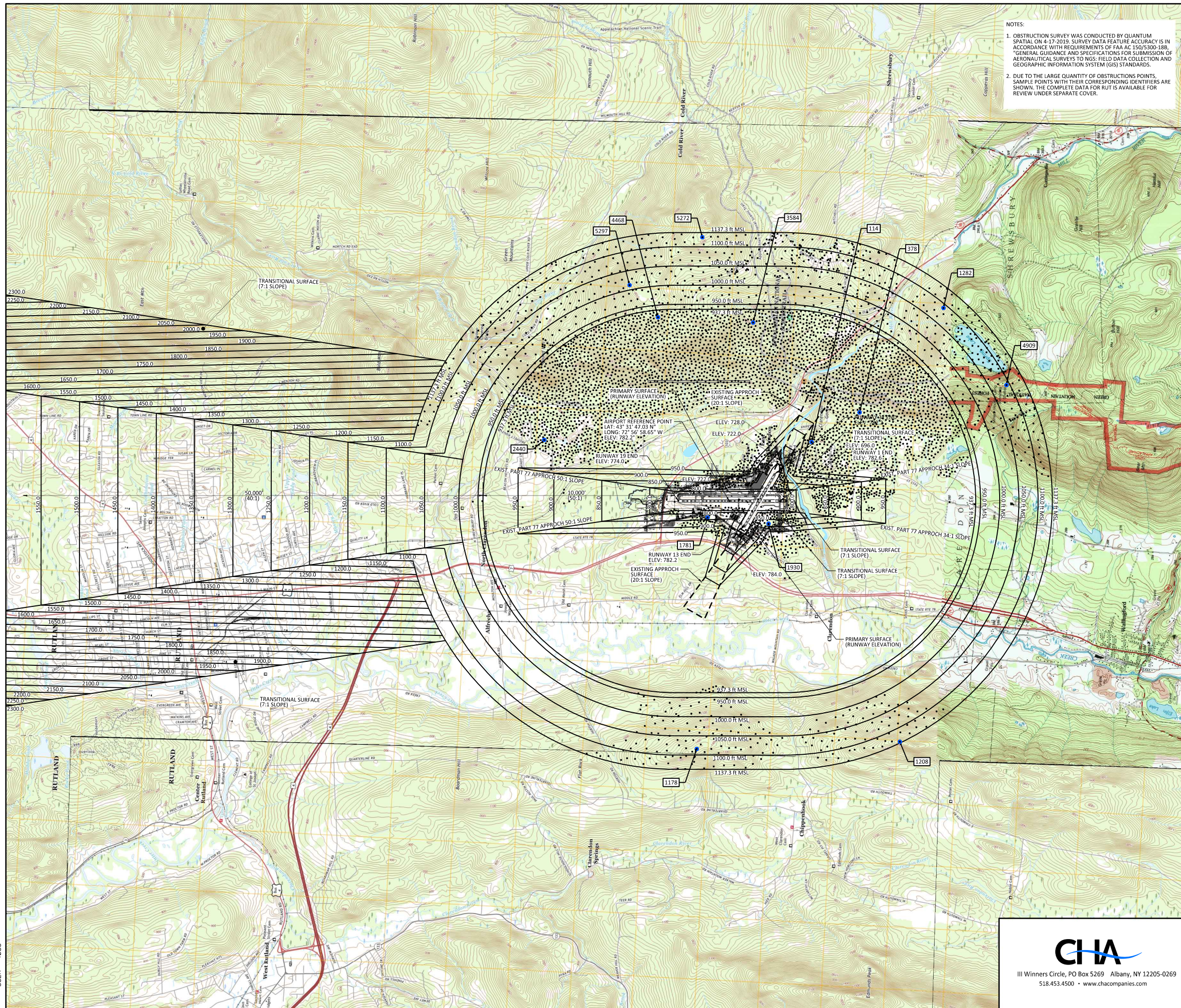
III Winners Circle, PO Box 5269 Albany, NY 12205-0269
 518.453.4500 • www.chacompanies.com

SPACE RESERVED FOR FAA APPROVAL

REVISIONS			
NO.	Description	Date	By

PROJECT NAME: AIRPORT LAYOUT PLAN
 PROJECT NUMBER: CLARENDON-AV-FY17-007
 FILE NAME: z16h171\Future Layout Plan.dgn PLOT DATE: 9/10/2021
 PROJECT LEADER: POM DRAWN BY: MED
 DESIGNED BY: CJK/AJF CHECKED BY: RTL
 FUTURE AIRPORT LAYOUT PLAN SHEET 4 OF 13

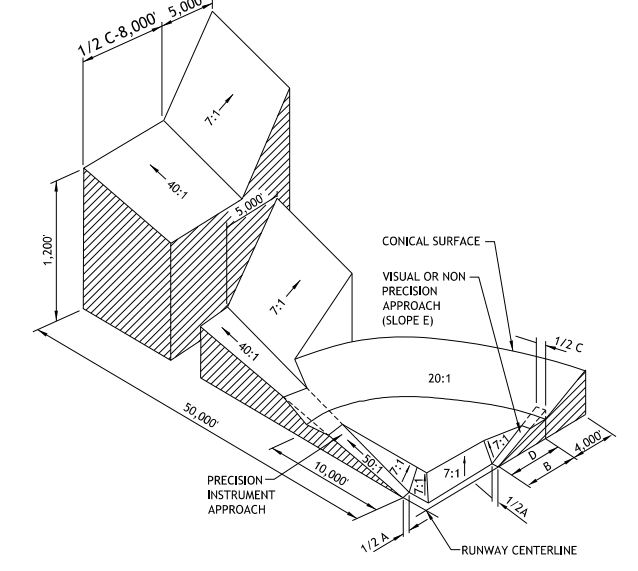
FILE NAME = \\P:\projects\ANY\K5_360865_CADD\MSTN16h171\Consultants\Aviation\z16h171_Airspace_Layout.dgn
 DATE/TIME = 9/10/2021 10:45:43 AM
 USER = 4066



NOTES:
 1. OBSTRUCTION SURVEY WAS CONDUCTED BY QUANTUM SPATIAL ON 4-17-2019. SURVEY DATA FEATURE ACCURACY IS IN ACCORDANCE WITH REQUIREMENTS OF FAA AC 150/5300-18B, GENERAL GUIDANCE AND SPECIFICATIONS FOR SUBMISSION OF AERONAUTICAL SURVEYS TO NGS: FIELD DATA COLLECTION AND GEOGRAPHIC INFORMATION SYSTEM (GIS) STANDARDS.
 2. DUE TO THE LARGE QUANTITY OF OBSTRUCTIONS POINTS, SAMPLE POINTS WITH THEIR CORRESPONDING IDENTIFIERS ARE SHOWN. THE COMPLETE DATA FOR RUT IS AVAILABLE FOR REVIEW UNDER SEPARATE COVER.

DIM	ITEM	VISUAL RUNWAY		NON-PRECISION INSTRUMENT RUNWAY			PRECISION INSTRUMENT RUNWAY
		A	B	A	B	D	
A	WIDTH OF PRIMARY SURFACE AND APPROACH SURFACE WIDTH AT INNER END	250	500	500	500	1,000	1,000
B	RADIUS OF HORIZONTAL SURFACE	5,000	5,000	5,000	10,000	10,000	10,000
C	APPROACH SURFACE WIDTH AT END	1,250	1,500	2,000	3,500	4,000	16,000
D	APPROACH SURFACE LENGTH	5,000	5,000	5,000	10,000	10,000	50,000*
E	APPROACH SLOPE	20:1	20:1	20:1	34:1	34:1	50:1 / 40:1*

A - UTILITY RUNWAYS
 B - RUNWAYS LARGER THAN UTILITY
 C - VISIBILITY MINIMUMS GREATER THAN 3/4 MILES
 D - VISIBILITY MINIMUMS AS LOW AS 3/4 MILE
 * - PRECISION INSTRUMENT APPROACH SLOPE IS 50:1 FOR INNER 10,000 FT. AND 40:1 FOR AN ADDITIONAL 40,000 FT.



PART 77 SAMPLE OBSTRUCTION POINTS					
PT#	OBJECT	OBJECT ELEV. (MSL)	P77 SURFACE	P77 SURFACE ELEV. (MSL)	P77 PENETRATION (FT)
114	TREE	996.6	HORIZONTAL	937.3	59.3
378	TREE	1132.4	HORIZONTAL	937.3	195.1
1178	ANTENNA	1542.5	CONICAL	1084.1	458.5
1208	TREE	1713.2	CONICAL	1134.1	579.1
1282	TREE	1537.7	CONICAL	1090.3	447.5
1781	TREE	865.9	TRANSITIONAL	833.6	32.2
1930	TREE	893.7	TRANSITIONAL	880.7	13
2440	TREE	1033.7	HORIZONTAL	937.3	96.4
3584	TREE	1665.8	HORIZONTAL	937.3	728.5
4468	TREE	2135.5	HORIZONTAL	937.3	1198.2
4909	TREE	1872.3	CONICAL	1091.6	780.7
5272	TREE	2400.2	CONICAL	1125.1	1275.1
5297	TREE	2152.2	CONICAL	1012.3	1139.9

LEGEND

- PART 77 SAMPLE OBSTRUCTION POINT
- * OBSTRUCTION POINT

DECLINATION: 13° 48' W ± 0" 23'
 CHANGING BY 0" 4" E/YEAR
 ON AUGUST 2021

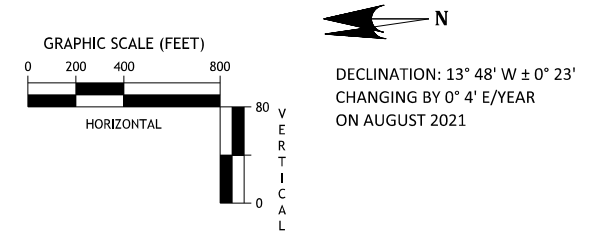
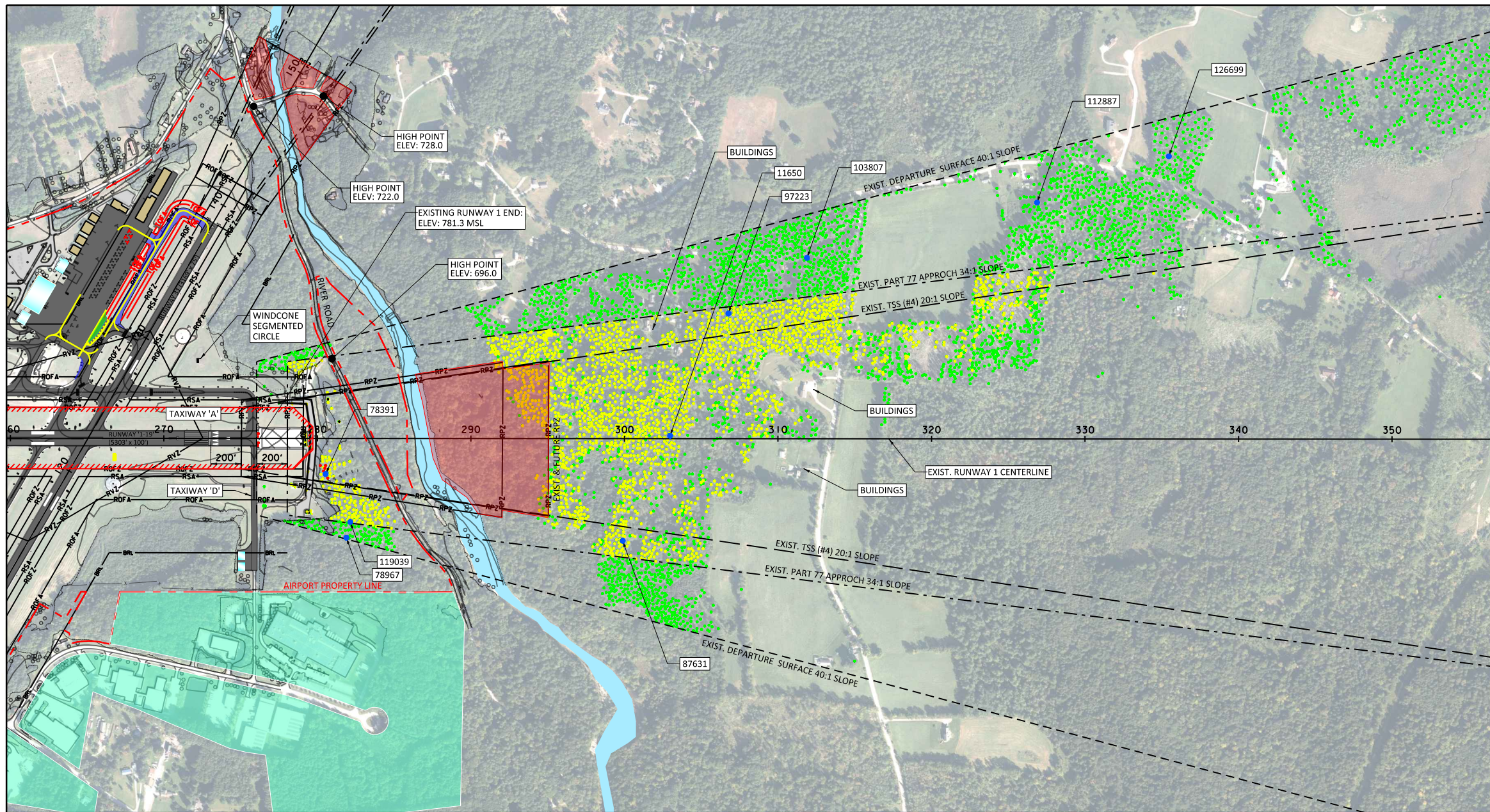
0 2500 5000
 SCALE IN FEET

REVISIONS			
NO.	Description	Date	By

CHIA
 III Winners Circle, PO Box 5269 Albany, NY 12205-0269
 518.453.4500 • www.chacompanies.com

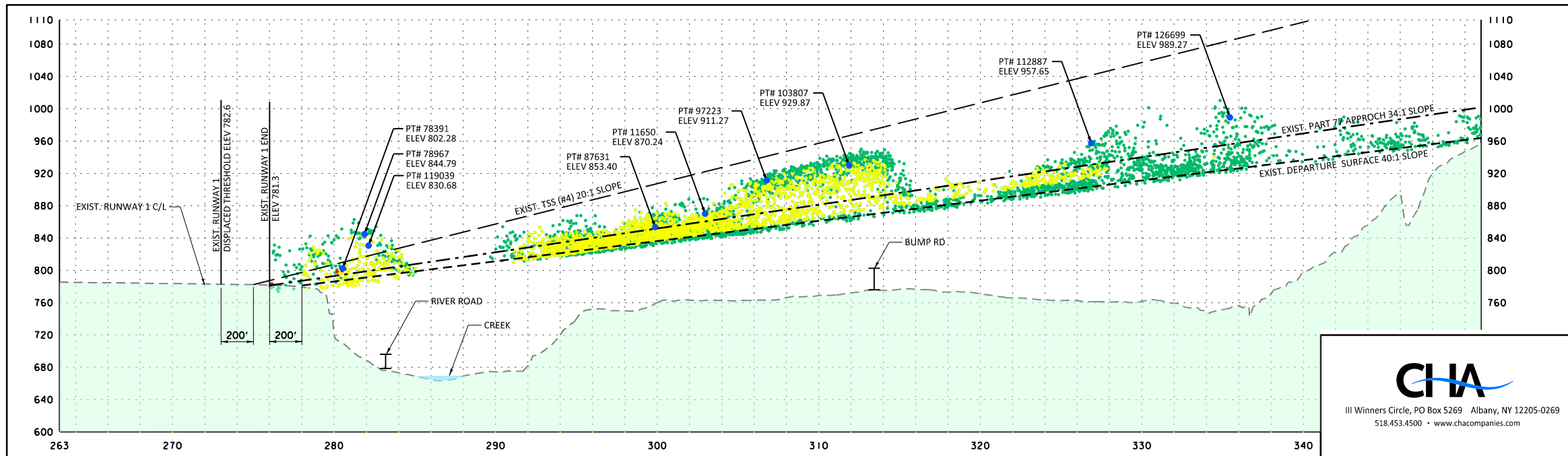
PROJECT NAME: AIRPORT LAYOUT PLAN
 PROJECT NUMBER: CLARENDON-AV-FY17-007
 FILE NAME: z16h171_Airspace_Layout.dgn
 PROJECT LEADER: POM
 DESIGNED BY: CJK/AJF
 AIRPORT AIRSPACE LAYOUT PLAN

PLOT DATE: 9/10/2021
 DRAWN BY: MED
 CHECKED BY: RTL
 SHEET 5 OF 13



- LEGEND**
- EX. BUILDING
 - EX. AIRFIELD PAVEMENT
 - BUILDING IMPROVEMENTS
 - BUILDING REMOVAL
 - FUTURE AVIGATION EASEMENTS
 - AIRFIELD PAVEMENT
 - AIRFIELD PAVEMENT REMOVAL
 - 800 ELEVATION CONTOURS
 - TREELINES
 - CREEK / WATERWAY
 - RVZ RUNWAY VISIBILITY ZONE (RVZ)
 - ROFZ RUNWAY OBSTACLE FREE ZONE (ROFZ)
 - RPZ RUNWAY PROTECTION ZONE (RPZ)
 - RSA RUNWAY SAFETY AREA (RSA)
 - ROFA RUNWAY OBJECT FREE AREA (ROFA)
 - BRL 35' BUILDING RESTRICTION LINE (BRL)
 - TOFA TAXIWAY OBJECT FREE AREA (TOFA)
 - TSS THRESHOLD SITING SURFACE (TSS)
 - EX. AIRPORT PROPERTY LINE
 - EX. FENCE LINE
 - SURVEY MARKER
 - TREE PENETRATION
 - APPROACH, THRESHOLD SITING SURFACE (TSS), OBSTRUCTIONS
 - APPROACH, PART 77, OBSTRUCTIONS
 - DEPARTURE SURFACE OBSTRUCTIONS
 - SAMPLE OBSTRUCTION POINT
 - GROUND PENETRATION
 - ROAD + VEHICLE HEIGH (10' PRIVATE /15' PUBLIC)

- NOTES:**
1. OBSTRUCTION SURVEY WAS CONDUCTED BY QUANTUM SPATIAL ON 4-17-2019. SURVEY DATA FEATURE ACCURACY IS IN ACCORDANCE WITH REQUIREMENTS OF FAA AC 150/5300-18B, "GENERAL GUIDANCE AND SPECIFICATIONS FOR SUBMISSION OF AERONAUTICAL SURVEYS TO NGS: FIELD DATA COLLECTION AND GEOGRAPHIC INFORMATION SYSTEM (GIS) STANDARDS."
 2. DUE TO THE LARGE QUANTITY OF OBSTRUCTIONS POINTS, SAMPLE POINTS WITH THEIR CORRESPONDING IDENTIFIERS ARE SHOWN. THE COMPLETE DATA FOR THIS RUNWAY IS AVAILABLE FOR REVIEW UNDER SEPARATE COVER. THE PENETRATING OBSTRUCTIONS ARE IDENTIFIED IN THE DATA OBSTRUCTION TABLES ON SHEET 10.
 3. ROADWAY ELEVATIONS INCLUDE THE FAR PART 77 TRAVERSE WAY ADJUSTMENT.



REVISIONS

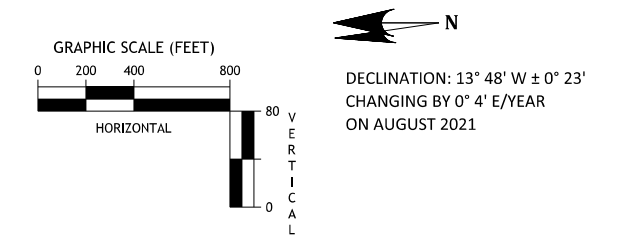
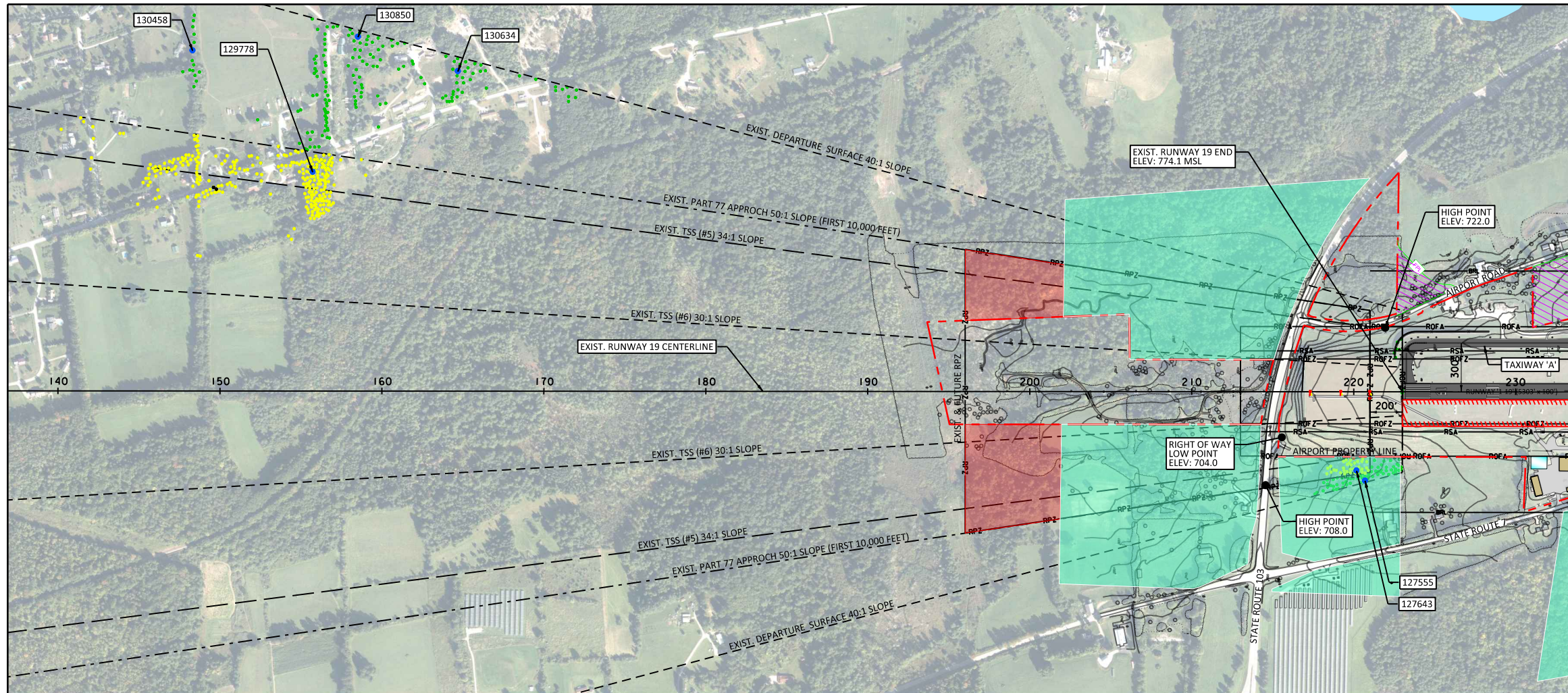
NO.	Description	Date	By



PROJECT NAME: AIRPORT LAYOUT PLAN
 PROJECT NUMBER: CLARENDON-AV-FY17-007

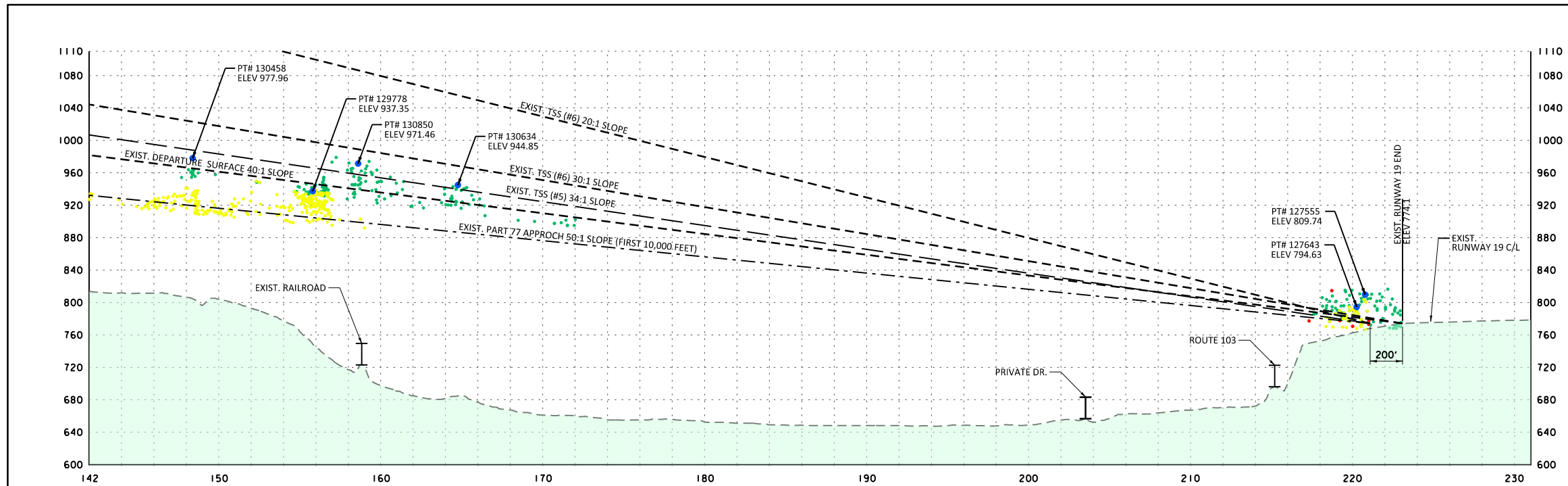
FILE NAME: z16h171.RUNWAY 1 INNER.dgn PLOT DATE: 9/10/2021
 PROJECT LEADER: POM DRAWN BY: MED
 DESIGNED BY: CJK/AJF CHECKED BY: RTL
 RUNWAY 1 INNER PORTION OF APPROACH SURFACE SHEET 6 OF 13

FILE NAME: N:\p\projects\AV\NY\K5_360865.CADD\MSTIN16h171\Consult\lanta\Avr\station\z16h171.RUNWAY 1 INNER.dgn
 DATE/TIME USER = 9/10/2021 4066



- ### LEGEND
- EX. BUILDING
 - EX. AIRFIELD PAVEMENT
 - BUILDING IMPROVEMENTS
 - BUILDING REMOVAL
 - AIRFIELD PAVEMENT
 - AIRFIELD PAVEMENT REMOVAL
 - FUTURE AVIGATION EASEMENTS
 - 800 ELEVATION CONTOURS
 - TREELINES
 - CREEK / WATERWAY
 - RVZ RUNWAY VISIBILITY ZONE (RVZ)
 - ROFZ RUNWAY OBSTACLE FREE ZONE (ROFZ)
 - RPZ RUNWAY PROTECTION ZONE (RPZ)
 - RSA RUNWAY SAFETY AREA (RSA)
 - ROFA RUNWAY OBJECT FREE AREA (ROFA)
 - BRL 35' BUILDING RESTRICTION LINE (BRL)
 - TOFA TAXIWAY OBJECT FREE AREA (TOFA)
 - FPL FUTURE PROPERTY LINE
 - PART 77 APPROACH SURFACE
 - THRESHOLD SITING SURFACE (TSS)
 - EX. AIRPORT PROPERTY LINE
 - EX. FENCE LINE
 - SURVEY MARKER
 - TREE PENETRATION
 - APPROACH, THRESHOLD SITING SURFACE (TSS), OBSTRUCTIONS
 - APPROACH, PART 77, OBSTRUCTIONS
 - DEPARTURE SURFACE OBSTRUCTIONS
 - SAMPLE OBSTRUCTION POINT
 - GROUND PENETRATION
 - ROAD + VEHICLE HEIGHT (10' PRIVATE /15' PUBLIC)

- NOTES:**
1. OBSTRUCTION SURVEY WAS CONDUCTED BY QUANTUM SPATIAL ON 4-17-2019. SURVEY DATA FEATURE ACCURACY IS IN ACCORDANCE WITH REQUIREMENTS OF FAA AC 150/5300-18B, "GENERAL GUIDANCE AND SPECIFICATIONS FOR SUBMISSION OF AERONAUTICAL SURVEYS TO NGS: FIELD DATA COLLECTION AND GEOGRAPHIC INFORMATION SYSTEM (GIS) STANDARDS."
 2. DUE TO THE LARGE QUANTITY OF OBSTRUCTIONS POINTS, SAMPLE POINTS WITH THEIR CORRESPONDING IDENTIFIERS ARE SHOWN. THE COMPLETE DATA FOR THIS RUNWAY IS AVAILABLE FOR REVIEW UNDER SEPARATE COVER. THE PENETRATING OBSTRUCTIONS ARE IDENTIFIED IN THE DATA OBSTRUCTION TABLES ON SHEET 10.
 3. ROADWAY ELEVATIONS INCLUDE THE FAR PART 77 TRAVERSE WAY ADJUSTMENT.



REVISIONS			
NO.	Description	Date	By

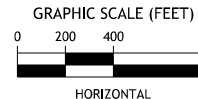
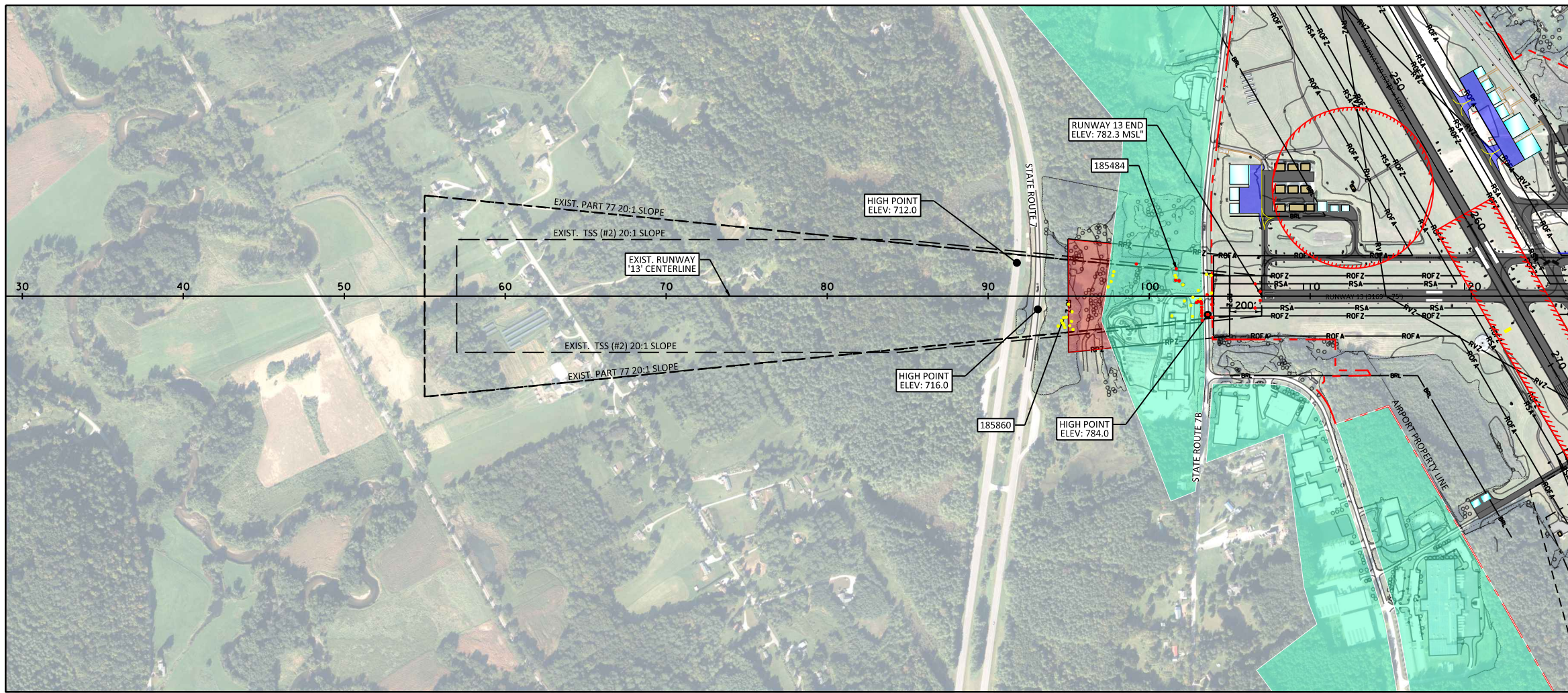
CHIA

III Winners Circle, PO Box 5269 Albany, NY 12205-0269
518.453.4500 • www.chiacompanies.com

PROJECT NAME: AIRPORT LAYOUT PLAN
PROJECT NUMBER: CLARENDON-AV-FY17-007

FILE NAME: z16h171_RUNWAY 19 INNER.dgn PLOT DATE: 9/10/2021
PROJECT LEADER: POM DRAWN BY: MED
DESIGNED BY: CJK/AJF CHECKED BY: RTL
RUNWAY 19 INNER PORTION OF APPROACH SURFACE SHEET 7 OF 13

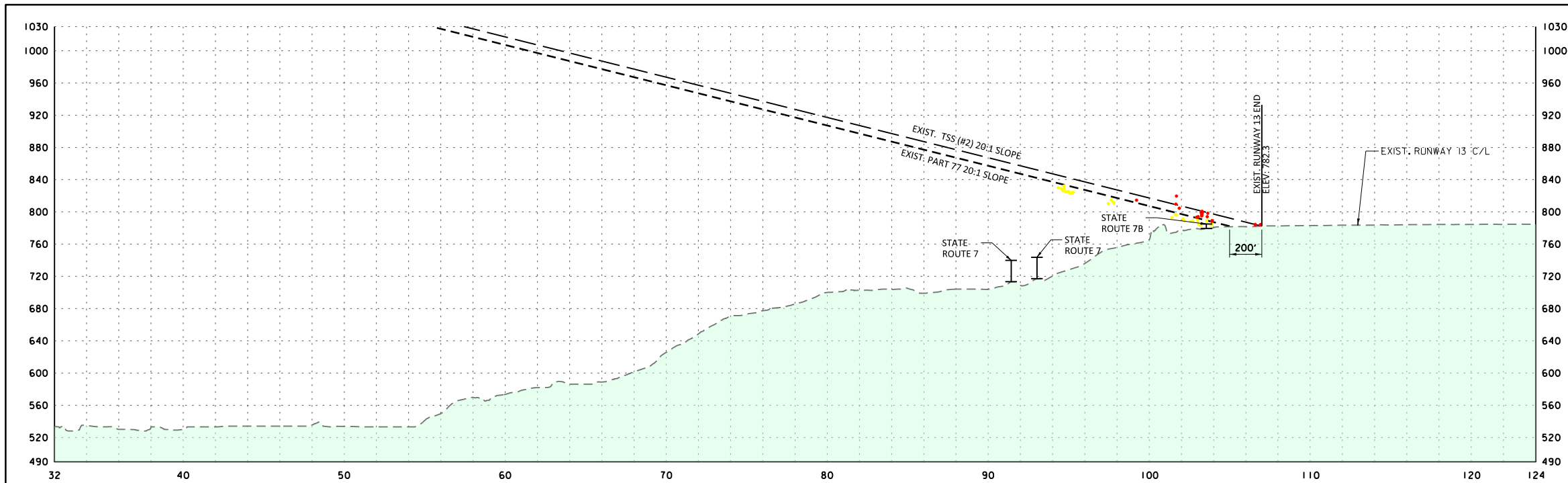
FILE NAME: \\s:\projects\AV\NY\K5_36086\CAID\MSTIN16h171\Consult\Avr\Avr\z16h171_RUNWAY 19 INNER.dgn
DATE/TIME: 9/10/2021 10:46:43 AM
USER: CJK



DECLINATION: 13° 48' W ± 0° 23'
CHANGING BY 0° 4' E/YEAR
ON AUGUST 2021

LEGEND

- EX. BUILDING
- EX. AIRFIELD PAVEMENT
- BUILDING IMPROVEMENTS
- BUILDING REMOVAL
- AIRFIELD PAVEMENT
- AIRFIELD PAVEMENT REMOVAL
- FUTURE AVIGATION EASEMENTS
- 800 ELEVATION CONTOURS
- TREELINES
- CREEK / WATERWAY
- RVZ RUNWAY VISIBILITY ZONE (RVZ)
- ROFZ RUNWAY OBSTACLE FREE ZONE (ROFZ)
- RPZ RUNWAY PROTECTION ZONE (RPZ)
- RSA RUNWAY SAFETY AREA (RSA)
- ROFA RUNWAY OBJECT FREE AREA (ROFA)
- BRL 35' BUILDING RESTRICTION LINE (BRL)
- TOFA TAXIWAY OBJECT FREE AREA (TOFA)
- PART 77 APPROACH SURFACE
- THRESHOLD SITING SURFACE (TSS)
- EX. AIRPORT PROPERTY LINE
- EX. FENCE LINE
- SURVEY MARKER
- TREE PENETRATION
- APPROACH, THRESHOLD SITING SURFACE (TSS), OBSTRUCTIONS
- APPROACH, PART 77, OBSTRUCTIONS
- DEPARTURE SURFACE OBSTRUCTIONS
- SAMPLE OBSTRUCTION POINT
- GROUND PENETRATION
- ROAD + VEHICLE HEIGHT (10' PRIVATE /15' PUBLIC)



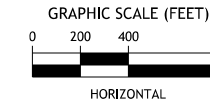
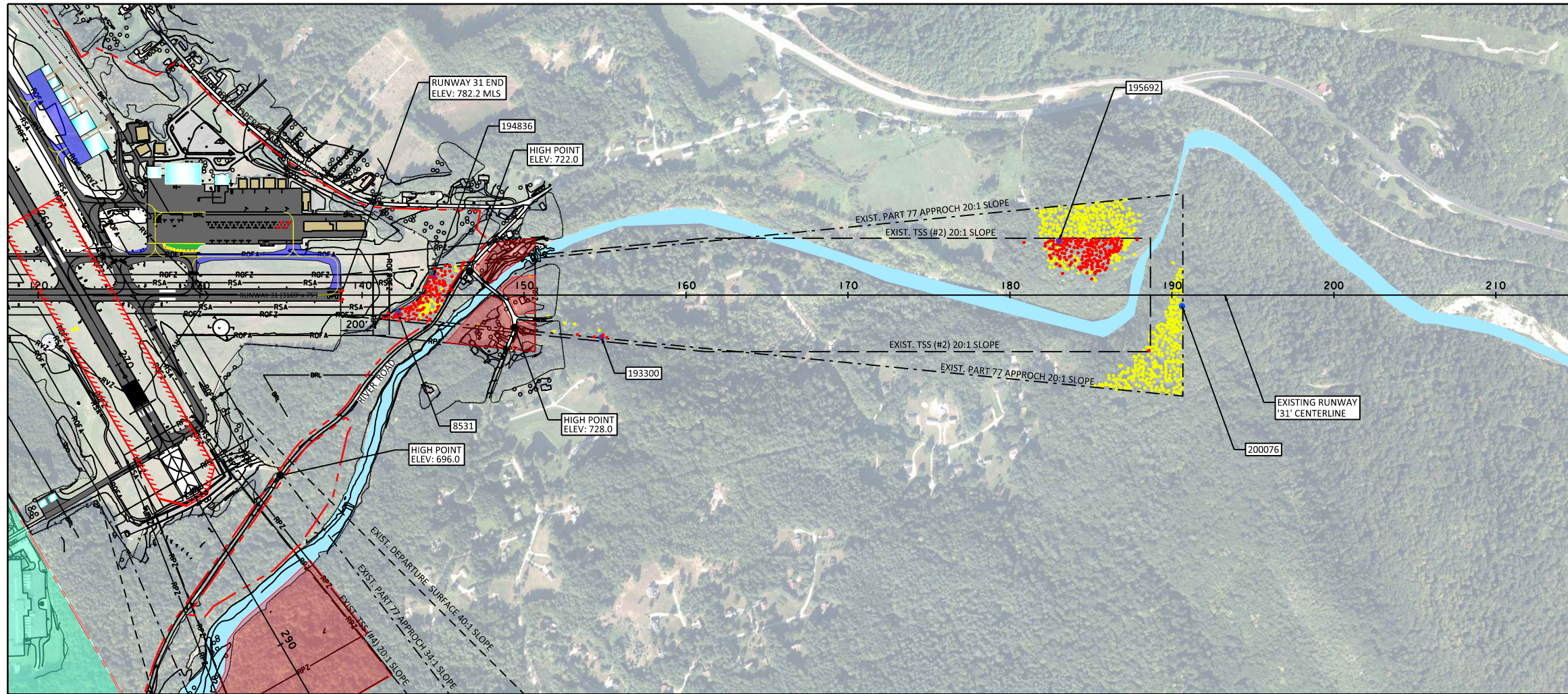
- NOTES:**
1. OBSTRUCTION SURVEY WAS CONDUCTED BY QUANTUM SPATIAL ON 4-17-2019. SURVEY DATA FEATURE ACCURACY IS IN ACCORDANCE WITH REQUIREMENTS OF FAA AC 150/5300-10B, "GENERAL GUIDANCE AND SPECIFICATIONS FOR SUBMISSION OF AERONAUTICAL SURVEYS TO NGS: FIELD DATA COLLECTION AND GEOGRAPHIC INFORMATION SYSTEM (GIS) STANDARDS.
 2. DUE TO THE LARGE QUANTITY OF OBSTRUCTIONS POINTS, SAMPLE POINTS WITH THEIR CORRESPONDING IDENTIFIERS ARE SHOWN. THE COMPLETE DATA FOR THIS RUNWAY IS AVAILABLE FOR REVIEW UNDER SEPARATE COVER. THE PENETRATING OBSTRUCTIONS ARE IDENTIFIED IN THE DATA OBSTRUCTION TABLES ON SHEET 10.
 3. ROADWAY ELEVATIONS INCLUDE THE FAR PART 77 TRAVERSE WAY ADJUSTMENT.

REVISIONS

NO.	Description	Date	By

FILE NAME = \\p:\projects\AV\NY\KES\36086\CAADD\MSTIN16h171\Consult\mnts\z16h171_RUNWAY_13_INNER.dgn
DATE/TIME = 9/10/2021 10:00:00
USER = 4066

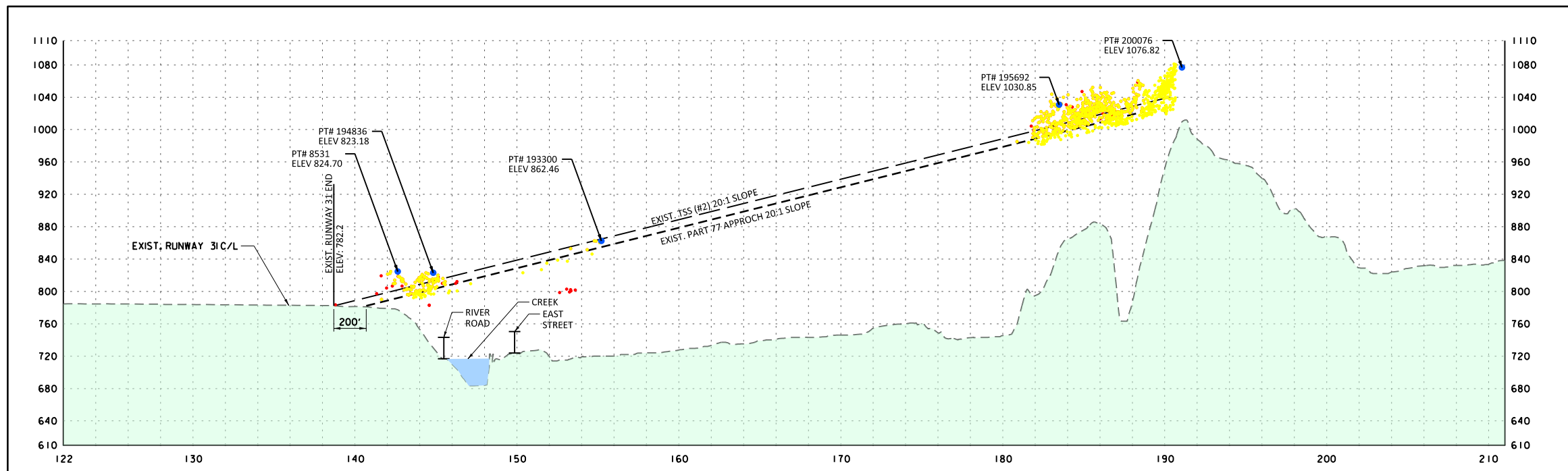
PROJECT NAME: AIRPORT LAYOUT PLAN
PROJECT NUMBER: CLARENDON-AV-FY17-007
FILE NAME: z16h171_RUNWAY 13 INNER.dgn PLOT DATE: 9/10/2021
PROJECT LEADER: POM DRAWN BY: MED
DESIGNED BY: CJK/AJF CHECKED BY: RTL
RUNWAY 13 INNER PORTION OF APPROACH SURFACE SHEET 8 OF 13



DECLINATION: 13° 48' W ± 0° 23'
 CHANGING BY 0° 4' E/YEAR
 ON AUGUST 2021

LEGEND

- EX. BUILDING
- EX. AIRFIELD PAVEMENT
- BUILDING IMPROVEMENTS
- BUILDING REMOVAL
- AIRFIELD PAVEMENT
- AIRFIELD PAVEMENT REMOVAL
- FUTURE AVIGATION EASEMENTS
- 800 ELEVATION CONTOURS
- TREELINES
- CREEK / WATERWAY
- RUNWAY VISIBILITY ZONE (RVZ)
- RUNWAY OBSTACLE FREE ZONE (ROFZ)
- RUNWAY PROTECTION ZONE (RPZ)
- RUNWAY SAFETY AREA (RSA)
- RUNWAY OBJECT FREE AREA (ROFA)
- 35' BUILDING RESTRICTION LINE (BRL)
- TAXIWAY OBJECT FREE AREA (TOFA)
- PART 77 APPROACH SURFACE
- THRESHOLD SITING SURFACE (TSS)
- EX. AIRPORT PROPERTY LINE
- EX. FENCE LINE
- SURVEY MARKER
- TREE PENETRATION
- APPROACH THRESHOLD SITING SURFACE (TSS), OBSTRUCTIONS
- APPROACH PART 77 OBSTRUCTIONS
- DEPARTURE SURFACE OBSTRUCTIONS
- SAMPLE OBSTRUCTION POINT
- GROUND PENETRATION
- ROAD + VEHICLE HEIGH (10' PRIVATE / 15' PUBLIC)



- NOTES:**
- OBSTRUCTION SURVEY WAS CONDUCTED BY QUANTUM SPATIAL ON 4-17-2019. SURVEY DATA FEATURE ACCURACY IS IN ACCORDANCE WITH REQUIREMENTS OF FAA AC 150/5300-10B, "GENERAL GUIDANCE AND SPECIFICATIONS FOR SUBMISSION OF AERONAUTICAL SURVEYS TO NGS: FIELD DATA COLLECTION AND GEOGRAPHIC INFORMATION SYSTEM (GIS) STANDARDS."
 - DUE TO THE LARGE QUANTITY OF OBSTRUCTIONS POINTS, SAMPLE POINTS WITH THEIR CORRESPONDING IDENTIFIERS ARE SHOWN. THE COMPLETE DATA FOR THIS RUNWAY IS AVAILABLE FOR REVIEW UNDER SEPARATE COVER. THE PENETRATING OBSTRUCTIONS ARE IDENTIFIED IN THE DATA OBSTRUCTION TABLES ON SHEET 10.
 - ROADWAY ELEVATIONS INCLUDE THE FAR PART 77 TRAVERSE WAY ADJUSTMENT.

REVISIONS			
NO.	Description	Date	By

FILE NAME = N:\Projects\ANY\K5_36085\CAADD\MSTIN16h171\Consult\mnts\Aviation\z16h171_RUNWAY_31_INNER.dgn
 DATE/TIME = 9/10/2021 10:40:00
 USER = 4066



PROJECT NAME: AIRPORT LAYOUT PLAN
 PROJECT NUMBER: CLARENDON-AV-FY17-007
 FILE NAME: z16h171_RUNWAY 31INNER.dgn PLOT DATE: 9/10/2021
 PROJECT LEADER: POM DRAWN BY: MED
 DESIGNED BY: CJK/AJF CHECKED BY: RTL
 RUNWAY 31INNER PORTION OF APPROACH SURFACE SHEET 9 OF 13

RUNWAY 1												
PT#	OBJECT	OBJ. ELEV	PART 77 APPROACH 34:1		OBSTACLE CLEARANCE SURFACE 20 :1 (#4)		DEPARTURE SURFACE 40:1		EASTING	NORTHING	TRIGGERING EVENT	DISPOSITION
			PART 77 ELEV.	PENETRATION (FT.)	OCS #4 ELEV.	PENETRATION (FT.)	DEP ELEV.	PENETRATION (FT.)				
78391	TREE	802.283	788.59	14	808.686	-6	792.494	10	1520981.25	373105.684	EXISTING COND.	
11650	TREE	870.238	854.578	16			848.584	22	1521276.763	370867.603	EXISTING COND.	
119039	TREE	830.676	793.31	37			796.506	34	1520672.007	372938.887	EXISTING COND.	
97223	TREE	911.268	865.736	46			858.068	53	1522081.616	370504.452	EXISTING COND.	
87631	TREE	853.404	845.507	8			840.874	13	1520586.609	371162.106	EXISTING COND.	
78967	TREE	844.787		-			795.875	49	1520569.249	372962.071	EXISTING COND.	
103807	TREE	929.873		-			870.859	59	1522454.301	370000.247	EXISTING COND.	
112887	TREE	957.647		-			908.311	49	1522845.967	368509.783	EXISTING COND.	
126699	TREE	989.272		-			929.773	59	1523165.095	367657.573	EXISTING COND.	

- object is outside the limits of the surface

RUNWAY 19												
PT#	OBJECT	OBJ. ELEV	PART 77 APPROACH 50:1		OBSTACLE CLEARANCE SURFACE 34 :1 (#5)		DEPARTURE SURFACE 40:1		EASTING	NORTHING	TRIGGERING EVENT	DISPOSITION
			PART 77 ELEV.	PENETRATION (FT.)	OCS #5 ELEV.	PENETRATION (FT.)	DEP ELEV.	PENETRATION (FT.)				
127643	TREE	794.634	775.666	19			781.08	14	1520601.933	379134.24	EXISTING COND.	
127555	TREE	809.737		-			779.782	30	1520541.051	379081.049	EXISTING COND.	
130634	TREE	944.854		-			919.836	25	1522951.303	384733.17	EXISTING COND.	
130850	TREE	971.459		-			935.257	36	1523150.82	385354.156	EXISTING COND.	
129778	TREE	937.346	904.592	33			942.239	-5	1522311.487	385616.496	EXISTING COND.	
130458	TREE	977.957		-			960.796	17	1523045.33	386373.791	EXISTING COND.	
	STATE ROUTE 102 (CENTERLINE)	711	785.8	-75	791.2	-80	793.3	-82	1521055.869	379653.343	EXISTING COND.	
	STATE ROUTE 102 (HIGH POINT)	723		-			795.1	-72	1520363.508	379705.317	EXISTING COND.	

- object is outside the limits of the surface

RUNWAY 13										
PT#	OBJECT	OBJ. ELEV	PART 77 APPROACH 20:1		OBSTACLE CLEARANCE SURFACE 20 :1 (#2)		EASTING	NORTHING	TRIGGERING EVENT	DISPOSITION
			PART 77 ELEV.	PENETRATION (FT.)	OCS #2 ELEV.	PENETRATION (FT.)				
185484	TREE	819.59		-	808.841	11	1519446.026	375811.763	EXISTING COND.	
185860	TREE	832.076	833.776	-2			1518687.521	375884.06	EXISTING COND.	
	STATE ROUTE 7B (CENTERLINE)	794	789	5	799	-5	1519535.497	375577.475	EXISTING COND.	
	STATE ROUTE 7B (HIGH POINT)	798	789	9	799	-1	1519479.07	375468.082	EXISTING COND.	

- object is outside the limits of the surface


RUNWAY 31										
PT#	OBJECT	OBJ. ELEV	PART 77 APPROACH 20:1		OBSTACLE CLEARANCE SURFACE 20 :1 (#2)		EASTING	NORTHING	TRIGGERING EVENT	DISPOSITION
			PART 77 ELEV.	PENETRATION (FT.)	OCS #2 ELEV.	PENETRATION (FT.)				
8531	TREE	824.697	789.766	35	799.766	25	1522857.721	373608.513	EXISTING COND.	
194836	TREE	823.177	800.709	22	810.709	12	1523157.287	373697.884	EXISTING COND.	
193300	TREE	862.462	852.643	10	862.643	0	1523883.322	372864.593	EXISTING COND.	
195692	TREE	1030.85	993.916	37	1003.916	27	1526645.234	372020.251	EXISTING COND.	
200076	TREE	1076.819	1031.871	45			1527112.928	371297.564	EXISTING COND.	
197340	TREE	1048.973	1005.988	43			1526887.543	371959.482	EXISTING COND.	
	EAST ST. (CENTERLINE)	737	821.7	-85	831.7	-95	1523457.081	373402.11	EXISTING COND.	
	EAST ST. (HIGH POINT)	741	725.7	15	835.7	-95	1523496.241	373213.005	EXISTING COND.	

- object is outside the limits of the surface

NOTES:

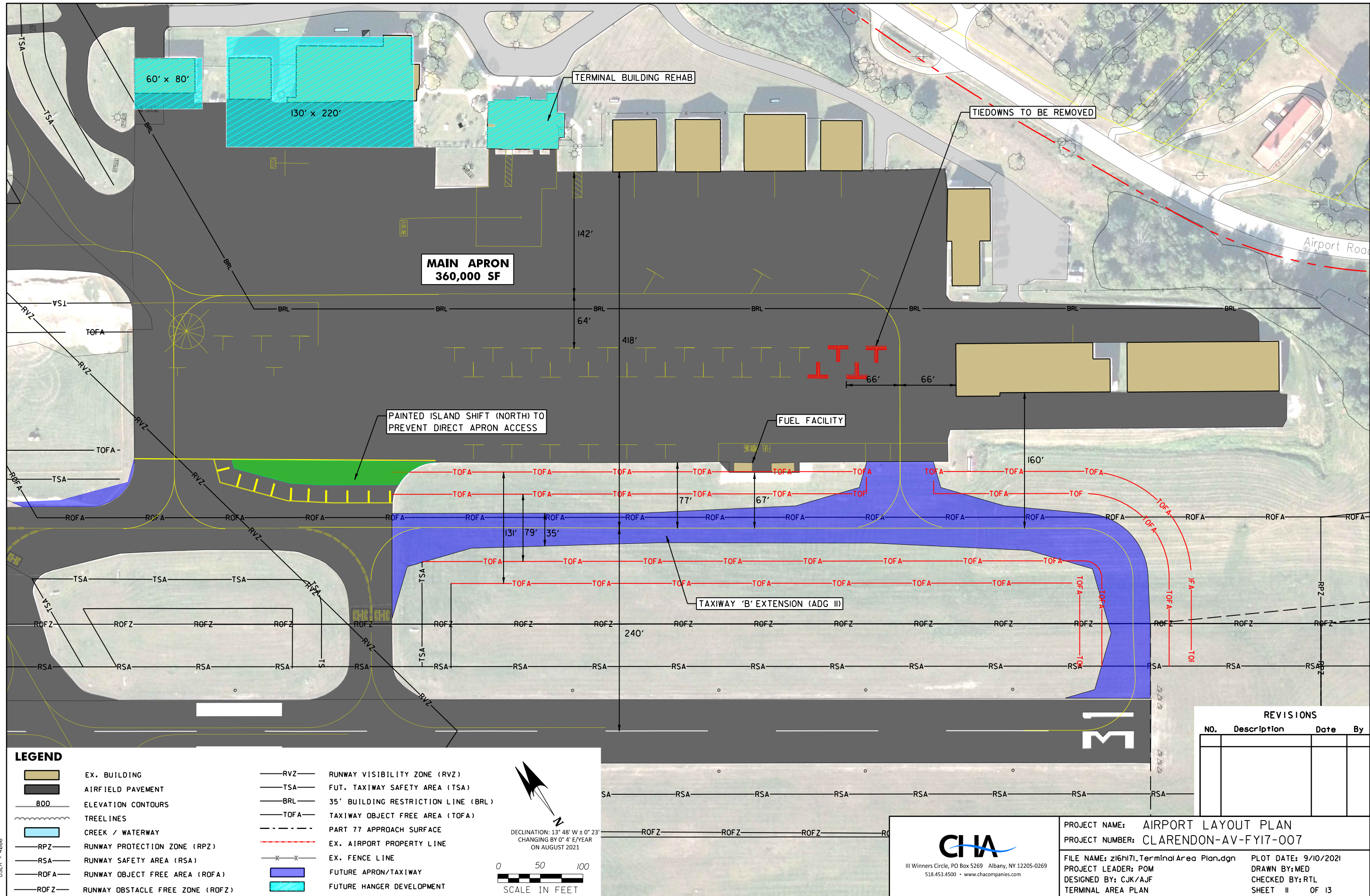
- OBSTRUCTION SURVEY WAS CONDUCTED BY QUANTUM SPATIAL ON 4-17-2019. SURVEY DATA FEATURE ACCURACY IS IN ACCORDANCE WITH REQUIREMENTS OF FAA AC 150/5300-18B, "GENERAL GUIDANCE AND SPECIFICATIONS FOR SUBMISSION OF AERONAUTICAL SURVEYS TO NGS: FIELD DATA COLLECTION AND GEOGRAPHIC INFORMATION SYSTEM (GIS) STANDARDS.
- DUE TO THE LARGE QUANTITY OF OBSTRUCTIONS POINTS, SAMPLE POINTS WITH THEIR CORRESPONDING IDENTIFIERS ARE SHOWN. THE COMPLETE DATA FOR THIS RUNWAY IS AVAILABLE FOR REVIEW UNDER SEPARATE COVER.
- ROADWAY ELEVATIONS NOT INCLUDED AS PART OF THE OBSTRUCTION SURVEY DATA WERE GENERATED FROM GROUND CONTOUR ELEVATIONS. ROADWAY ELEVATIONS INCLUDE THE FAR PART 77 TRAVERSE WAY ADJUSTMENT.

REVISIONS			
NO.	Description	Date	By

 <small>111 Winners Circle, PO Box 5269 Albany, NY 12205-0269 518.453.4500 • www.chacompanies.com</small>	PROJECT NAME: AIRPORT LAYOUT PLAN
	PROJECT NUMBER: CLARENDON-AV-FY17-007
FILE NAME: z16h171.Obstruction.data.dgn	PLOT DATE: 9/10/2021
PROJECT LEADER: POM	DRAWN BY: MED
DESIGNED BY: CJK/AJF	CHECKED BY: RTL
OBSTRUCTION DATA SHEET	SHEET 10 OF 13

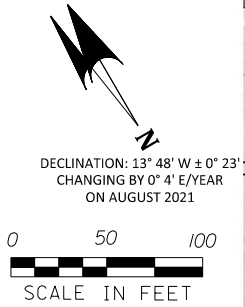
FILE NAME: z16h171.Obstruction.data.dgn DATE/TIME: 9/10/2021 10:46:56 USER: rjg

FILE NAME: N:\Projects\AV\NY\K5_36086\CADD\MSTN16h171\Consultants\Aviation\z16h171_Terminal Area Plan.dgn
 DATE/TIME: 9/10/2021
 USER: 4066



LEGEND

	EX. BUILDING		RVZ	RUNWAY VISIBILITY ZONE (RVZ)
	AIRFIELD PAVEMENT		TSA	FUT. TAXIWAY SAFETY AREA (TSA)
	ELEVATION CONTOURS		BRL	35' BUILDING RESTRICTION LINE (BRL)
	TREELINES		TOFA	TAXIWAY OBJECT FREE AREA (TOFA)
	CREEK / WATERWAY		Part 77	PART 77 APPROACH SURFACE
	RPZ		EX. AIRPORT	EX. AIRPORT PROPERTY LINE
	RSA		EX. FENCE	EX. FENCE LINE
	ROFA		FUTURE APRON/TAXIWAY	FUTURE APRON/TAXIWAY
	ROFZ		FUTURE HANGER DEVELOPMENT	FUTURE HANGER DEVELOPMENT



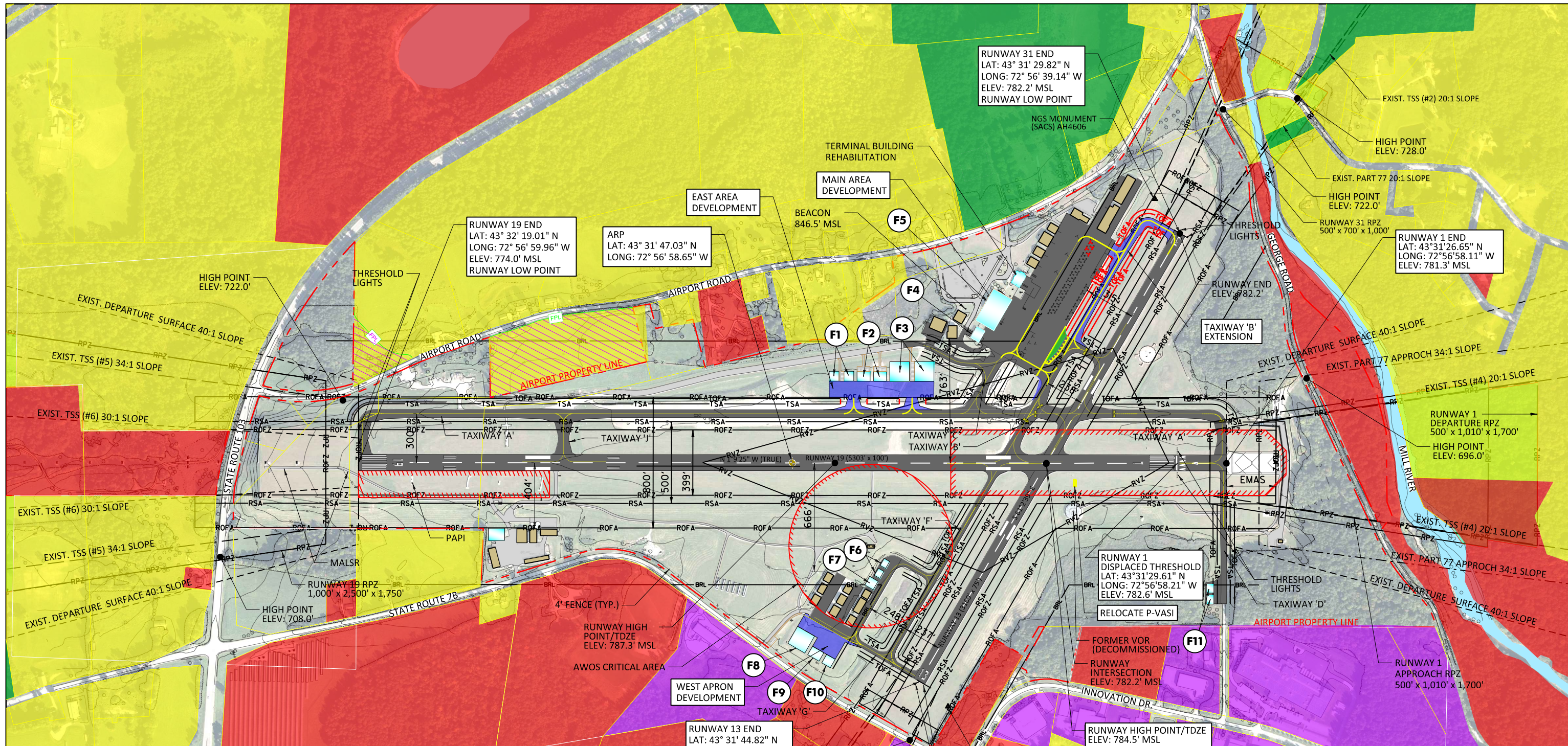
REVISIONS

NO.	Description	Date	By

CHIA
 111 Winners Circle, PO Box 5269 Albany, NY 12205-0269
 518.453.4500 • www.chacompanies.com

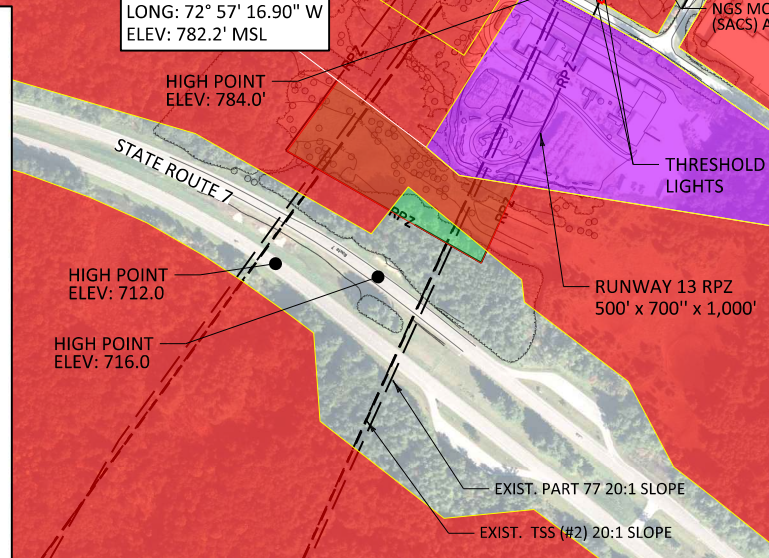
PROJECT NAME: AIRPORT LAYOUT PLAN
 PROJECT NUMBER: CLARENDON-AV-FY17-007
 FILE NAME: z16h171_Terminal Area Plan.dgn
 PROJECT LEADER: POM
 DESIGNED BY: CJK/AJF
 TERMINAL AREA PLAN
 PLOT DATE: 9/10/2021
 DRAWN BY: MED
 CHECKED BY: RTL
 SHEET II OF 13

FILE NAME = N:\Projects\AV\NY\KES_360865\CADD\MSTIN\16h171\Consultants\Aviation\z16h171.Land UsePlan.dgn
 DATE/TIME = 9/10/2021
 USER = 4066



LEGEND

	EX. BUILDING		N
	AIRFIELD PAVEMENT		0 300 600
	CREEK / WATERWAY		DECLINATION: 13° 48' W ± 0° 23' CHANGING BY 0° 4' E/YEAR ON AUGUST 2021
	COMMERCIAL		SCALE IN FEET
	INDUSTRIAL		PARCEL LINE
	OPEN AREAS		PART 77 APPROACH SURFACE
	RESIDENTIAL		THRESHOLD SITING SURFACE (TSS)
	ELEVATION CONTOURS		EX. AIRPORT PROPERTY LINE
	TREELINES		EX. FENCE LINE
	RUNWAY PROTECTION ZONE (RPZ)		SURVEY MARKER
	RUNWAY SAFETY AREA (RSA)		AIRPORT REFERENCE POINT (ARP)
	RUNWAY OBJECT FREE AREA (ROFA)		EX. WINDCONE
	RUNWAY OBSTACLE FREE ZONE (ROFZ)		FUTURE HANGER DEVELOPMENT
	RUNWAY VISIBILITY ZONE (RVZ)		FUTURE APRON/TAXIWAY
	TAXIWAY SAFETY AREA (TSA)		PAVEMENT/BUILDING REMOVAL
	35' BUILDING RESTRICTION LINE (BRL)		FUTURE PROPERTY LINE
	TAXIWAY OBJECT FREE AREA (TOFA)		FUTURE TAXIWAY/TAXILANE
			OBJECT FREE AREA/SAFETY AREA
			FUTURE PROPERTY ACQUISITION



VERMONT AGENCY OF TRANSPORTATION

APPROVED:

Daniel DeLabriere
RAIL AND AVIATION BUREAU DIRECTOR

DATE _____

SPACE RESERVED FOR FAA APPROVAL

REVISIONS			
NO.	Description	Date	By

PROJECT NAME: AIRPORT LAYOUT PLAN
PROJECT NUMBER: CLARENDON-AV-FY17-007

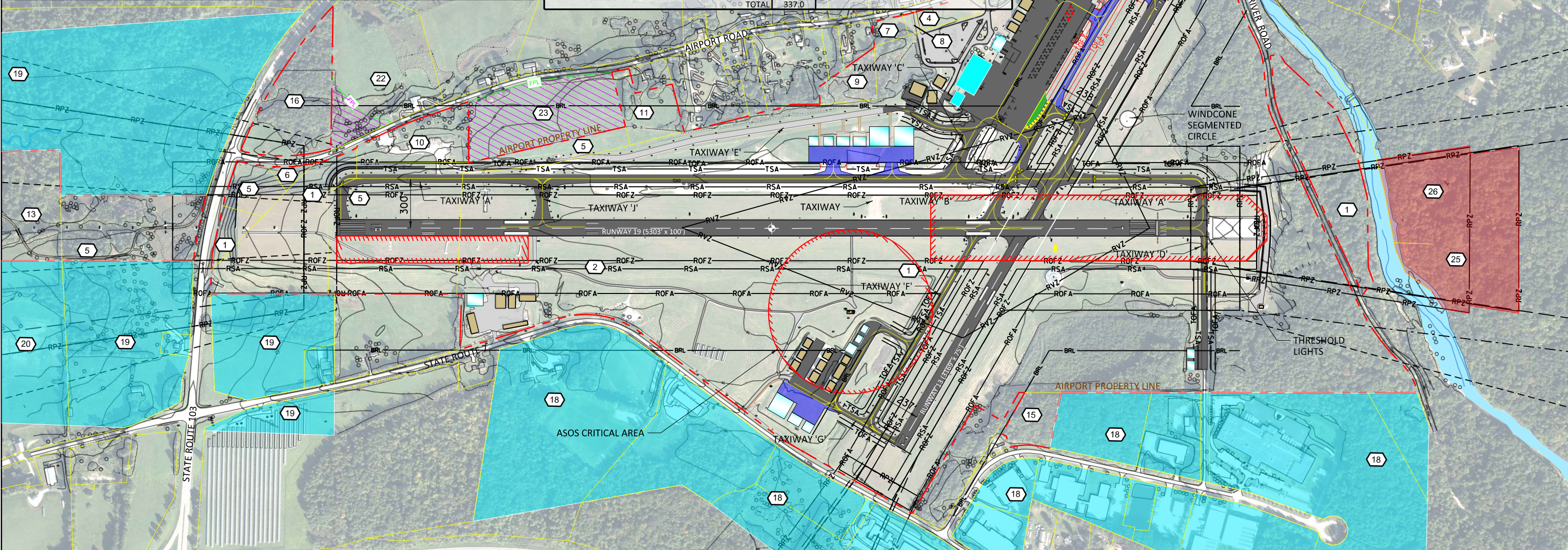
FILE NAME: z16h171.Land UsePlan.dgn
PROJECT LEADER: POM
DESIGNED BY: CJK/AJF
LAND USE PLAN

PLOT DATE: 9/10/2021
DRAWN BY: MED
CHECKED BY: RTL
SHEET 12 OF 13

III Winners Circle, PO Box 5269 Albany, NY 12205-0269
 518.453.4500 • www.chacompanies.com

PROPOSED AIRPORT PROPERTY - EASEMENT					
REFERENCE NUMBER	BOOK AND PAGE	OWNER	EXISTING LAND USE	ACREAGE	PURPOSE
19	53/426	GILBERT A. ET UX PIERCE	FORESTED	4.6	HEIGHT AND LAND USE CONTROL
20	53/426	HENRY & ILSE VERGI	OPEN SPACE	0.4	HEIGHT AND LAND USE CONTROL
21	N/A	N/A	FORESTED / OPEN SPACE	5.4	HEIGHT AND LAND USE CONTROL
24	N/A	N/A	AGRICULTURAL	3.2	HEIGHT AND LAND USE CONTROL
25	N/A	N/A	CONSERVATION	2.9	HEIGHT AND LAND USE CONTROL
26	N/A	N/A	CONSERVATION / FORESTED	6.5	HEIGHT AND LAND USE CONTROL
27	N/A	N/A	CONSERVATION	< 0.1	HEIGHT AND LAND USE CONTROL
28	N/A	N/A	CONSERVATION	0.2	HEIGHT AND LAND USE CONTROL
29	N/A	N/A	CONSERVATION	0.5	HEIGHT AND LAND USE CONTROL
30	N/A	N/A	CONSERVATION	1.0	HEIGHT AND LAND USE CONTROL
31	N/A	N/A	RESIDENTIAL	0.3	HEIGHT AND LAND USE CONTROL
32	N/A	N/A	RESIDENTIAL	0.2	HEIGHT AND LAND USE CONTROL
33	N/A	N/A	RESIDENTIAL	< 0.1	HEIGHT AND LAND USE CONTROL
34	N/A	N/A	RESIDENTIAL	< 0.1	HEIGHT AND LAND USE CONTROL
35	N/A	N/A	CONSERVATION	0.9	HEIGHT AND LAND USE CONTROL
36	N/A	N/A	CONSERVATION	1.2	HEIGHT AND LAND USE CONTROL

EXISTING AIRPORT PROPERTY - FEE SIMPLE							
REFERENCE NUMBER	BOOK AND PAGE	OWNER	ACREAGE	AIP NUMBER	AIP ACREAGE	ACQUISITION DATE	PURPOSE
1	N/A	STATE OF VERMONT	238.9	N/A	N/A	N/A	AVIATION
2	27/158	STATE OF VERMONT	31.3	5902	31.2	1942	AVIATION
3	32/1	STATE OF VERMONT	0.6	6103	X	1961	AVIATION
4	53/426	STATE OF VERMONT	1.2	3-50-0015-08	1.3	1985	AVIATION
5	53/426	STATE OF VERMONT	26.5	6-50-0015-07	12.34	1985	AVIATION
6	65/472	STATE OF VERMONT	0.5	3-50-0015-11	0.5	1989	AVIATION
7	52/102	STATE OF VERMONT	0.7	N/A	N/A	1984	AVIATION
8	55/399	STATE OF VERMONT	0.2	N/A	N/A	1986	AVIATION
9	76/249	STATE OF VERMONT	1.8	N/A	N/A	1993	AVIATION
10	81/79	STATE OF VERMONT	3.9	N/A	N/A	1994	AVIATION
11	83/179	STATE OF VERMONT	2.7	N/A	N/A	1995	AVIATION
12	93/545	STATE OF VERMONT	1.8	N/A	N/A	1995	AVIATION
13	103/534	STATE OF VERMONT	8.3	N/A	N/A	2001	AVIATION
14	104/51	STATE OF VERMONT	9.5	N/A	N/A	2001	AVIATION
15	105/458	STATE OF VERMONT	2.0	N/A	N/A	2002	AVIATION
16	130/433	STATE OF VERMONT	7.1	3-50-0015-26	7.6	2007	AVIATION
			TOTAL	337.0			



FILE NAME = N:\p\projects\AVIATION\CLARENDON-AV-FY17\17\Consult\Drawings\Aviation\z16h171_Property_Map.dgn
 DATE / TIME = 9/10/2021
 USER = 4066

LEGEND

- EX. BUILDING
- AIRFIELD PAVEMENT
- CREEK / WATERWAY
- 800 ELEVATION CONTOURS
- TREELINES
- RPZ RUNWAY PROTECTION ZONE (RPZ)
- RSA RUNWAY SAFETY AREA (RSA)
- ROFA RUNWAY OBJECT FREE AREA (ROFA)
- ROFZ RUNWAY OBSTACLE FREE ZONE (ROFZ)
- RVZ TAXIWAY VISIBILITY ZONE (RVZ)
- TSA TAXIWAY SAFETY AREA (TSA)
- BRL 35' BUILDING RESTRICTION LINE (BRL)
- TOFA TAXIWAY OBJECT FREE AREA (TOFA)
- PART 77 APPROACH SURFACE
- THRESHOLD SITING SURFACE (TSS)
- GLIDE SLOPE CRITICAL AREA
- EX. AIRPORT PROPERTY LINE

DECLINATION: 13° 48' W ± 0" 23'
CHANGING BY 0" 4" E/YEAR
ON AUGUST 2021

SCALE IN FEET

- PARCEL NUMBER
- PARCEL LINE
- EX. FENCE LINE
- SURVEY MARKER
- AIRPORT REFERENCE POINT (ARP)
- EX. WINDCONE
- FUTURE HANGER DEVELOPMENT
- FUTURE APRON/TAXIWAY
- PAVEMENT/BUILDING REMOVAL
- FPL FUTURE PROPERTY LINE
- TOFA FUTURE TAXIWAY/TAXILANE
- TSA OBJECT FREE AREA/SAFETY AREA
- EX. AVIGATION EASEMENTS
- FUTURE AVIGATION EASEMENTS
- FUTURE PROPERTY ACQUISITION

PROPOSED PROPERTY ACQUISITION - FEE SIMPLE					
REFERENCE NUMBER	BOOK AND PAGE	OWNER	EXISTING LAND USE	ACREAGE	PURPOSE
19 WEST	53/426	GILBERT A. ET UX PIERCE	OPEN SPACE	5.2	AVIATION
19 EAST	53/426	GILBERT A. ET UX PIERCE	FORESTED	7	AVIATION
20	53/426	HENRY & ILSE VERGI	OPEN SPACE	4	AVIATION
21	N/A	N/A	FORESTED / OPEN SPACE	2.8	AVIATION
22	N/A	N/A	RESIDENTIAL / FORESTED	1.5	AVIATION
23	N/A	DAVID & MARY DRANSFIELD	RESIDENTIAL	8.0	AVIATION

EXISTING AIRPORT PROPERTY - EASEMENT							
REFERENCE NUMBER	BOOK AND PAGE	OWNER	ACREAGE	AIP NUMBER	AIP ACREAGE	ACQUISITION DATE	PURPOSE
17	31/418	CLIFFORD H. & MARY E. BROWN	< 0.1	6103	N/A	1961	AVIATION
18	51/180	WILLIAM A. & DORIS H. WEEKS	119.9	N/A	N/A	1983	AVIATION
19	53/426	GILBERT A. ET UX PIERCE	64.1	6-50-0015-07	51.7	1985	AVIATION
20	53/426	HENRY & ILSE VERGI	10.5	6-50-0015-07	16.5	1985	AVIATION

REVISIONS			
NO.	Description	Date	By

III Winners Circle, PO Box 5269 Albany, NY 12205-0269
518.453.4500 • www.chacompanies.com

PROJECT NAME: AIRPORT LAYOUT PLAN
PROJECT NUMBER: CLARENDON-AV-FY17-007

FILE NAME: z16h171_Property_Map.dgn
PROJECT LEADER: POM
DESIGNED BY: CJK/AJF
AIRPORT PROPERTY MAP

PLOT DATE: 9/10/2021
DRAWN BY: MED
CHECKED BY: RTL
SHEET 13 OF 13