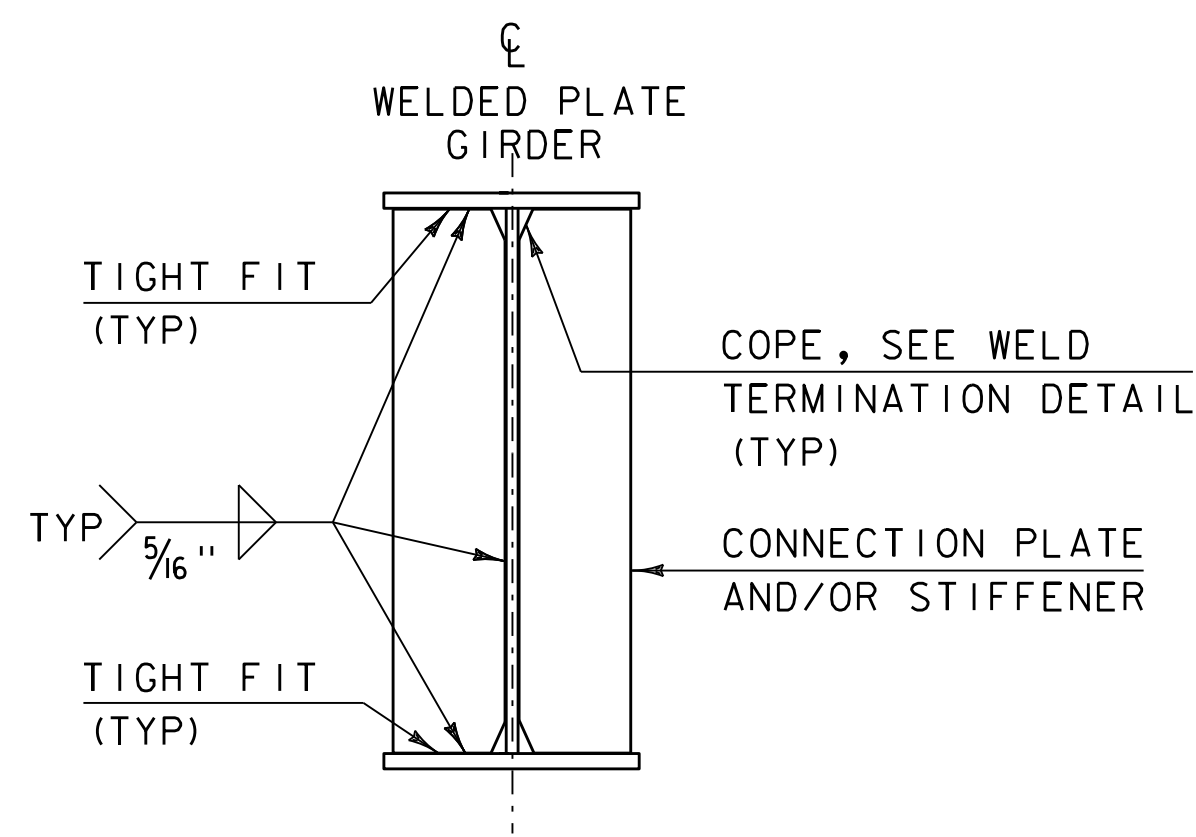
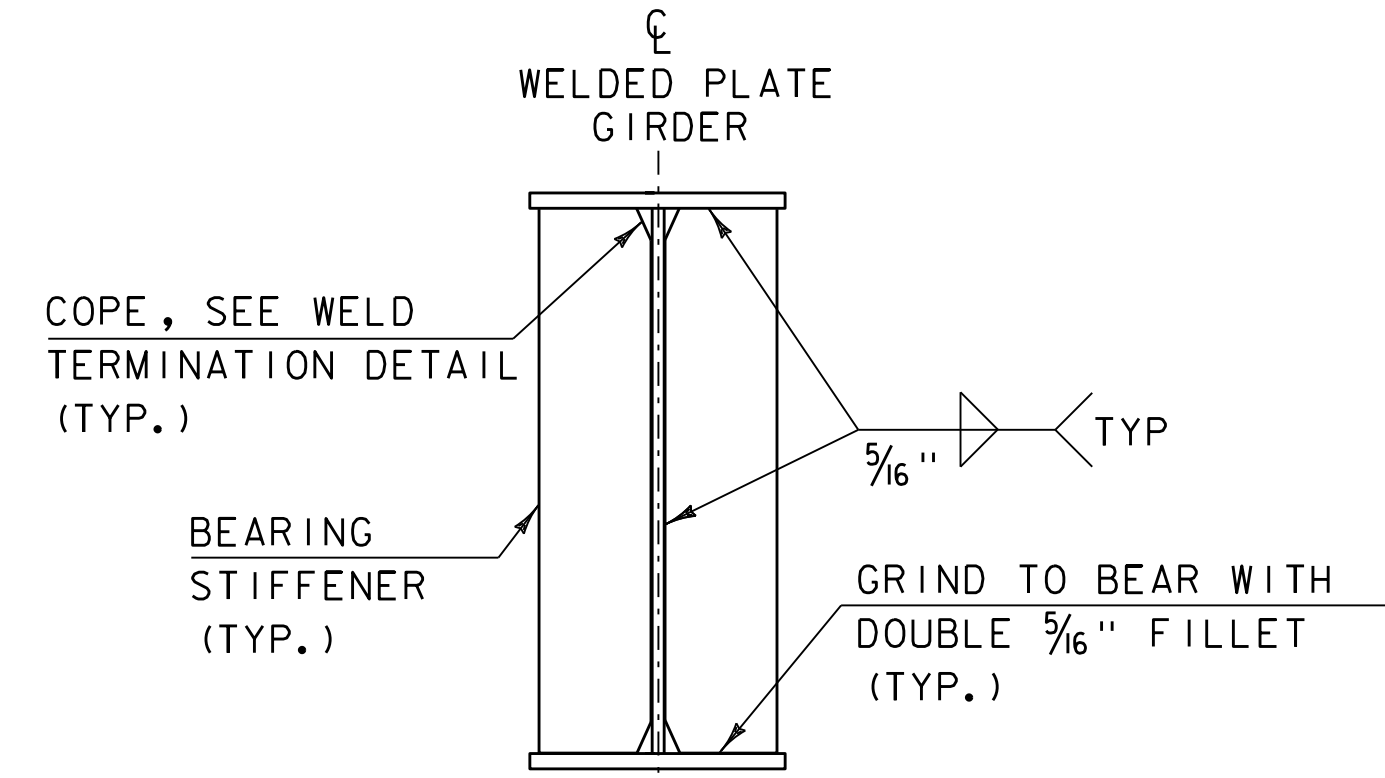


WELD TERMINATION AND COPING
DETAILS FOR STEEL MEMBERS
(NOT TO SCALE)

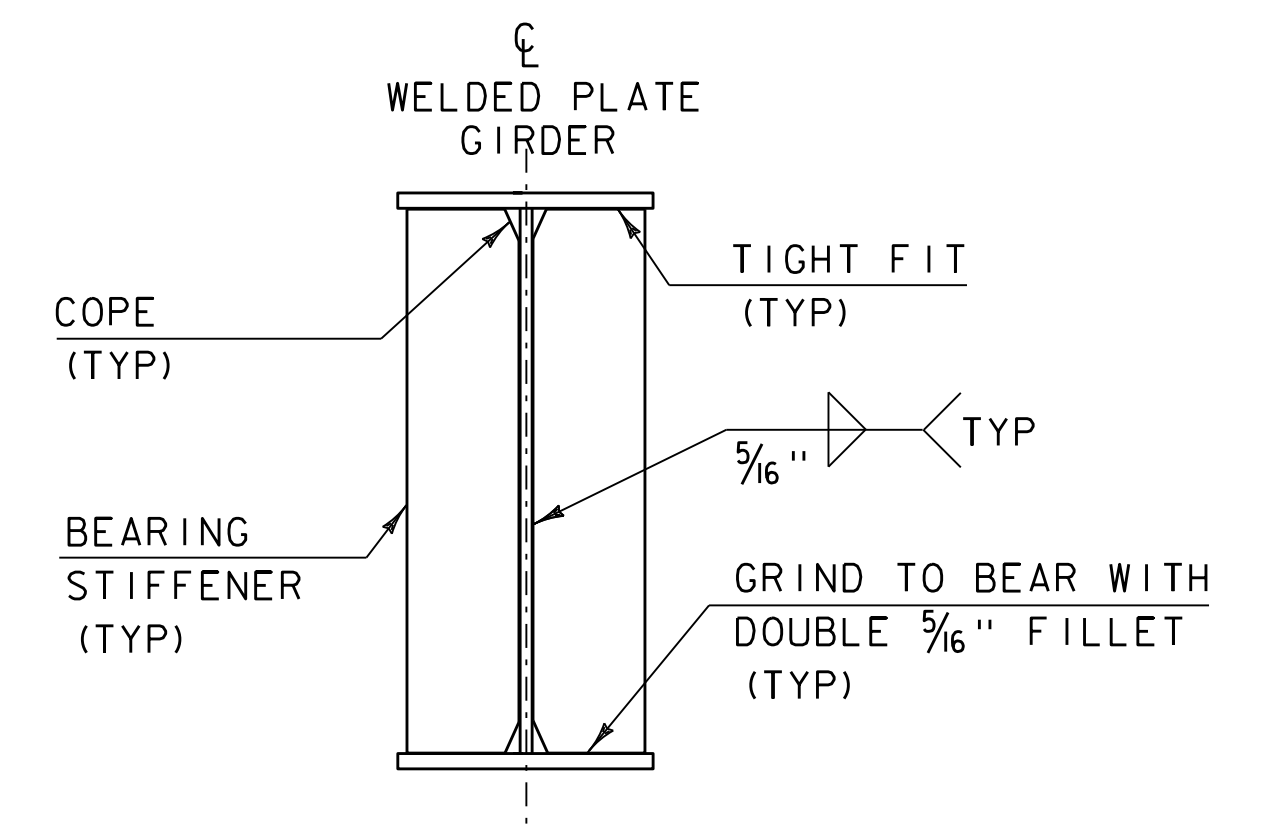
*NO WELD FOR 3/8" MIN. 7/8" MAX. (EXCEPT MUST
MAINTAIN 1" MINIMUM FROM EDGE OF FLANGE)



INTERMEDIATE CONNECTION PLATES
AND/OR STIFFENERS FOR WELDED
PLATE GIRDERS
(NOT TO SCALE)

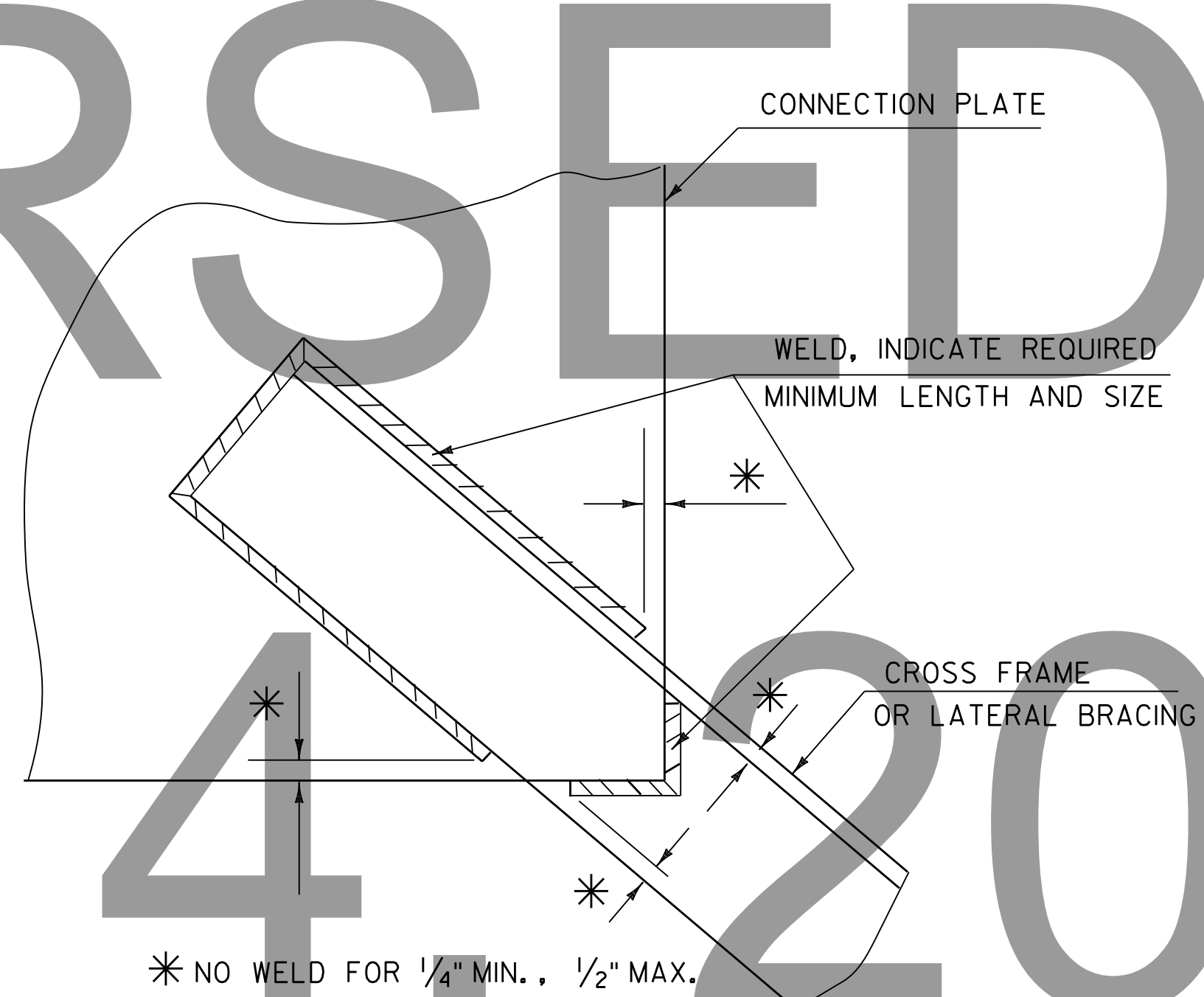


ABUTMENT BEARING STIFFENERS
FOR WELDED PLATE GIRDERS
(NOT TO SCALE)

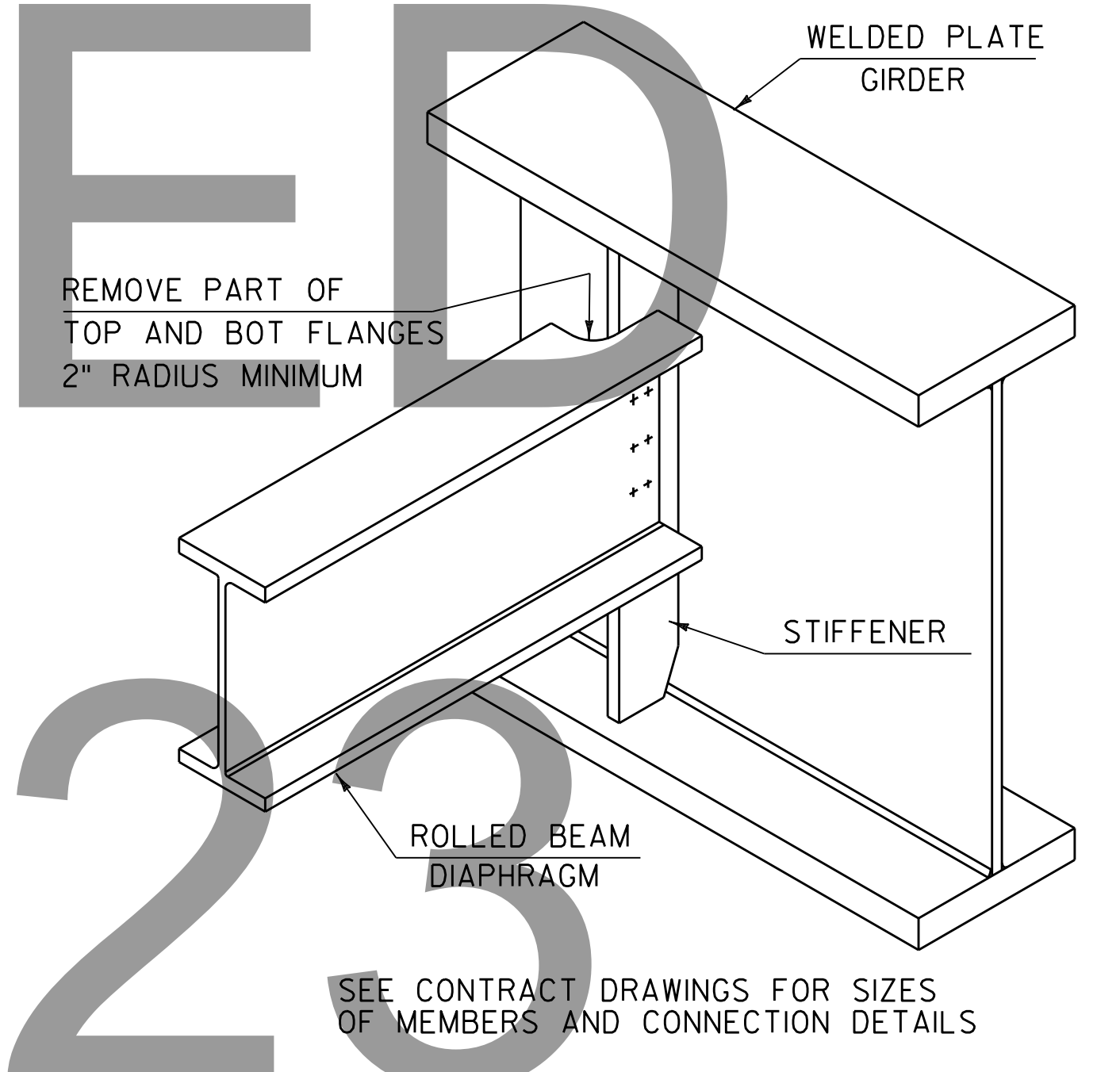


PIER BEARING STIFFENERS
FOR WELDED PLATE GIRDERS
(NOT TO SCALE)

SUPERSEDED
FEB. 14, 2023



WELD LOCATION DETAIL AT CROSS
FRAMES AND LATERAL BRACING
(NOT TO SCALE)



ROLLED BEAM USED AS DIAPHRAGM
(NOT TO SCALE)

REV.	DATE	DESCRIPTION
0	APR. 7, 2020	ORIGINAL APPROVAL
OTHER STANDARDS REQUIRED: S-601		
VTRANS AND FHWA APPROVAL ON FILE WITH CONTRACT ADMINISTRATION		

STRUCTURAL STEEL PLATE
GIRDER DETAILS AND NOTES



STANDARD
S-601