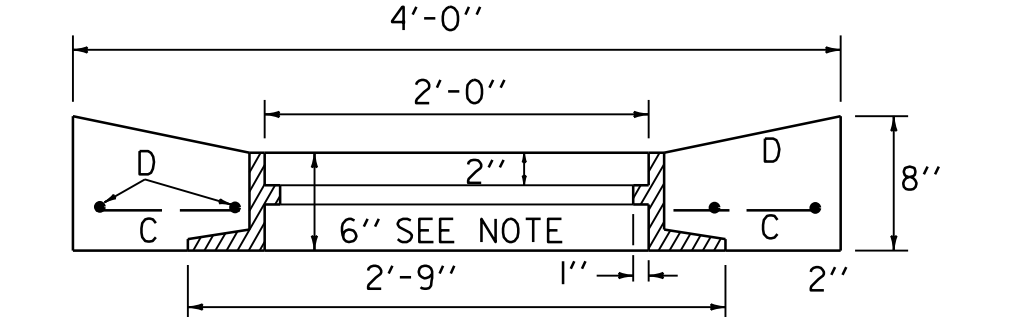


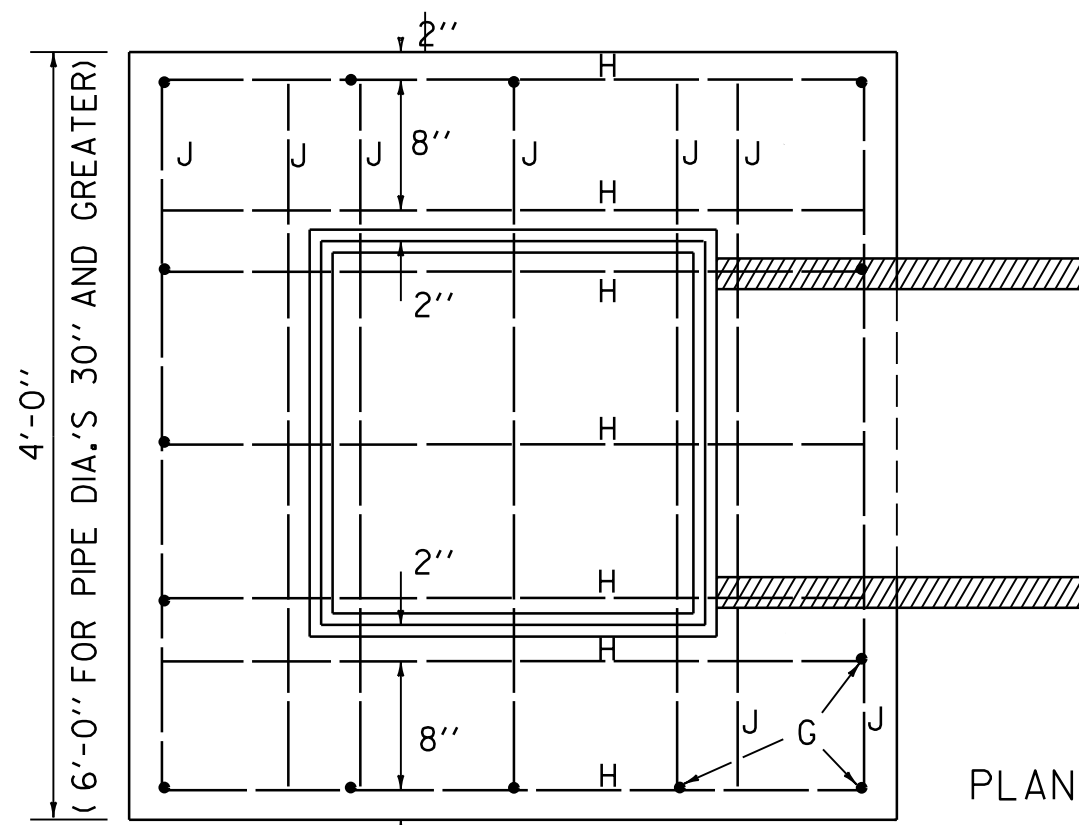
PLAN VIEW



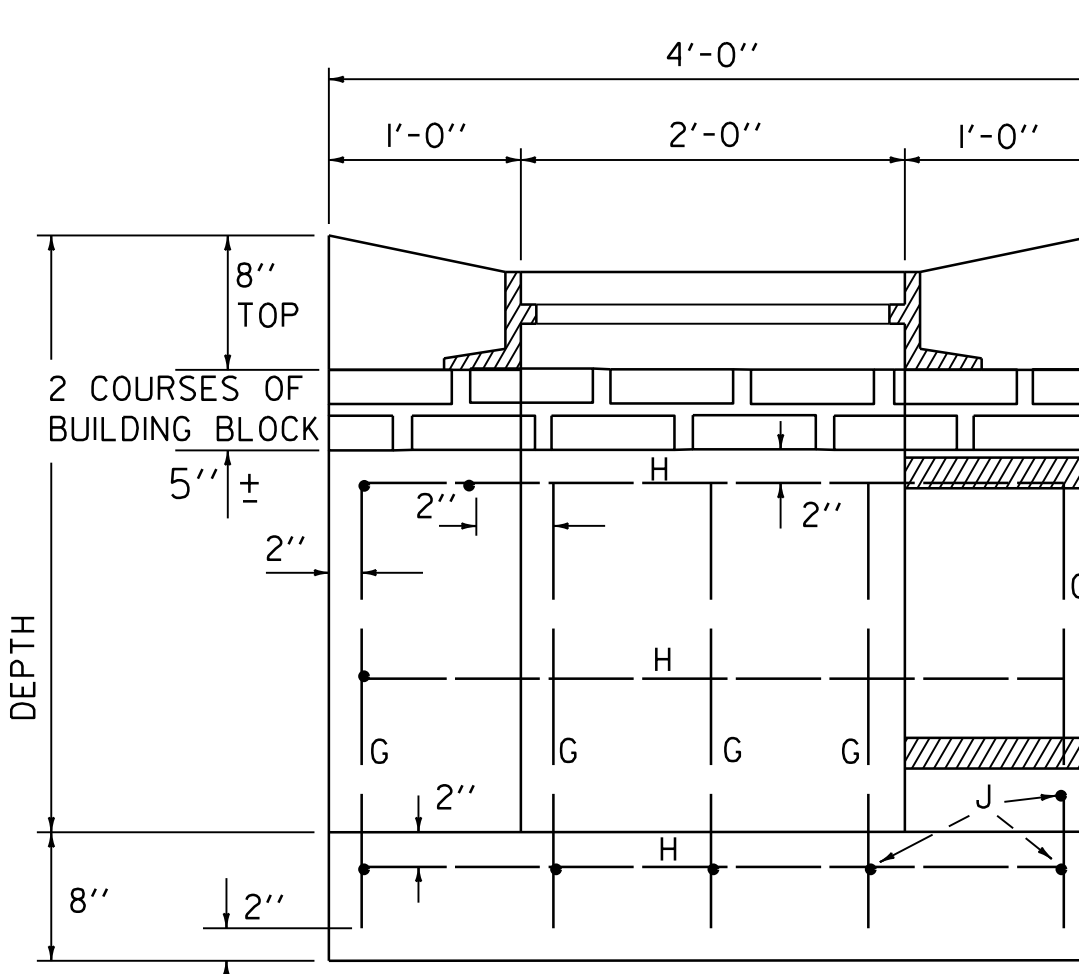
ELEVATION

NOTE : FRAME SHOWN IS FOR TYPE A GRATE, SEE SHEET D-11, FOR TYPE B GRATE AND FRAME, SEE SHEET D-16 (EXCEPT THE FRAME DEPTH DIMENSION SHALL BE 6").

TOP FOR REINFORCED CONCRETE DROP INLET WITH GRATE FOR USE IN DITCHES



PLAN VIEW



ELEVATION

REINFORCED CONCRETE DROP INLET FOR USE IN DITCHES

STEEL SCHEDULE																														
4'x4' DROP INLET TYPE A						4'x6' DROP INLET WITH TWO GRATES TYPE B						TYPE C 4'x6' DROP INLET WITH ONE GRATE WITH 4'x6' TOP																		
12", 15", 18", 24"						30", 36"						30", 36"																		
DEPTH	G	LENGTH	H, J	LENGTH	C, D	LENGTH	G	LENGTH	H	LENGTH	J	LENGTH	C	LENGTH	D	LENGTH	DEPTH	G	LENGTH	H	LENGTH	J	LENGTH	C	LENGTH	D	LENGTH	DEPTH		
3'-0"	15	2'-3"	22	3'-8"	8	3'-8"											3'-0"													
3'-6"	15	2'-9"	22	3'-8"	8	3'-8"											3'-6"													
4'-0"	15	3'-3"	29	3'-8"	8	3'-8"	17	3'-3"	19	3'-8"	10	5'-8"	4	3'-8"	4	5'-8"	4'-0"	17	3'-8"	19	3'-8"	10	5'-8"	6	3'-8"	4	5'-8"	4	5'-8"	4'-0"
4'-6"	15	3'-9"	29	3'-8"	8	3'-8"	17	3'-9"	19	3'-8"	10	5'-8"	4	3'-8"	4	5'-8"	4'-6"	17	4'-2"	19	3'-8"	10	5'-8"	6	3'-8"	4	5'-8"	4	5'-8"	4'-6"
5'-0"	15	4'-3"	35	3'-8"	8	3'-8"	17	4'-3"	23	3'-8"	13	5'-8"	4	3'-8"	4	5'-8"	5'-0"	17	4'-8"	23	3'-8"	13	5'-8"	6	3'-8"	4	5'-8"	4	5'-8"	5'-0"
5'-6"	15	4'-9"	35	3'-8"	8	3'-8"	17	4'-9"	23	3'-8"	13	5'-8"	4	3'-8"	4	5'-8"	5'-6"	17	5'-2"	23	3'-8"	13	5'-8"	6	3'-8"	4	5'-8"	4	5'-8"	5'-6"
6'-0"	15	5'-3"	41	3'-8"	8	3'-8"	17	5'-3"	27	3'-8"	15	5'-8"	4	3'-8"	4	5'-8"	6'-0"	17	5'-8"	27	3'-8"	15	5'-8"	6	3'-8"	4	5'-8"	4	5'-8"	6'-0"
6'-6"	15	5'-9"	41	3'-8"	8	3'-8"	17	5'-9"	31	3'-8"	15	5'-8"	4	3'-8"	4	5'-8"	6'-6"	17	6'-2"	31	3'-8"	15	5'-8"	6	3'-8"	4	5'-8"	4	5'-8"	6'-6"
7'-0"	15	6'-3"	47	3'-8"	8	3'-8"	17	6'-3"	35	3'-8"	17	5'-8"	4	3'-8"	4	5'-8"	7'-0"	17	6'-2"	35	3'-8"	17	5'-8"	6	3'-8"	4	5'-8"	4	5'-8"	7'-0"
7'-6"	15	6'-9"	47	3'-8"	8	3'-8"	17	6'-9"	35	3'-8"	17	5'-8"	4	3'-8"	4	5'-8"	7'-6"	17	7'-2"	35	3'-8"	17	5'-8"	6	3'-8"	4	5'-8"	4	5'-8"	7'-6"
8'-0"	15	7'-3"	53	3'-8"	8	3'-8"	17	7'-3"	39	3'-8"	19	5'-8"	4	3'-8"	4	5'-8"	8'-0"	17	7'-8"	39	3'-8"	19	5'-8"	6	3'-8"	4	5'-8"	4	5'-8"	8'-0"

STEEL AND CONCRETE QUANTITIES																								
4'x4' DROP INLET				4'x6' DROP INLET WITH TWO GRATES				4'x6' DROP INLET WITH ONE GRATES				STEEL SCHEDULE TYPE D												
12"-15"-18"-24"				30"				36"				4'x6' DROP INLET WITH ONE GRATE WITH 4'x4' TOP												
TYPE A				TYPE B				TYPE C				30", 36"												
DEPTH	CONC. C.Y.	STEEL LBS		CONC. C.Y.	STEEL LBS	CONC. * C.Y.	STEEL LBS	DEPTH	CONC. C.Y.	STEEL LBS	CONC. C.Y.	STEEL LBS	DEPTH	G	LENGTH	H	LENGTH	J	LENGTH	C	LENGTH	D	LENGTH	DEPTH
3'-0"	1.7	150						3'-0"						17	3'-7"	23	3'-8"	13	5'-8"	12	3'-8"	4	5'-8"	5'-0"
3'-6"	1.9	158						3'-6"						17	4'-1"	23	3'-8"	13	5'-8"	12	3'-8"	4	5'-8"	5'-6"
4'-0"	2.1	193	2.7	228				4'-0"	2.8	244				17	4'-7"	27	3'-8"	15	5'-8"	12	3'-8"	4	5'-8"	6'-0"
4'-6"	2.3	200	3.0	237	2.9	237	4'-6"	3.1	252	3.0	252	4'-6"	17	5'-1"	31	3'-8"	15	5'-8"	12	3'-8"	4	5'-8"	6'-6"	
5'-0"	2.6	231	3.3	279	3.2	279	5'-0"	3.4	294	3.3	294	5'-0"	17	5'-7"	35	3'-8"	17	5'-8"	12	3'-8"	4	5'-8"	7'-0"	
5'-6"	2.8	239	3.6	288	3.5	288	5'-6"	3.7	303	3.6	303	5'-6"	17	6'-1"	35	3'-8"	17	5'-8"	12	3'-8"	4	5'-8"	7'-6"	
6'-0"	3.0	270	3.9	324	3.8	324	6'-0"	4.0	339	3.9	339	6'-0"	17	6'-7"	39	3'-8"	19	5'-8"	12	3'-8"	4	5'-8"	8'-0"	
6'-6"	3.2	278	4.2	348	4.1	348	6'-6"	4.3	363	4.2	363	6'-6"	17	7'-1"	43	3'-8"	19	5'-8"	12	3'-8"	4	5'-8"	8'-6"	
7'-0"	3.5	308	4.5	384	4.4	384	7'-0"	4.6	399	4.5	399	7'-0"	17	7'-7"	47	3'-8"	19	5'-8"	12	3'-8"	4	5'-8"	9'-0"	
7'-6"	3.7	316	4.8	393	4.7	393	7'-6"	4.9	408	4.8	408	7'-6"	17	8'-1"	51	3'-8"	19	5'-8"	12	3'-8"	4	5'-8"	9'-6"	
8'-0"	3.9	347	5.1	429	5.0	429	8'-0"	5.2	444	5.1	444	8'-0"	17	8'-7"	55	3'-8"	19	5'-8"	12	3'-8"	4	5'-8"	10'-0"	

FOR 2nd 30" PIPE DEDUCT 0.18 C.Y. FOR 2nd 42" PIPE DEDUCT 0.36 C.Y., OR 0.18 FOR 1 PIPE FOR 2nd 36" PIPE DEDUCT 0.26 C.Y. FOR 2nd 48" PIPE DEDUCT 0.47 C.Y., OR 0.24 FOR 1 PIPE

ALL REINFORCING STEEL TO BE NO. 5 DEFORMED BARS, EVENLY SPACED WITH A MAXIMUM SPACING OF 12" C/C. ALL STEEL TO HAVE 2 INCH MIN. COVER.

DROP INLET TO BE CONSTRUCTED IN ACCORDANCE WITH STRUCTURAL CONCRETE, SECTION 541. GRATES TO CONFORM TO DROP INLETS, CATCH BASINS, AND MANHOLES, SECTION 604.

FURNISHING AND LAYING OF BRICKS FOR ADJUSTING ELEVATION OF GRATE SHALL BE INCLUDED IN UNIT BID PRICE FOR CONCRETE, AND THEIR VOLUME TO BE INCLUDED IN THE FINAL QUANTITIES.

MORTAR, TYPE II, TO BE USED AS JOINT FILLER AND LAYING OF BRICK.

FOR PIPES OF 30" OR MORE IN DIAMETER, ALLOWANCE SHALL BE MADE FOR THE OPENING IN COMPUTING CONCRETE VOLUMES. THIS DEDUCTION WILL BE BASED ON THE RATED DIAMETER OF THE PIPE USED, WITH THE SAME DEDUCTION FOR CONCRETE AND METAL PIPE. ABOVE TABLES INDICATE DEDUCTION FOR ONE PIPE.

STEEL AND CONCRETE QUANTITIES 4'x6' DROP INLET WITH ONE GRATE WITH 4'x4' TOP TYPE D

DEPTH	30"		36"	
	STEEL LBS	CONC. C.Y.	CONC. C.Y.	STEEL LBS
5'-0"	3.2	313	3.1	313
5'-6"	3.5	322	3.4	322
6'-0"	3.8	358	3.7	358
6'-6"	4.1	382	4.0	382
7'-0"	4.4	418	4.3	418
7'-6"	4.7	427	4.6	427
8'-0"	5.0	463	4.9	463

TOP AND ADAPTER PLAN VIEW

4'x6' DROP INLET TOP WITH TWO CAST IRON GRATES

PLAN VIEW

ELEVATION

4'x6' DROP INLET TOP WITH ONE CAST IRON GRATE

PLAN VIEW

ELEVATION

REINFORCED CONCRETE DROP INLET FOR USE IN DITCHES

PLAN VIEW

ELEVATION

REINFORCED CONCRETE DROP INLET FOR USE IN DITCHES

PLAN VIEW

ELEVATION

REINFORCED CONCRETE DROP INLET FOR USE IN DITCHES

PLAN VIEW

ELEVATION

REINFORCED CONCRETE DROP INLET FOR USE IN DITCHES

PLAN VIEW

ELEVATION

REV.	DATE	DESCRIPTION
0	APR. 4, 1973	ORIGINAL APPROVAL
1	JUN. 1, 1994	REISSUED, WITHOUT CHANGE, NEW SIGNATURES
2	JUN. 25, 2024	MISC. REVISIONS, BORDER UPDATE
OTHER STANDARDS REQUIRED: NONE		
VTRANS AND FHWA APPROVAL ON FILE WITH CONTRACT ADMINISTRATION		

## REINFORCED CONCRETE DROP INLET WITH GRATE FOR USE IN DITCHES



STANDARD  
D-6