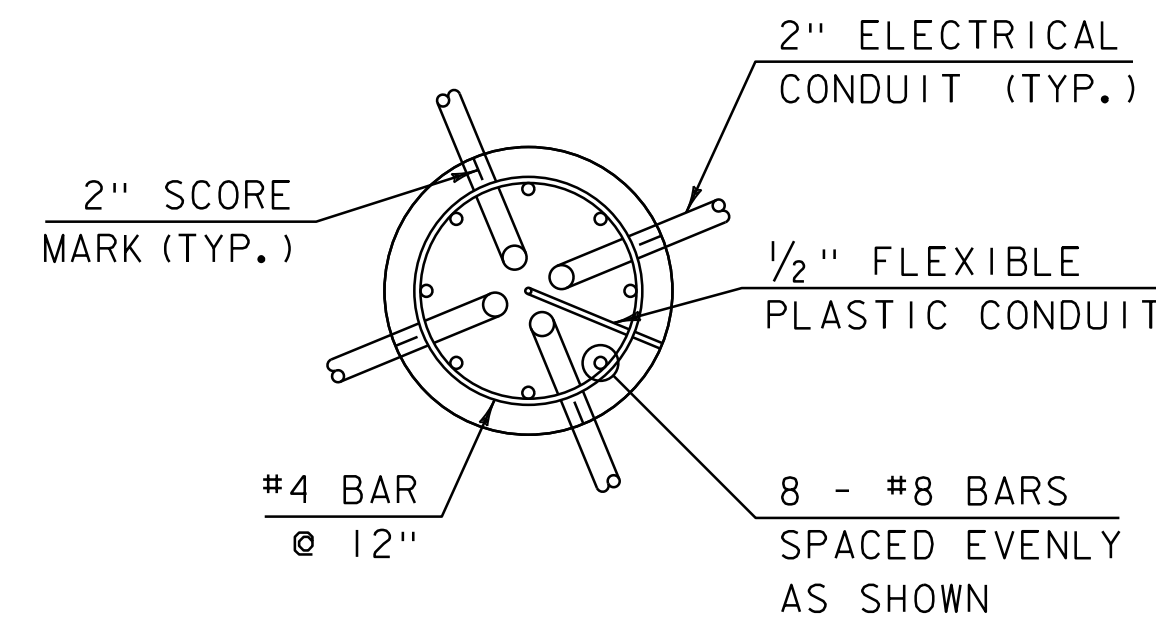
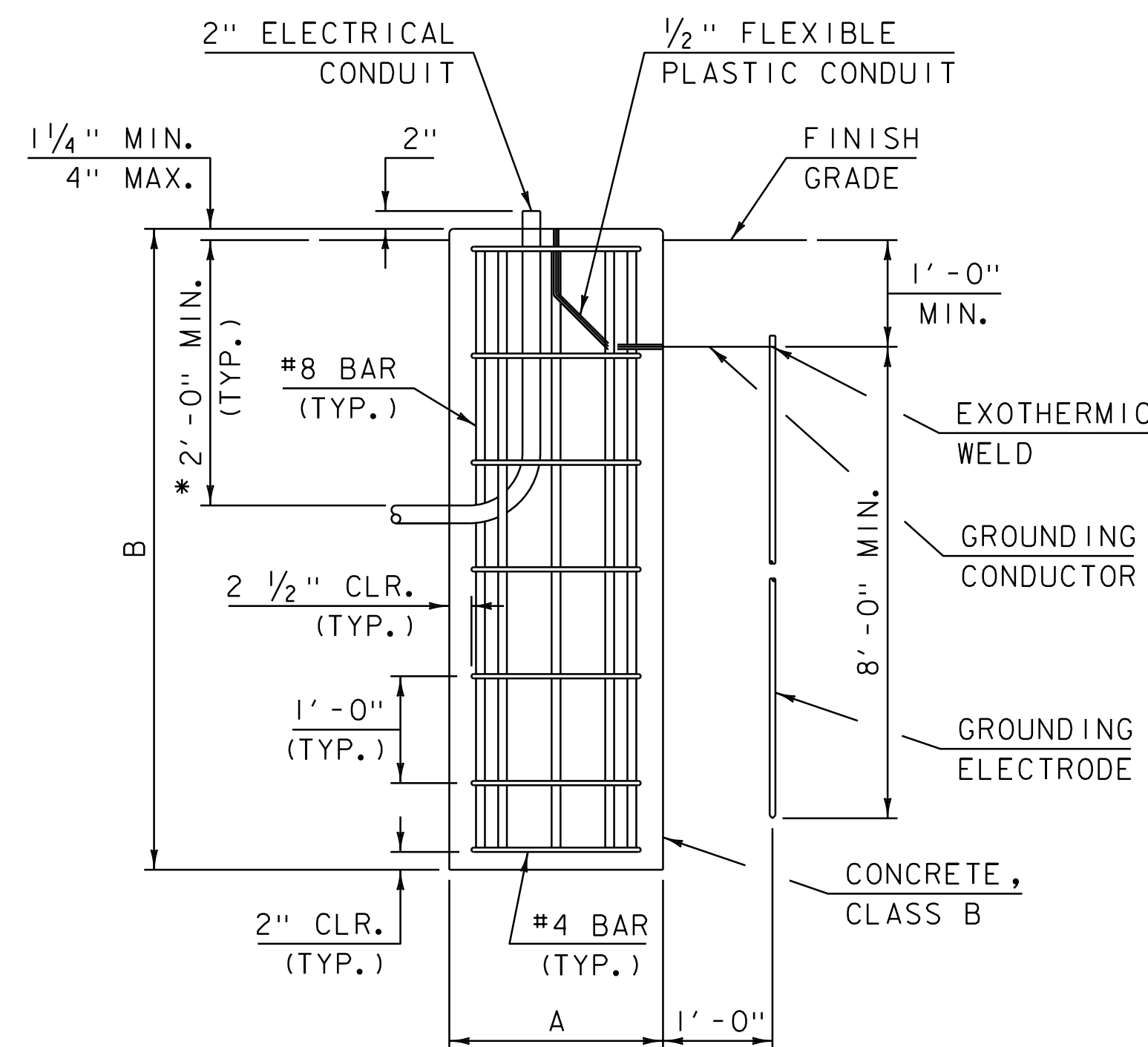


SCORE MARK DETAIL



PLAN



ELEVATION

* 3' - 0" WHEN UNDER ROADWAY

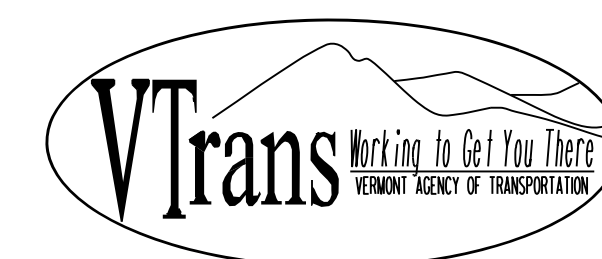
MOUNTING HEIGHT (H) (FT)	BRACKET ARM LENGTH (L) (FT)	A (FT)	B (FT)
H < 20	ANY LENGTH	2	6
20 ≤ H < 40	L < 8	2	6
20 ≤ H < 40	8 ≤ L < 10	2.5	6
20 ≤ H < 40	10 ≤ L ≤ 16	2.5	8

GENERAL NOTES:

- CONCRETE SHALL MEET THE REQUIREMENTS OF CONCRETE, CLASS B AS SPECIFIED IN SECTION 541 OF THE CURRENT VTRANS STANDARD SPECIFICATIONS FOR CONSTRUCTION, AND ITS LATEST REVISIONS, AND HAVE A SMOOTH LEVEL TOP SURFACE FINISHED WITH A 1/2 INCH RADIUS EDGING TOOL.
- REINFORCING STEEL SHALL MEET THE REQUIREMENTS OF REINFORCING STEEL, LEVEL I AS SPECIFIED IN SECTION 507 OF THE CURRENT VTRANS STANDARD SPECIFICATIONS FOR CONSTRUCTION, AND ITS LATEST REVISIONS.
- ANCHOR BOLTS, WASHERS, NUTS AND OTHER HARDWARE SHALL BE IN ACCORDANCE WITH SUBSECTION 714.09, OF THE CURRENT VTRANS STANDARD SPECIFICATIONS FOR CONSTRUCTION, AND ITS LATEST REVISIONS, AND OF THE SIZE, TYPE AND PLACEMENT AS SPECIFIED BY THE TRANSFORMER BASE MANUFACTURER.
- SCORE MARKS SHALL BE ON THE TOP OF THE LIGHT POLE FOUNDATION DIRECTLY ABOVE ALL CONDUIT LOCATIONS TO SHOW LOCATION OF CONDUIT(S).
- EACH LIGHT POLE FOUNDATION SHALL BE LIMITED TO A MAXIMUM OF FOUR ELECTRICAL CONDUITS. ELECTRICAL CONDUITS SHALL BE PLACED SO AS NOT TO INTERFERE WITH THE LOCATION OF THE ANCHOR BOLTS.
- THE MINIMUM SWEEP RADIUS FOR ELECTRICAL CONDUIT SHALL BE 12 INCHES.
- WHEN LOCATED BEHIND GUARDRAIL, LIGHT POLE FOUNDATIONS SHALL BE INSTALLED OUTSIDE OF THE APPLICABLE DEFLECTION DISTANCE AS IDENTIFIED BY THE CURRENT EDITION OF THE "AMERICAN ASSOCIATION OF STATE HIGHWAY AND TRANSPORTATION OFFICIALS" (AASHTO) "ROADSIDE DESIGN GUIDE", AND ITS LATEST REVISIONS.
- DETAILS ARE FOR CAST IN PLACE LIGHT POLE FOUNDATIONS ONLY. CONSTRUCTION DRAWINGS SHALL BE SUPPLIED FOR PRE-CAST LIGHT POLE FOUNDATIONS.

REV.	DATE	DESCRIPTION
0	DEC. 21, 2015	ORIGINAL APPROVAL
1	JUL. 25, 2016	UPDATED REBAR COVER FOR HPC, ADDED NOTE 9 REVISED NOTES 1,2,3,7. UPDATED CHART
2	FEB. 17, 2022	UPDATED CONCRETE REQUIREMENT
3	JUN. 25, 2024	MISC. REVISIONS, BORDER UPDATE
OTHER STANDARDS REQUIRED: NONE		
VTRANS AND FHWA APPROVAL ON FILE WITH CONTRACT ADMINISTRATION		

LIGHT POLE FOUNDATION DETAILS



STANDARD
T-133