



## Windham Regional Planning Commission Access Management Categories

Category 1 - These highways have the capacity for high speed and high volume traffic movements over long distances in an efficient and safe manner, including interstate, interregional, inter-city, and in larger urban areas, intra-city travel.

Category 2 - These highways have the capacity for high speed and high volume traffic movements in an efficient and safe manner, providing for interstate, inter-regional, and inter-city, travel needs and some intra-city travel needs. Category two is the highest category that permits any at-grade intersections. These highways are "limited" or "controlled" access highways.

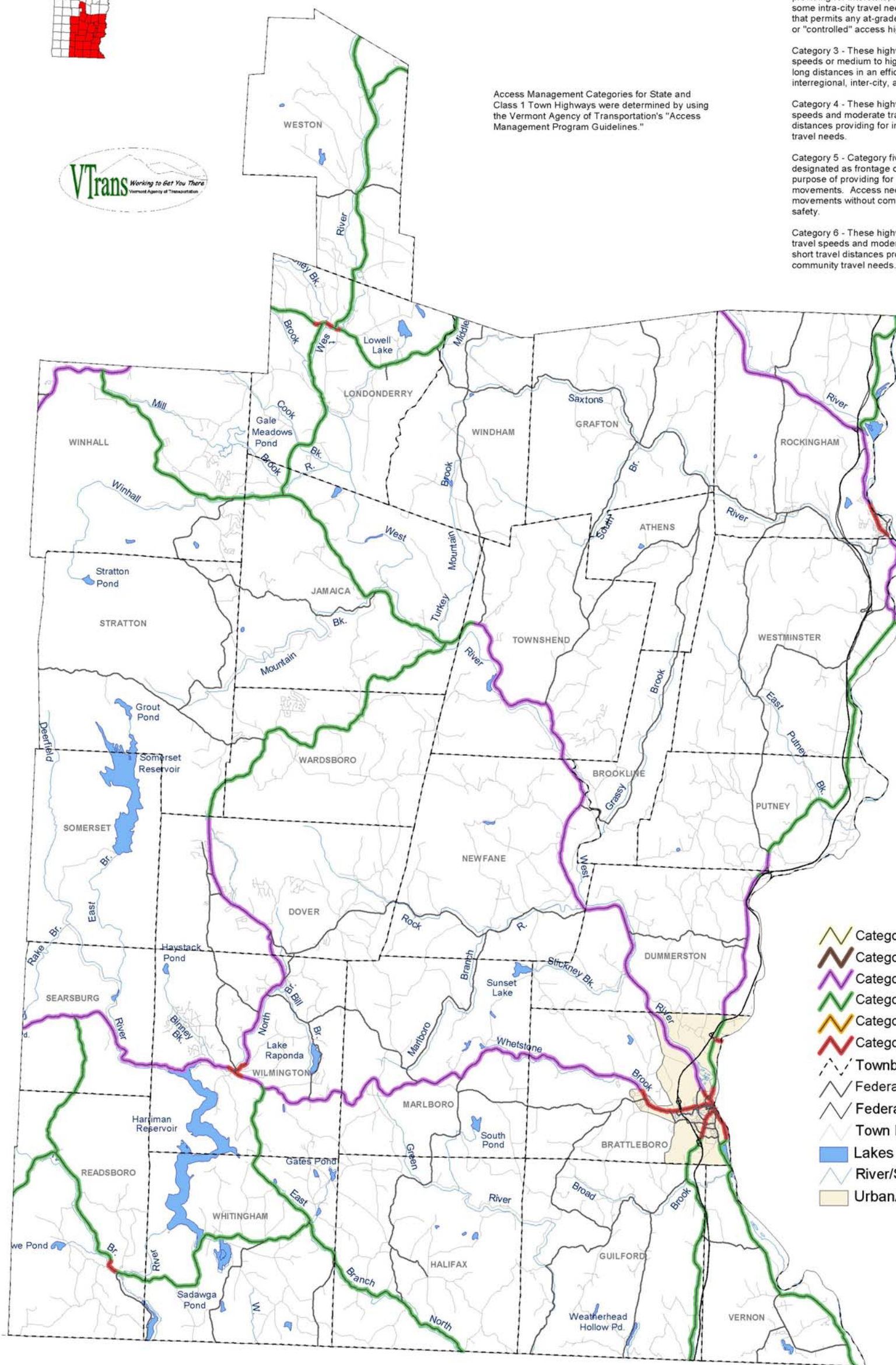
Category 3 - These highways have the capacity for medium to high speeds or medium to high volume traffic movements over medium and long distances in an efficient and safe manner, providing for interregional, inter-city, and intra-city travel needs.

Category 4 - These highways have the capacity for moderate travel speeds and moderate traffic volumes over medium and short travel distances providing for inter-city, intra-city, and intra community travel needs.

Category 5 - Category five shall be assigned only to roadways that are designated as frontage or service roads where there is no intended purpose of providing for long distance or high volume traffic movements. Access needs will take priority over through traffic movements without compromising the public health, welfare, or safety.

Category 6 - These highways have the capacity for moderate to low travel speeds and moderate to high traffic volumes over medium to short travel distances providing for inter-city, intra-city, and intra-community travel needs.

Access Management Categories for State and Class 1 Town Highways were determined by using the Vermont Agency of Transportation's "Access Management Program Guidelines."



- Category 1
- Category 2
- Category 3
- Category 4
- Category 5
- Category 6
- Townbd
- Federal Aid Highways
- Federal Aid Highways - Interstate
- Town Hwys
- Lakes
- River/Stream
- UrbanArea



DRAFT