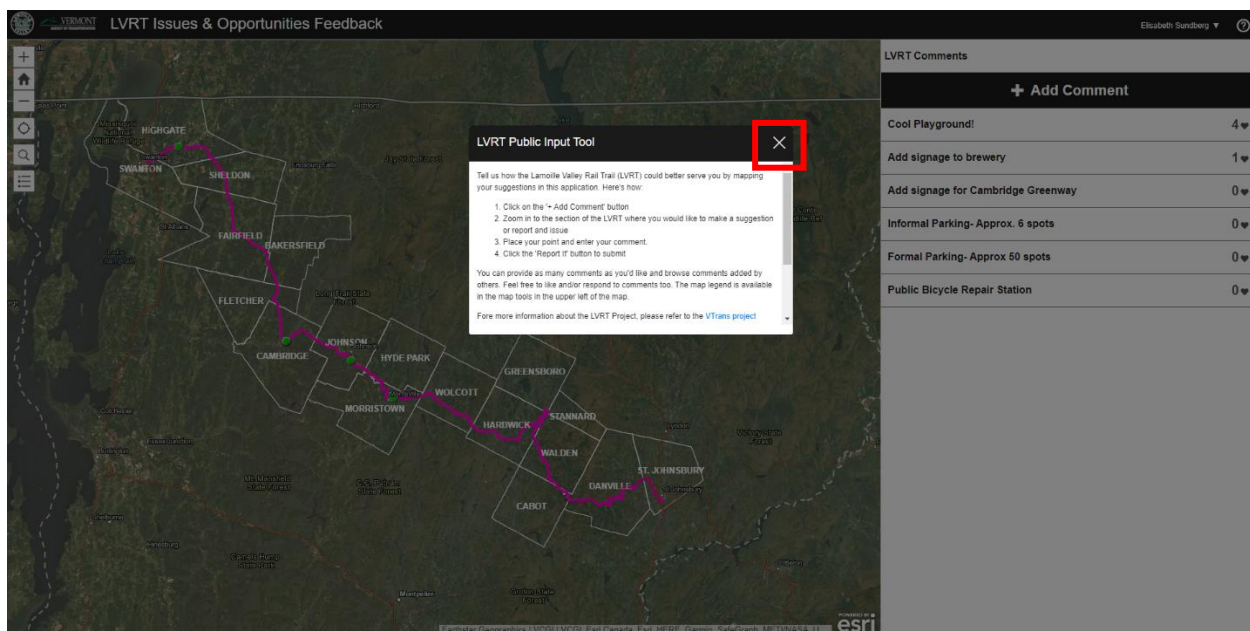


## Using the LVRT Input Tool on a Computer

Please share your insights and ideas on the management, maintenance, operations, potential enhancements, important community connections, and/or economic development opportunities along the LVRT.

1. Click on the link for the LVRT Public Input Tool at <https://vtrans.vermont.gov/highway/local-projects/lvrt/management/input> or enter the website address in a browser <https://vhb.maps.arcgis.com/apps/CrowdsourcingReporter/index.html?appid=2ac813d3a04d402aadbd7f57b648dd25>. Please click proceed as a Guest.
2. Click the X to close the pop-up and view the map.



LVRT Issues & Opportunities Feedback

Elisabeth Sanzberg

LVRT Public Input Tool

Tell us how the Lamoille Valley Rail Trail (LVRT) could better serve you by mapping your suggestions in this application. Here's how:

1. Click on the "+ Add Comment" button
2. Zoom in to the section of the LVRT where you would like to make a suggestion or report an issue
3. Place your point and enter your comment.
4. Click the "Report It" button to submit.

You can provide as many comments as you'd like and browse comments added by others. Feel free to like and/or respond to comments too. The map legend is available in the map tools in the upper left of the map.

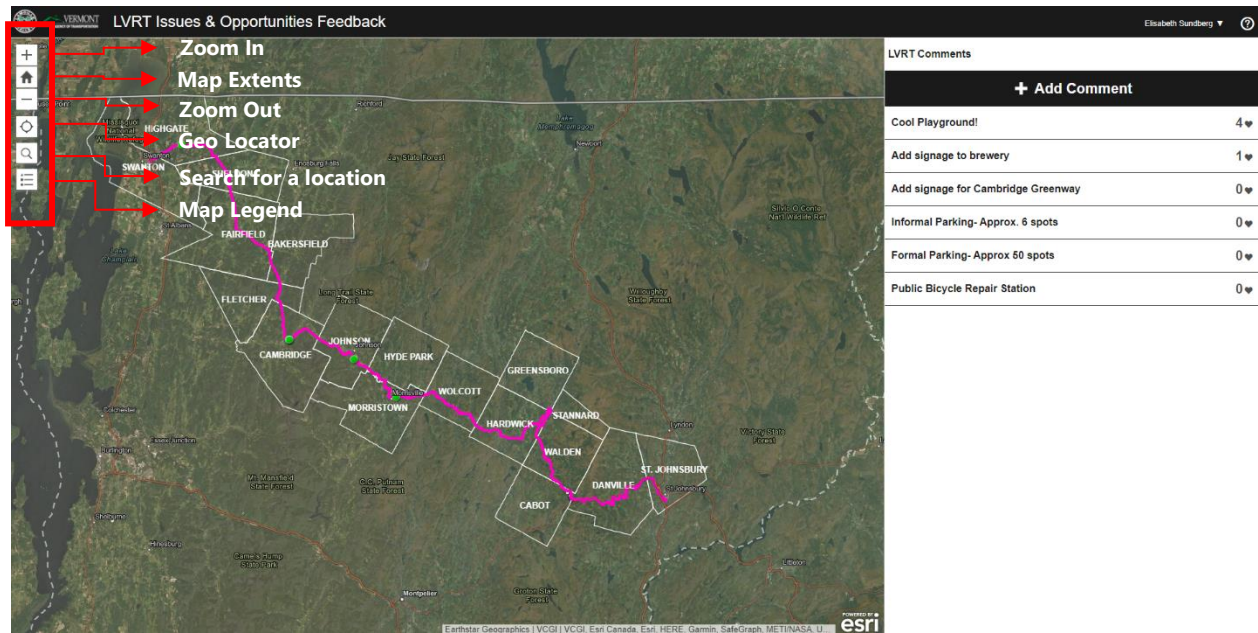
For more information about the LVRT Project, please refer to the [VTrans project](#)

LVRT Comments

+ Add Comment

Cool Playground!	4
Add signage to brewery	1
Add signage for Cambridge Greenway	0
Informal Parking- Approx. 6 spots	0
Formal Parking- Approx 50 spots	0
Public Bicycle Repair Station	0

- The icons on the left-hand side of the page will allow you to zoom in and out, revert back to the original map extents, zoom to your location (if you are using a GPS-enabled device), search an address, and view the map legend.

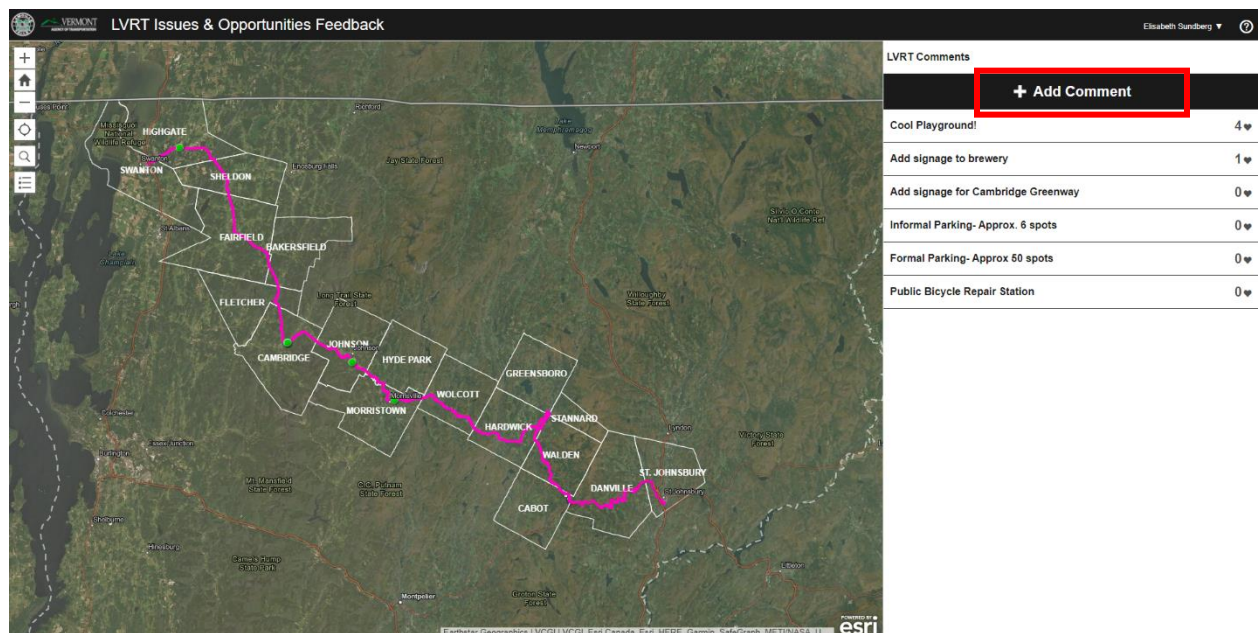


**Zoom In**  
**Map Extents**  
**Zoom Out**  
**Geo Locator**  
**Search for a location**  
**Map Legend**

**LVRT Comments**

**+ Add Comment**

Cool Playground!	4
Add signage to brewery	1
Add signage for Cambridge Greenway	0
Informal Parking- Approx. 6 spots	0
Formal Parking- Approx 50 spots	0
Public Bicycle Repair Station	0



**LVRT Comments**

**+ Add Comment**

Cool Playground!	4
Add signage to brewery	1
Add signage for Cambridge Greenway	0
Informal Parking- Approx. 6 spots	0
Formal Parking- Approx 50 spots	0
Public Bicycle Repair Station	0



4. To add a comment about the LVRT, please select the "+ Add Comment" button.
5. Zoom to your desired location on the map and click to add a comment point or use the "Search Location" option to zoom to a specific address or intersection.

< LVRT Comments

Zoom-in to the section of the LVRT where you would like to make a suggestion or report an issue, then click on the map to add your comment point. Please type your comment below.

Comment (1000 character max.)

Commenter Name (Optional)

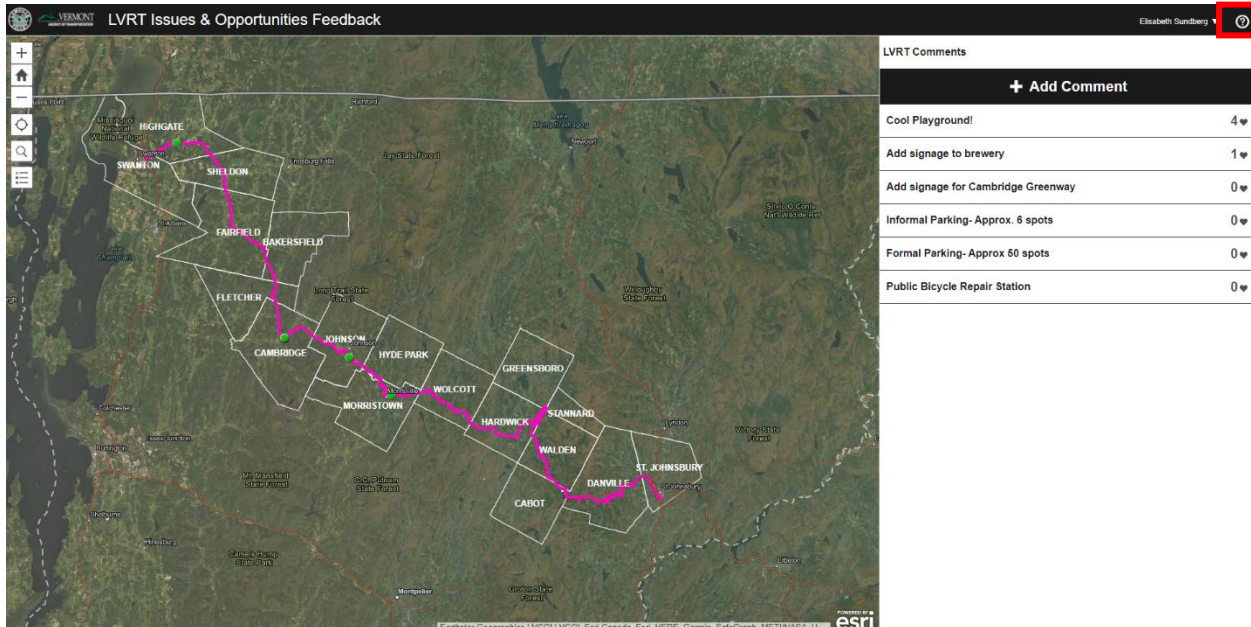
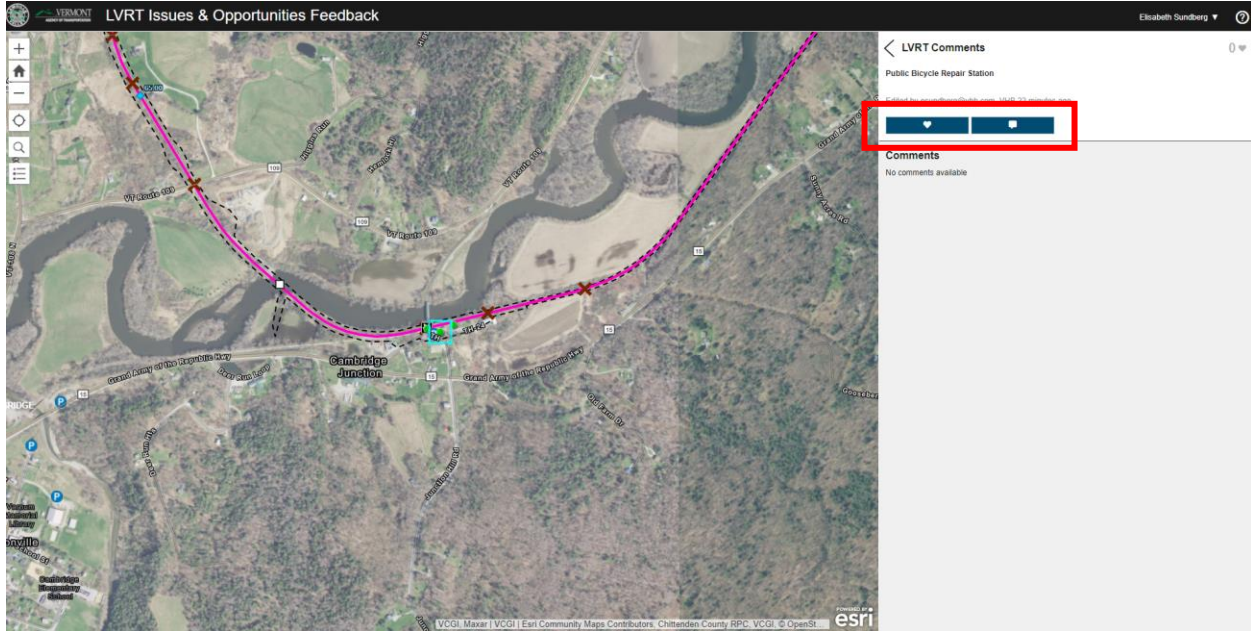
Email Address (If you'd like to be added to the LVRT Project mailing list)

**Search Location**

Click the map to draw the location.

6. Type your comment and include your name and email address if you would like to be added to the LVRT Project mailing list (name and email address are optional).
7. Explore comments added by others listed under the "+Add Comment" button. Selecting a comment from the list or clicking on a green point on the map will bring you to the comment details. Within the comment details, options to like the comment, review others' responses to the comment, and/or add your own response to the comment are available.



- To review the site overview instructions, click the question mark in the top right corner of the page.



9. If you have any other questions about the LVRT or how to use this tool, please contact Elisabeth Sundberg at [esundberg@vhb.com](mailto:esundberg@vhb.com) or (802) 391-5559.