



**Middlebury**  
Bridge & Rail Project

# Public Space Landscape Design Workshop

June 5, 2018



# Introductions







## Project Overview

### Project Dimensions

Overall length: 3,550 feet

Tunnel length: 360 feet

Construction Area: 6.1 Acres





# Middlebury Bridge and Rail Project

- Reconstruction of Main Street and Merchants Row Bridges
- Reconstruction of Railroad Corridor
- Village Green Public Space
- Reconstruction of Printer's Alley Public Space



# Planning Guidance

- Why should we plan our downtown?
- What guides our vision for the future of Middlebury?
- How do the elements of this project fit into the larger community?



# Downtown Middlebury

## ■ Stakeholders

- Residents
- Better Middlebury Partnership
- ACTR
- Neighbors Together
- Middlebury College
- Churches
- Festival on the Green
- Post Office
- Sheldon Museum
- Community Music School
- Ilsley Library
- Chamber of Commerce
- Town Hall Theater
- VTrans



# Downtown Middlebury

## ■ Stakeholders

- Residents
- Better Middlebury Partnership
- ACTR
- Neighbors Together
- Middlebury College
- Churches
- Festival on the Green
- Post Office
- Sheldon Museum
- Community Music School
- Ilsley Library
- Chamber of Commerce
- Town Hall Theater
- VTrans

## ■ Activities

- Capital Budget Projects
- Festivals / Events
- Business Operations
- Delivery of Services
- DIDC Budget Projects
- Infill Development Proposals
- Infrastructure Maintenance
- Grant Applications
- Building Renovations
- Redevelopment
- Emergency Services
- Multi-Modal Transportation





**Planning is needed to optimize land use and bring together downtown stakeholders with community activities**





# Purpose of Planning Documents

- Summarize where we are now
  - Consolidated resource document
  - Historic Context
  - Identifies past studies – Village, Town, MEND
  - Describes existing assets and resources



# Purpose of Planning Documents

- Articulate a vision for where we are going
  - Documents public process
  - Community goals
  - States the community's values and needs
  - Identifies allowable land use
  - Illustrative master plan mapping
  - Guides multi-modal transportation





# Purpose of Planning Documents

- Provides direction for getting there
  - Project prioritization recommendations and costs
  - Recommended future studies and initiatives
  - Site-specific plans
  - Roadmap for future growth and development



# Benefits of Planning

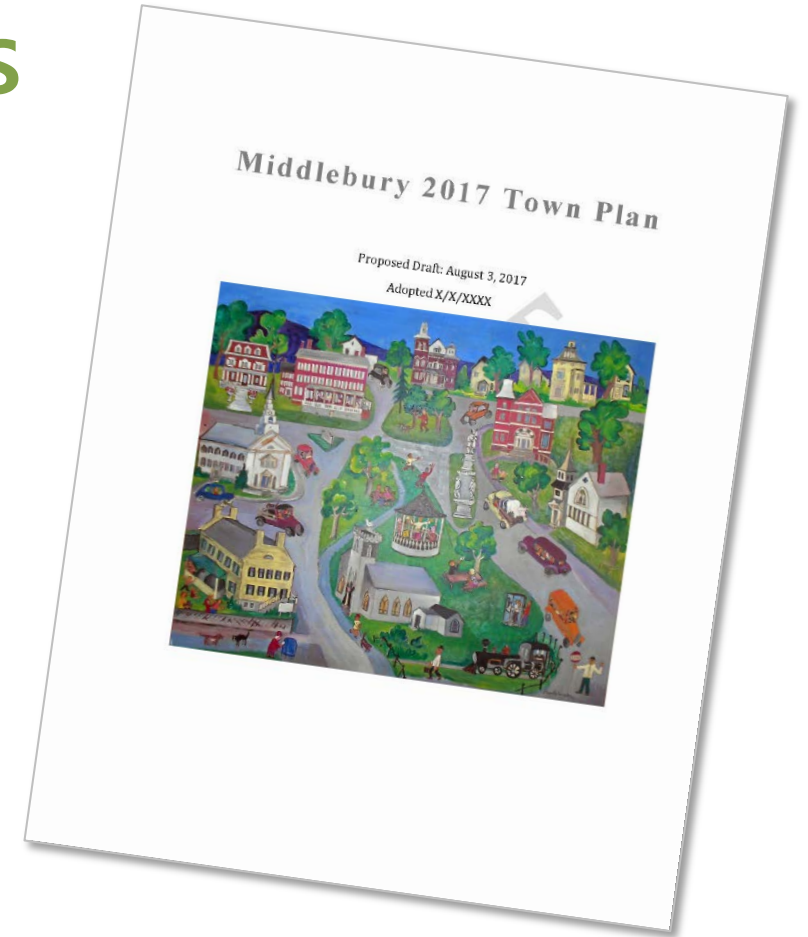
- Public support for projects
- Increased efficiency of decision making
- Reduced conflicts and duplication of efforts
- Better prepared for funding opportunities
- Increased stakeholder collaboration





# Current Planning Documents

- 2018 Addison County Regional Plan
- 2012 Town Plan
- 2017 Town Plan



# Landscape Design Workshop







# Public Spaces Design

- Local and Regional Planning Document Guidance
- Federal Regulations
  - Section 106 of the National Historic Preservation Act
  - Section 4(f) of the US Department of Transportation Act
- Public Input
  - What will make the public space useable?
  - What will attract you to the park areas?



# Public Spaces Design

- Village Green
- Printer's Alley
- Bridge Railings



An aerial photograph of a village green area. A dashed white line outlines a specific plot of land in the center-right of the image. This plot contains a large, dark-roofed building, possibly a church or school, surrounded by trees. To the left of this plot is a street with several cars parked and driving. Further left is a row of buildings with dark roofs. On the far left, there is a body of water with a small waterfall or rapids. The overall scene is a mix of urban and natural elements.

Village Green Area



## Village Green Parameters

- Reconnection of Triangle Park Area to Main Village Green
- Focus on area West of the Church between Main Street and Merchants Row
- Working with Church to address Memorial Garden area







← USE  
CROSSWALK

















## Utility Infrastructure

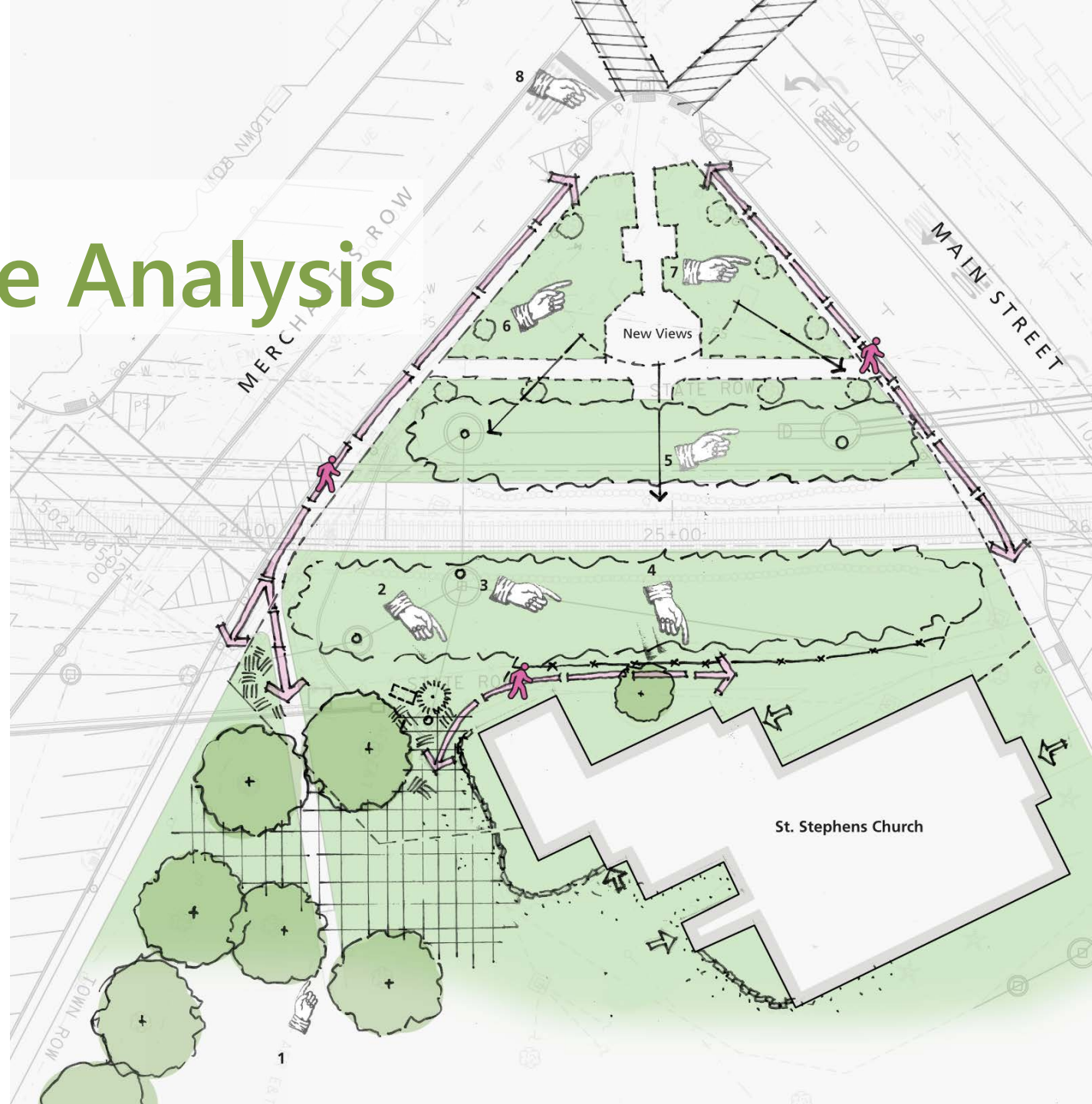
- Need to acknowledge underground systems and sewer/drainage manholes throughout redesign area
- Water valves, hydrant, re-install fountain and hose connection
- Underground irrigation to be installed
- Electric power, transformer and lighting control box





# Village Green Site Analysis

1. Mature trees create shade here
2. Typical rear entry to the church
3. Utility boxes, drainage structures, informal walkway
4. Vegetation will be removed and this area regraded to be flatter
5. Memorial Garden area (working with church here)
6. Vegetation has been removed and this area will be regraded
7. Opportunities for reconfiguration of ground plane
8. Opportunities for new landscape planting plan
9. Current crosswalk configuration to remain

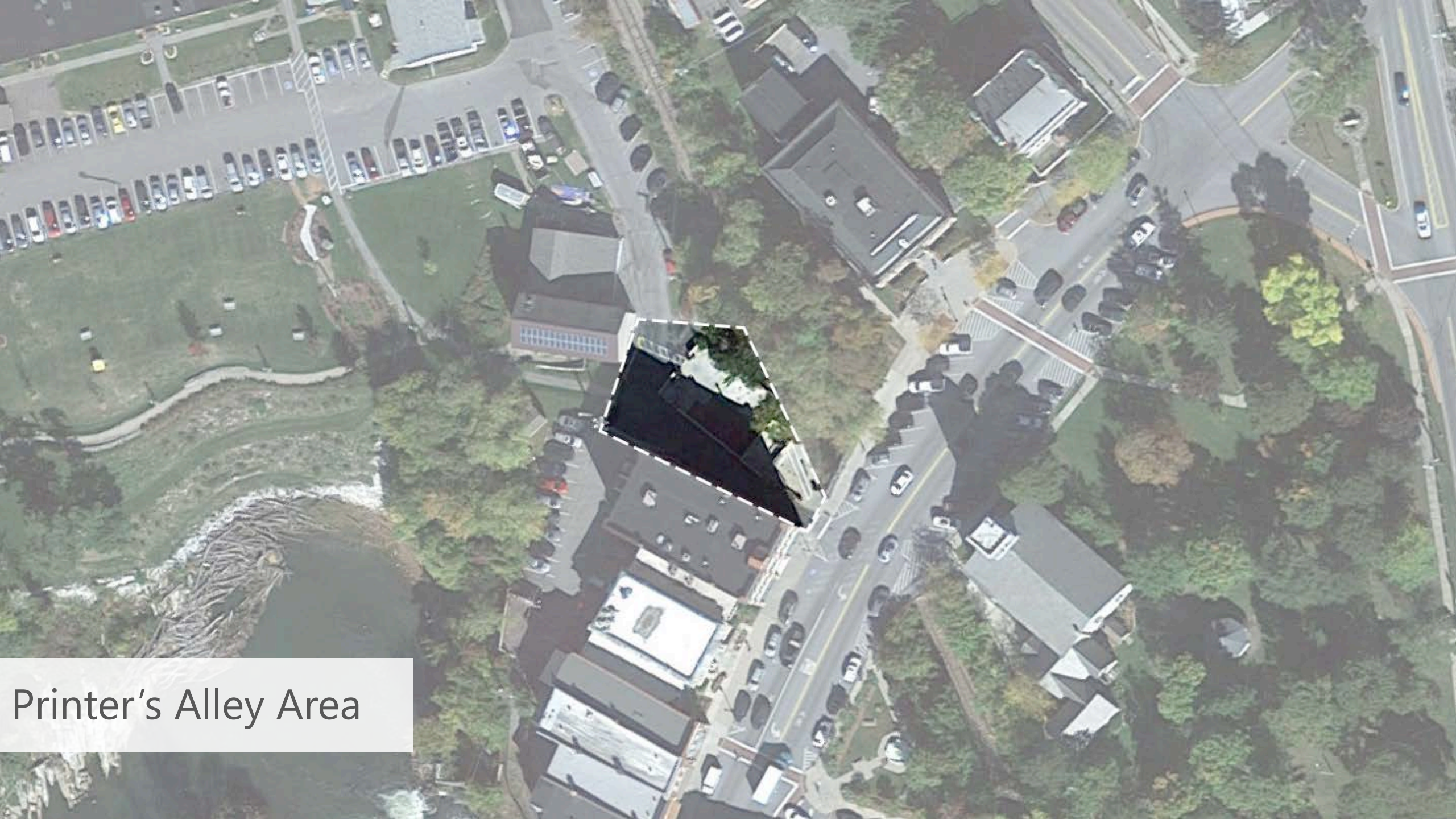




## Village Green - Options to Consider

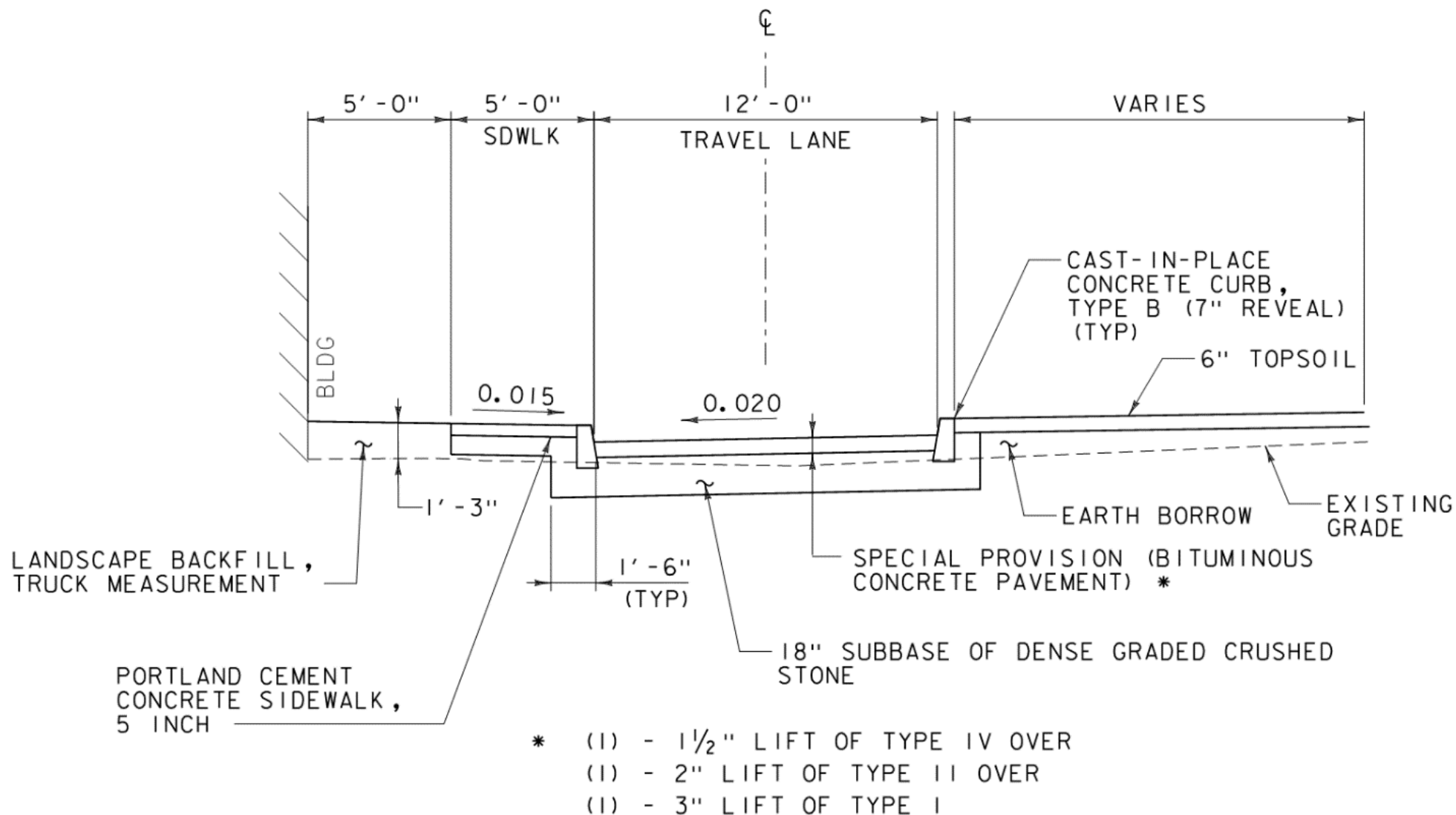
- Re-use of historic Ashlar blocks - sitting walls and other features?
- Location of sidewalks, new plantings (trees, shrubs, groundcovers, benches, etc.)
- Lighting options – low level post-mounted and/or higher intensity pole mounted fixtures?
- Connectivity to existing Green and Main St./Merchants Row





Printer's Alley Area





## PRINTER'S ALLEY SECTION

(STA. 20+35 - 21+56)  
 NOT TO SCALE



## Printer's Alley Parameters

- Reconstructed access road, sidewalk, green spaces
- Pedestrian travel will follow new sidewalk and connect to existing pathway on south side of the Gas House
- Site is sloping; surface grade will drop approximately 11-13 feet from Main St. to area in front of Gas House
- Public space will be accessible at upper and lower levels, but no ramps or accessible pathways are feasible within park site

















## Utility Infrastructure

- Drainage system manhole in center of space
- Potential for electrical service and lighting – low level/post mounted or higher intensity
- Railroad emergence from tunnel – railings/fencing on east side of new public space to be installed





- # Site Analysis
-



## Printer's Alley - Options to Consider

- Re-use of historic Ashlar blocks - sitting walls and other features?
- Public bulletin board/information kiosk?
- Public gathering – wifi hotspot?
- Tree, shrub, and garden design opportunities



# Design Examples for Reference







# Initial Visual Simulation of Green after Tunnel Construction







## Initial Visual Simulation of Green after Tunnel Construction







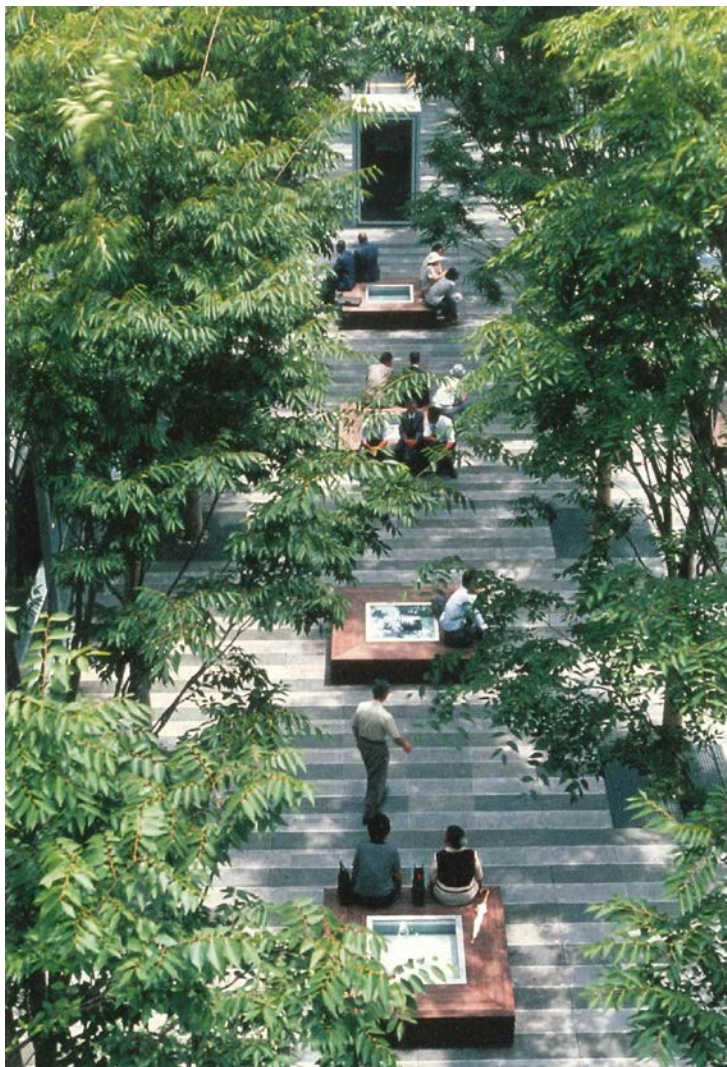
# Landscape / Architecture







# People Places







## Environmental Sculpture / Art





# Workshop Design Session





## Public Input and Ideas

- Consider existing conditions and site parameters
- What should be the focus or key element(s) to be considered?
- What will make the spaces most inviting, attractive, and most enjoyable/usable?
- What is needed downtown public space? What is missing?
- How to make engaging for **all** potential users?





# Think Outside the Box!

- Gathering areas – location and design?
- Public or environmental art/sculptures?
- Activity Space: game tables, exercise areas
- Alternative seating designs: swinging benches, hammocks, stone circles









# Think Outside the Box!

- Opportunities for historic interpretation
- Garden/landscape/ecological design ideas?
- Creative lighting options (Dark Sky compatible)





# Think Outside the Box!

- Cascading site environment? (Printer's Alley)
- Water features?
- Summer and winter use – covered space(s)?
- Space for food vendors?







## Next Steps

- Design Workshop Breakout Groups (tonight)
- Meeting Recap (tonight)
- Data download and preliminary design (June/July)
- Public Meeting Number 2 (mid-July)
- Refined design analysis (July/August)
- Public Meeting Number 3 (end of August)