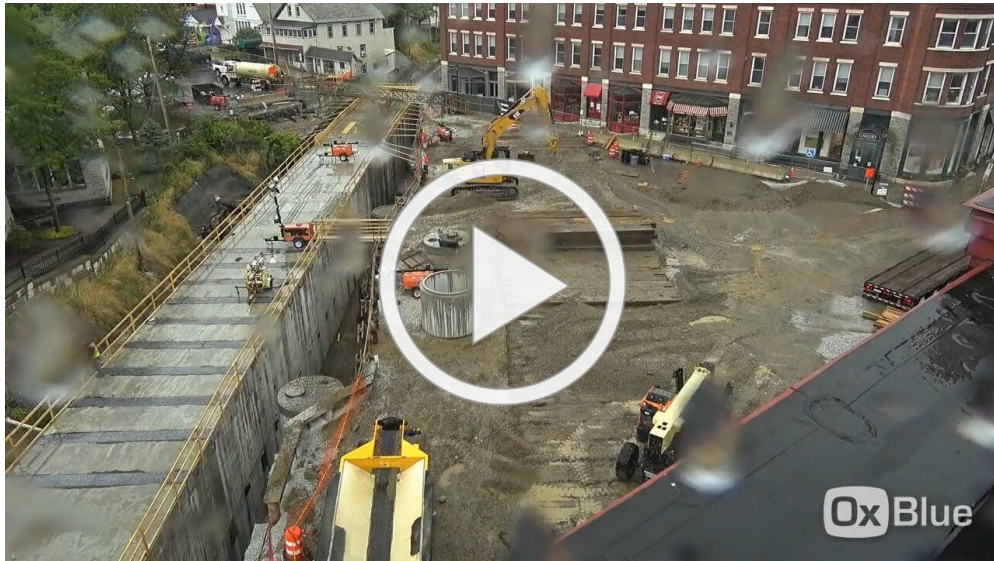


Construction Update

Middlebury Bridge & Rail Project

Construction Update - Week of August 10, 2020



*Check out the project's closed loop time-lapse video!
(This is also posted to the VTrans project website)*

DATE: Friday, August 7, 2020

PROJECT TYPE: Construction of Rail Tunnel

LOCATION: VT Route 30 (Main Street) & Merchants Row, in downtown Middlebury in Addison County, VT

PROJECT DESCRIPTION: The Vermont Agency of Transportation (VTrans), in collaboration with the Town of Middlebury, is replacing two nearly 100 year old rail bridges in the center of Middlebury with a tunnel. The bridges are about 300 feet apart, with one located on Main Street/VT 30 and the other on Merchants Row.

CONSTRUCTION NEXT WEEK

- Good news! We are nearly halfway through the downtown road closure.
- The crews will continue to set 44 pieces of precast u-walls. The 275-ton crane will shift from the Post Office to Seymour Street. The precast will end just south of County Tire.
- Expect continued transport of rail ballast in preparation of restoring the rail tracks. The crews will continue installing the precast retaining wall.

TRAFFIC IMPACTS:

- Beginning Sunday night, there will be single-lane closures of Seymour Street, between Main Street and Elm Street from 7pm to 7am. On Tuesday around 7pm, Seymour Street will be closed overnight to thru traffic.
- Businesses are open. Come enjoy downtown in the summer.
- There is a **temporary ban on left-hand turns** from South Pleasant Street to Cross Street during the 10-week closure.
- Main Street is closed until the third week of September. The closure goes from the south end at Bakery Lane and Mill Street to the north end at North Pleasant Street.
- Merchants Row is closed entirely.
- Printer's Alley is closed to pedestrians.

PLANNED PROJECT COMPLETION: 2021

Ride the Shuttlebury

VTrans and ACTR have partnered to operate a continuous-loop shuttle to move people around downtown. **It's free for riders, and ACTR is diligent about providing a safe and healthy experience, with frequent cleanings.** View the Shuttlebury route map, schedule, and other information [here](#).

Or, call 388-2287 if you're traveling within the downtown area. The Shuttlebury will pick you up. Avoid the heat, humidity, rain, or just cool off on a relaxing ride!



[Project Website](#)

Contact Information:

Name - Shawna Kitzman

Phone - 802-230-7648

Email - skitzman@fhiplan.com



To learn more about VTrans Construction Projects, visit our [projects website](#).